

Connectland

BOITIER EXTERNE USB v2.0 POUR DISQUE DUR 3 1/2" SATA/IDE

USB v2.0 EXTERNAL ENCLOSURE FOR 3 1/2" SATA/IDE HARD DISK



Manuel utilisateur
User's manual





UB4A external enclosure User's manual

Thank you for buying this product which will respond to your storage needs.
Read carefully this manual and keep it in safe place before using this product.

1. Package contents

- 1 IDE-SATA 3½' USB2 external box
- 1 USB cable
- 1 external power supply
- 1 IDE ribbon cable and 1 one power supply connector 4 pins Molex
- 1 SATA cable and 1 SATA power cable
- 1 user's manual
- 1 CD driver for Windows 98SE in the folder **Win98 Driver JM20337**

2. Hard disk technical data

Compatible hard disk: from 10 to 750 Gb in Ultra DMA 66/100/133 Mbps
Compatible hard disk: from 10 to 1.5 Gb in SATA II-300
Temperature range: 10°C - 40°C. Humidity: 8-90%. JMicron 20337 chipset

3. Introduction

Our storage products technologies use the latest technology. Our products have a good quality/price ratio regarding performance, data transmission rate, life span. With this external enclosure, you will be able to install IDE-PATA hard disk or SATA I/II hard disk to backup your precious data.

4. Technical specifications

A. Simple to install and to use

Compatible with Hot plug: allows to unplug the product without rebooting your computer.
Excellent compatibility with most hard disks and most motherboards USB ports.

B. 2 transmission rates: USB V2.0 in High speed up to 480 Mb/s USB V1.1 in Full speed up to 12 Mb/s

C. High capacity: it is compliant with SATA or IDE-PATA hard disks from 10 to 1.5 Gb, even more, to backup high definition photos, valuable data, etc.

D. Compact design to carry everywhere with you

E. Your data can be stored in normal conditions for long periods.

5. Warning

- Only use the delivered power supply. Another power supply adapter with different specifications can damage your enclosure and your hard disk.
- Do not touch the edge of the power supply connector with your computer case
- Before using, check that the interruptor is on position OFF or O. Then connect the power to the external box, and finally connect the power to the mains. Power ON by setting the interruptor on position ON or I.
- USB port supplies to USB peripherals up to 5 V at 500 mA
- Connect the external box directly to your motherboard USB port. If you connect to front USB port, check that it supplies enough power.
- If you want to use the external power supply, power down your computer. Then plug the external power supply of the external box to the mains. Power on your computer, connect the external box to your computer USB port.
- Keep away from water or heat source.
- Use the hard disk according to its temperature range and humidity range.
- The PATA-IDE hard disk has to be set in **Master**.
- Place the external box on stable ground.
- If you plan to not use the external box for a long time, pull out the power connector from the mains

- It is not recommended to use the external box for 24/24 hours.
- Do not power off the external enclosure if you are transferring data or if the LED lights on.
- If you install a 500 Gb hard disk or more, you should power down the external box after hours of continuous use because this kind of hard disk tends to heat.

6. Minimum system required

PC computer with USB v2.0 or v1.1 port with Windows 98SE/ME/2000/XP/VISTA/7
 MACINTOSH computer with MAC OS 9.0 or superior

7. Hardware installation

Remove the 2 fastening screws at the rear of the external box. Keep them in a safe place. Remove the tray from the main body. Fasten the hard disk to the tray. Connect the right cable IDE-PATA or SATA according to your hard disk model on the plate and on the disk drive IDE or SATA connector, with the red pinout n°1 at the edge of IDE cable.

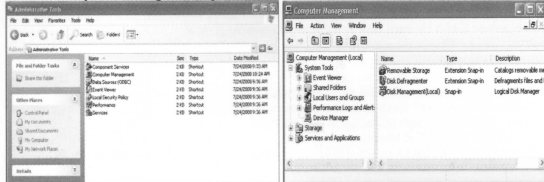
Do not force: a mechanism avoids a wrong insertion of the hard disk on the IDE or SATA cable. It is impossible to mislead. The hard disk has to be set on Master position. Consult the hard disk user's manual. Connect the power supply connector MOLEX 4 pins or SATA according to the HDD model. Fasten the hard disk on the 2 lateral sides with the 4 screws. Insert the tray with the hard disk in the main body. Fix the 2 screws.

8. Driver installation with Windows 7-VISTA-XP-2000-ME-Mac OS

Connect the external enclosure to your computer USB port. Windows 7-VISTA-XP-2000-ME and MAC OS will automatically install the driver and will add a local or removable hard disk associated with a new letter. Otherwise, check if you have formatted the hard disk. Go to the next chapter.

9. Hard disk initialization with Windows 7-VISTA-XP-2000-ME

Go to **Start** in the Control Panel, Switch to **Classic View** under XP, open **Administrative Tools**, Choose **Computer Management**, go to the level **Storage and Disk Management**.

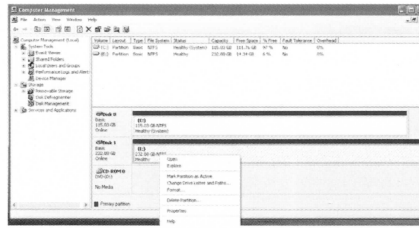


Warning: backup your data before formatting the hard disk.

Wait a while. You will see your main hard disk C by default, your CD/DVD readers/burners, and the hard disk in the external box. Right-click on the hard disk. Choose **Format** the hard disk. It must be **Healthy**, otherwise format it. If it is not active, choose the option **Mark Partition as active**. You can configure the letter of the hard disk.

Once the hard disk has been formatted and activated, you can use it.

Note : by default Windows 7/VISTA/XP/2000 will format in NTFS. If you want to use the hard disk with MAC OS or Windows 98SE/ME, you have to format it in FAT or FAT32.



10. Driver installation with Windows 98SE

Insert the CD driver in your CD/DVD-ROM reader/burner. Connect the external box to your USB port. Windows 98SE will detect a new device: the new external box USB2. Click on **Next**. A new window for adding new device appears. Click on **Next**.



Choose the first option and browse to the folder **D:\Win98 Driver JM20337** then **Next**.

Let Windows install the driver and finish the driver installation. At last click on **Finish**.

Windows 98SE will ask to reboot. Click on **Yes** to reboot your computer.

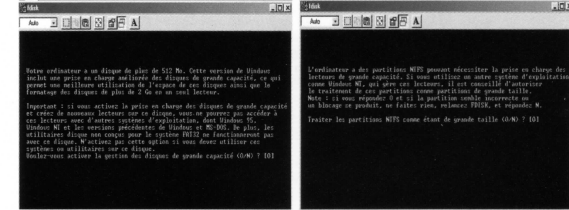
Once you have rebooted, the driver installation is finished

11. Hard disk initialization with Windows 98SE/ME

Once you have initialized the hard disk, you can monitor it in **My Computer** and use it with the **FDISK** utility. After installing the driver and connecting to your computer, in **Run** type **fdisk** then **OK**.

You will have a new window. Type **Y** if your hard disk is over 512 Mo.

If your hard disk is already in NTFS, it will appeared another message, type on **Y** to continue.

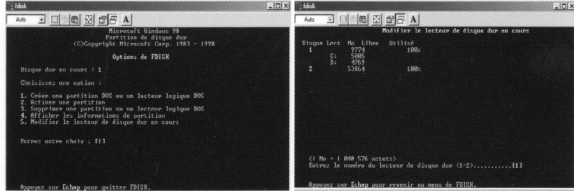


You will enter in the main menu of the fdisk utility.

To create a new partition, type 1.

Once the partition has been created, choose the option 2 to activate the hard disk.

If you have more than one hard disk, choose the right hard disk to create the partition. In this example you have the main hard disk 1 partitioned in 2 : one of 5 Gb and one of 4.7 Gb, and a second hard disk of 53 Gb.



You have to reboot to validate your choices.

After the reboot, there will be a new letter assigned to the hard disk.

If your hard disk is bigger than 160 Gb, download via Internet the free utility SWISSKNIFE to format the hard disk in FAT / FAT 32.

Caution : if you want to use the hard disk with MAC OS, WINDOWS 98SE/Me, you have to format and set the partition in FAT or FAT32.

If you format in NTFS, the hard disk will only be seen with WINDOWS 7-XP-2000-VISTA. You will not be able to see it with WINDOWS 98SE/Me or MAC OS.

12. Safe removal of the external enclosure USB

To remove safely the external enclosure, click on the green arrow below the left taskbar.



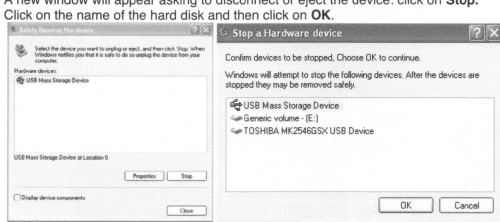
Click on **Safely remove**. In our example it is HITACHI HDS72404.

A window will validate with WINDOWS 98SE the possibility to safely remove the hard disk: click on **OK**. You can pull out the USB cable and power off your computer before unplugging the power adapter from the mains. Click on **Safely Remove Hardware** under Windows 2000/XP/VISTA/7.

If you cannot manage to safely remove, close My computer, all windows and all applications. Then click again on **Safely remove**.

A new window will appear asking to disconnect or eject the device: click on **Stop**.

Click on the name of the hard disk and then click on **OK**.



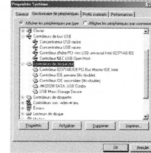
A window will validate under WINDOWS 2000-ME-XP-7 the possibility to safely disconnect the external enclosure. Click on **OK**. You can unplug the USB cable from the computer and shut down the external box before removing the power cord.

If you pull out the external enclosure or unplug its power adapter cord, you can have some trouble through a warning message which can lead to a computer crash and the loss of your precious data under Windows 98/SE/ME.

If you disconnect brutally the external box, you might have a computer crash and lose your data. Moreover, the electronic parts of the external box may be subjected to overload peaks which can lower its life span.

13. FAQ

- The external box will not work with Windows 95 and NT4.0 as they can't support USB norm.
- You can not see the hard disk in **My Computer**. Check the USB cable connection, that you have plugged in the power adapter. Check that your USB drivers are updated, that your system is updated. Check in your motherboard BIOS (by triggering the key DEL at the boot sequence) that the option **Advanced Chipset Features** or **Integrated peripherals** at the level **Onchip USB** or **USB Keyboard support** or **Legacy USB support** is in position **Enabled**. It depends on your motherboard: ask the manual. Once the update has been made, type on **Save and Exit** : save and type **OK** pour validate the modifications.
- When you power on the external box, one LED (in green colour) lights on constantly : it means that the external box is running and is powered. If you transfer data or files, another LED (in red colour) will flash, and will stop when the transfer is over.
- If you can not see the hard disk under Windows 98SE/ME or MAC, the hard disk has been formatted in NTFS : you will have to format in FAT, but save your data before formatting. If your hard disk is bigger than 80 Gb, you have to use Windows ME fdisk utility or download the free utility SWISS KNIFE to be able to format. Otherwise, go to **Start, Control Panel, Switch to Classic View, System, Hardware, Device Manager, Disk Drives**: choose the name of your hard disk. Right click, then choose **Properties**: in the properties window go to **Parameter**: check that **Disconnection** is unchecked, that the button **Removal** is checked. You can choose the letter assigned to the hard disk. Reboot.
- If your IDE hard disk is old, if you had put it on **Master** and that you still can not see it in **Disk Management**, put it in position **CS** or **Slave**. Check if the hard disk works by connecting it directly to IDE cable to your motherboard.
- If your SATA hard disk is not recognized, try to put it on SATA 150 mode. Check if it works correctly by connecting directly to the SATA port or check if it is formatted.
- Check that you have the correct ribbon cable and power cable for hard disks IDE-PATA and SATA: no error risk as they have different plugs.
- Ask for help to your reseller
- Driver checking
Check under WIN 98/SE/ME in **Control Panel, System, Hardware, Device Manager, Universal Serial Bus Controllers** if there are the terms **JM20338 SATA,USB Combo** or **USB Mass Storage Device**. Otherwise if there is a question mark or an exclamation mark, check if the USB cable is correctly connected or if the hard disk is formatted. Check under WIN 2000/XP in **Start, Control Panel, Switch to Classic View, System, Hardware, Device Manager, Universal Serial Bus Controllers** that there are the terms **JM20338 SATA,USB Combo** or **USB Mass Storage Device**. Otherwise if there is a question mark or an exclamation mark, check if the USB cable is correctly connected or if the hard disk is formatted. Check under WINDOWS VISTA in go to **Start, Control Panel, Switch to Classic View, Device Manager, Universal Serial Bus Controllers** if there are the terms **JM20338 SATA,USB Combo** or **USB Mass Storage Device**. Otherwise if there is a question mark or an exclamation mark, check if the USB cable is correctly connected or if the hard disk is formatted.



Windows 98SE / ME



Windows 7 / VISTA / XP / 2000

Manipulate carefully the external enclosure. If you drop it, the hard disk and the external enclosure might be defective.