

USER MANUAL

XCEL™ ACTION CAMERAS



XCEL HD



XCEL HD2



THANK YOU FOR CHOOSING A XCEL PRODUCT.

This manual will guide you through all the features of your device so that you will get optimal use out of your product.

Our priority is to provide outstanding customer service. If you need support for your product, please contact the XCEL technical service or visit our website.

CONTACT

 1-888-779-7646

 tech@xcelcam.com

 xcelcam.com


JOIN THE XCEL COMMUNITY

 FACEBOOK.COM/XCELCAM

 YOUTUBE.COM/XCELCAM

 VIMEO.COM/XCELCAM

ABOUT US

 For 10 years, GG Telecom, makers of XCEL products and SPYPOINT surveillance cameras, has the mission to offer products that are easy to use, innovative, affordable and of exceptional quality. We promote family values and the involvement of our employees in all stages of development, manufacturing and product promotion. Our priority is to provide outstanding multilingual customer service.

Prosperous and respected, GG Telecom is a company that keeps abreast of new technologies and listens to its customers. Our XCEL products are constantly being developed. Our research and development team works tirelessly to offer high performance action cameras and a full range of innovative accessories that will follow you everywhere and let you capture your best moments.

More than a dozen accessories are included with the XCEL camera. Just install your camera to discover a world of possibilities.

XCEL | Show your skills

Table of contents

Package contents	4	Regulation (XCEL HD)	25
Components	5	Limited warranty	26
Getting started	6	Repair service	26
Installation of the accessories included	7		
Operation modes	8		
Configuration modes	11		
Operation of the LED lights and screen depending on selected options	12		
Remote control			
XCEL HD	14		
XCEL HD2.....	15		
Charging the battery	17		
Memory card	18		
Transferring files to a computer	18		
Maintenance of the camera	19		
Troubleshooting	20		
Error messages	20		
Available accessories	21		
Specifications			
XCEL HD	23		
XCEL HD2.....	24		

Package contents

ACCESSORIES INCLUDED:



Camera with slide adaptor (XCEL HD)



1 button remote control (XCEL HD)



Camera with slide adaptor (XCEL HD2)



2-way remote control (XCEL HD2)



Quick release stands with safety ring (2)



Lithium-ion Polymer battery



HDMI and USB cables



Lens protector



Carrying case



Wrist strap



Lens cleaning cloth



XCEL stickers (3)

MOUNTING ACCESSORIES INCLUDED:



HUNTING EDITION



Camo waterproof housing



Bow mount



Scope mount



Head strap mount



SPORT EDITION



Clear waterproof housing



360° Roll bar mount



Straight and 90° extender



Curved adhesive mount



Flat adhesive mount

Components

FRONT VIEW



BOTTOM VIEW



Getting started

INSERTING THE MICROSD CARD

Insert a microSD memory card in the card slot, gold contacts facing up. The card is inserted correctly when a click is heard.



REMOVING THE MICROSD CARD

Lightly press the memory card into the camera once to pop it out of the slot and remove it.

Note: The camera is compatible with microSD memory cards with capacity up to 32 GB, class 4 or higher (not included). See AVAILABLE ACCESSORIES section (p.22).

BATTERY INSTALLATION

Unlock the battery compartment cover by moving the lock button to the right and remove the cover.




Insert the lithium-ion polymer battery (included) into the battery compartment.




Note: The battery included with the camera is partially charged. It is possible to use the camera as is, but for best results, recharge the battery (see CHARGING THE BATTERY section p.17).

TURNING ON THE CAMERA


To turn on the camera, press and hold the  button a few seconds until the welcome screen appears.



To turn off the camera, press and hold the  button a few seconds until the shutdown screen appears.



BUTTON FUNCTION

1. : ON-OFF/ START-STOP
 2. M: Changes mode/ Next
 3. OK: Confirm entries/ Zoom (+)*
 4. BACK: Exit the menu/ Previous/ Zoom (-)*
- *XCEL HD2 only

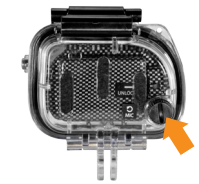


USING THE CAMERA WITH THE WATERPROOF HOUSING (XHD-OHT or XHD-OHC)

Insert the camera into the housing and close it tightly. The housing can then be installed on any mount compatible with XCEL action cameras. It protects the camera and allows to use for underwater use. The housing is waterproof up to 160 ft. (image: camera with XHD-OHT housing)



An access screw for the microphone is located at the back of the housing. Remove the screw completely to improve sound recording. Note that the housing **is no longer waterproof** if the screw is loosened or removed, the water will infiltrate into the housing.



USING THE CAMERA WITHOUT THE WATERPROOF HOUSING

To use the camera without the housing, it is necessary to use the slide adaptor. This allows you to attach the camera on any mount compatible with XCEL action cameras. Install the slide adaptor by sliding it in the anchorage system located under the camera.



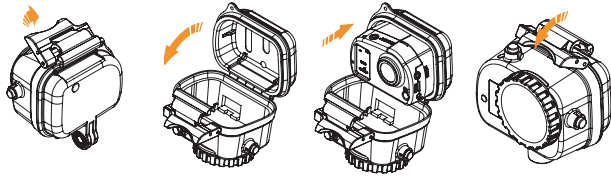
To remove the slide adaptor from the camera, press the ends and slide the adaptor toward the back of the camera.



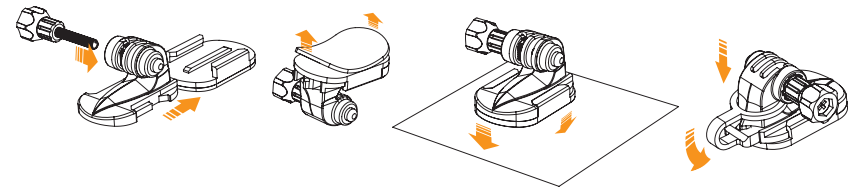
Note: The slide adaptor has been designed to attach securely and adequately to the anchorage system of the camera and resist to activities with impact.

Installation of the accessories included

WATERPROOF HOUSING

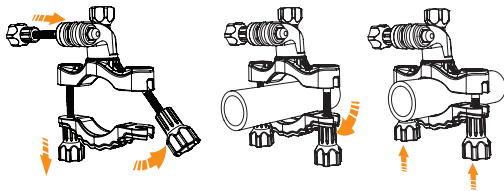


QUICK RELEASE STAND WITH SAFETY RING

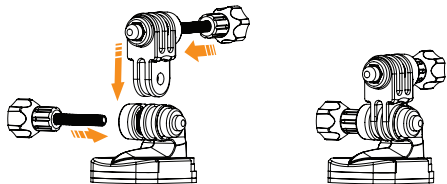


SPORT EDITION

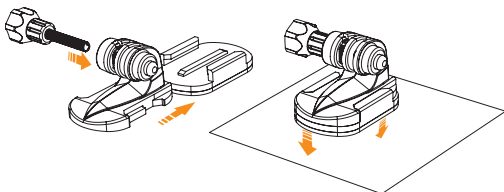
360° ROLL BAR MOUNT



90° & STRAIGHT EXTENDERS

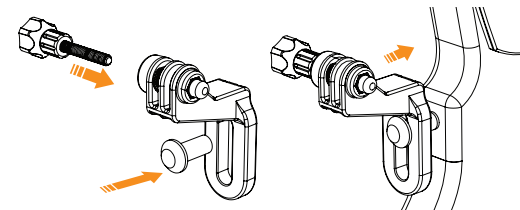


CURVED & FLAT ADHESIVE MOUNTS

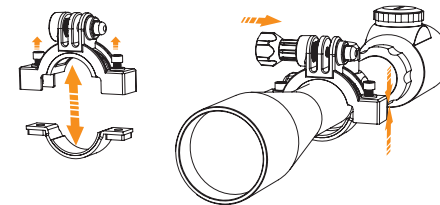


HUNTING EDITION

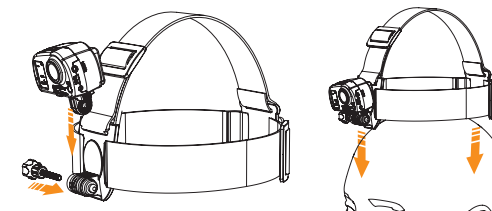
BOW MOUNT



SCOPE MOUNT








HEAD STRAP MOUNT



Operation modes

DESCRIPTION OF ICONS

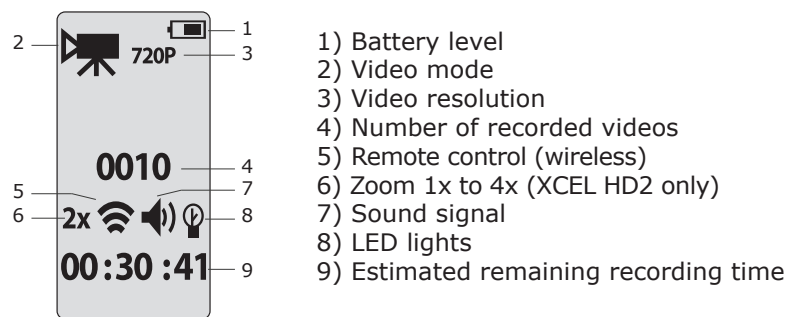
Turn on the device and switch from one mode to another by pressing the M button. It is possible to see on the configuration screen 5 different modes.



	VIDEO	HD video recording (480p, 720p or 1080p)
	PHOTO	Taking photos <ul style="list-style-type: none"> XCEL HD: 1mp, 3mp or 5 mp XCEL HD2: 5mp, 8mp or 12mp 1 to 6 consecutive photos
	TIME LAPSE	Taking photos at predefined regular intervals (0.5, 2, 5, 10, 30 or 60 seconds)
	VIEW	<ul style="list-style-type: none"> Allows the user to see the number of recorded files. Allows the user to view photos and videos when the camera is connected to a television using the HDMI cable.
	SETTINGS	Allows the user to set the advanced settings of the camera.

See CONFIGURATION MODES section (p.11) for more details.

VIDEO MODE

- Allows the user to see the current configuration of the VIDEO mode.



- To start recording a video, press the  button. The camera beeps if the sound signal option is enabled. The recording time is displayed on the screen and the LED lights flash while recording. See OPERATION OF THE LED LIGHTS AND SCREEN DEPENDING ON SELECTED OPTIONS section (p.12).
- To increase the zoom (XCEL HD2 only), press OK and to decrease, press BACK. Refer to the subject distance table in the REMOTE CONTROL section (p.15) to find which zoom level to use. The zoom adjustment can be done while recording a video.
- To stop recording, press the  button. The camera beeps if the sound signal option is enabled. The remaining recording time on the memory card will reappear on the screen.

When the microSD card is full, the camera automatically stops recording and the current video will be saved.

When the battery is empty, the camera automatically stops recording and the current video will be saved before the camera turns off.

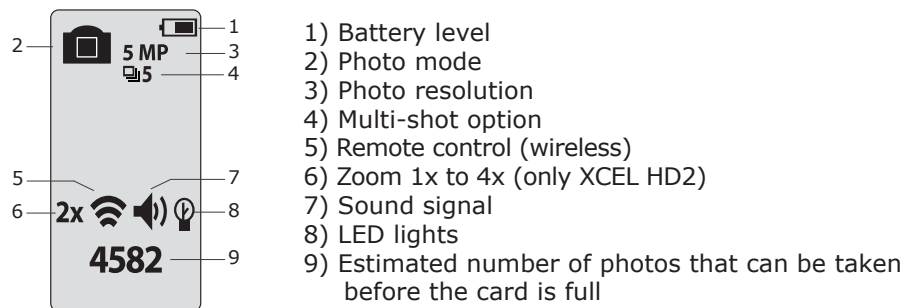
It is possible to record a video with a maximum duration of approximately 45 minutes (3.66 GB) for the XCEL HD and approximately 30 minutes (3.66 GB) for the XCEL HD2. When this maximum is reached, the camera stops recording and automatically starts a new video. The first video will be identified XCEL0001 and the second XC010001.

Note: It is possible to take videos with the camera installed upside down. The camera automatically displays the video in the right direction when viewing on a computer or a TV. To do this, the camera must be installed upside down **before** recording the video.

Operation modes

PHOTO MODE

- Allows the user to see the current configuration of the PHOTO mode.

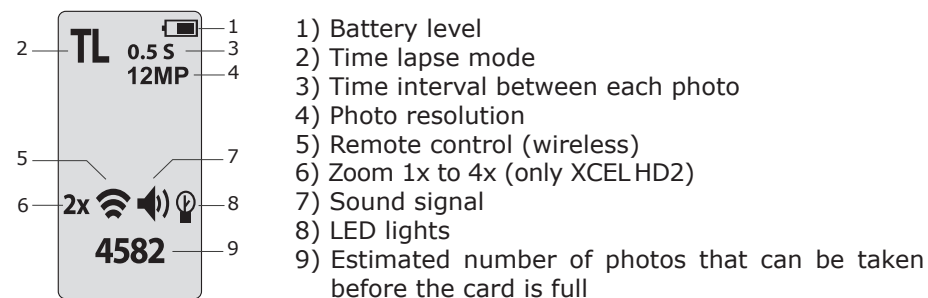


- To take a photo, press the button. The camera beeps if the sound signal option is enabled and the LED lights flash to indicate that a photo was taken. See OPERATION OF THE LED LIGHTS AND SCREEN DEPENDING ON SELECTED OPTIONS (p.12).
- To increase the zoom (XCEL HD2 only), press OK and to decrease, press BACK. Refer to the subject distance table in the REMOTE CONTROL section (p.15) to find which zoom level to use.

TL TIME LAPSE MODE

The TIME LAPSE mode allows to take photos at predefined regular intervals.

- Allows you to see the current configuration of the TIME LAPSE mode.



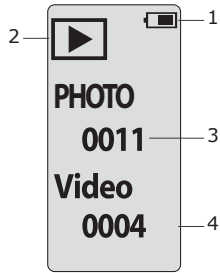
- To start taking photos, press the button. The camera beeps if the sound signal option is enabled and the LED lights flash to indicate that photos are being taken. See OPERATION OF THE LED LIGHTS AND SCREEN DEPENDING ON SELECTED OPTIONS section (p.12).
- To increase the zoom (only XCEL HD2), press OK and to decrease, press BACK. Refer to the subject distance table in the REMOTE CONTROL section (p.15) to find which zoom level to use.
- To stop taking photos, press the button.

Note: This option allows the user to obtain photos of fast moving subjects.

Operation modes

▶ VIEW MODE

- Allows the user to see the number of recorded files and view videos/photos when the camera is connected to a television.



- 1) Battery level
- 2) VIEW mode
- 3) Number of recorded photos
- 4) Number of recorded videos

VIEWING ON A TELEVISION

Allows the user to view videos and photos directly on a television.

- 1) Connect the HDMI cable (included) to the HDMI port of the TV and to the camera.



- 2) Turn on the camera by pressing the button.
- 3) Navigate on the interface to VIEW mode by pressing the M button.
- 4) Select the VIEW mode by pressing the OK button. The last video or photo recorded will appear on the TV screen. To pass from one video (or photo) to another, use the BACK and buttons. To view a video, press OK.

To fast forward a video, press BACK (x2/x4/x8) and to rewind the video, press (x2/x4/x8) .

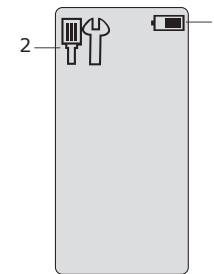
Note: When the camera is connected to a television, it is also possible to take videos and photos and access the settings menu. Navigate on the interface to the desired mode by pressing the M button. See the respective section of each mode for the use of the buttons.

Here is the information displayed on the television screen depending on the mode selected (VIDEO, PHOTO or TIME LAPSE).

MODE	INFORMATIONS
VIDEO	Mode icon, video resolution, battery level and remaining recording time.
PHOTO	Mode icon, photo resolution, battery level and number of photos that can be taken before the card is full.
TIME LAPSE	Mode icon, photo resolution, battery level and number of photos that can be taken before the card is full.

SETTINGS

- Allows the user to see the battery level and access the settings menu by pressing the OK button.



- 1) Battery level
- 2) Settings



Configuration modes

Allows the user to set the camera options.

Navigating in the menu:

- The M button to move among the choices
- The OK button to select an option
- The BACK button to return to the previous menu



Video mode

Allows the user to record video in the following resolutions:

Resolution	Field of view	Screen resolution	Advantage
480p	Wide angle	848 x 480	Greater length of recording
720p	Ultra wide angle	1280 x 720	Largest field of view
XCEL HD ▶ 1080p XCEL HD2 ▶ 1080p	Wide angle Ultra wide angle	1920 x 1080 1280 x 720	The highest resolution



Photo mode (including the Multi-shot mode)

1. Allows the user to take photos in the following resolutions:
XCEL HD: 1mp, 3mp or 5 mp
XCEL HD2: 5mp, 8mp or 12mp
Changing this setting also affects photos taken in TIME LAPSE mode.
2. The Multi-shot mode allows the user to take 1 to 6 consecutive photos with every shot with a delay of approximately 0,5 seconds between each photo.



TIME LAPSE mode

Allows the user to take photos at regular predefined intervals:
0,5, 2, 5, 10, 30, 60 seconds.



Date/Time

Allows the user to set the date (Year/Month/Day) and time (hour/minute). Use the OK button to confirm the entry and use the M and BACK button to adjust the digits.

Note: When the camera is not powered for approximately 48 hours, it is possible that the date and time reset. So always verify the date and time before using the camera when this occurs.



Remote control

Allows the user to remotely control the camera (Wireless mode).



Wireless activated. The reaction time between the camera and the remote control can take a few seconds but gives a better battery life. See note at page 13.



(XCEL HD2 only) Wireless activated in "Quick React" mode. The reaction time between the camera and the remote control is instantaneous. By cons, this option requires more energy consumption and lifetime of the battery will be affected.



Wireless deactivated.



Sound signal

Enable or disable the sound of the camera when using the buttons.



DEL lights

Enable or disable the LEDs lights. When the Remote control and LED lights options are activated, the 4 LEDs flash slowly to indicate that the camera is waiting for the signal from the remote control and flash rapidly during record videos/photos. See OPERATION OF THE LED LIGHTS AND SCREEN DEPENDING ON SELECTED OPTIONS section for more details (12).
























Erase

Allows the user to erase the last file or all files.

Configuration modes


OPERATION OF THE LED LIGHTS AND SCREEN DEPENDING ON SELECTED OPTIONS

REMOTE CONTROL OPTION	DEL LIGHTS OPTION	OPERATION OF THE LED LIGHTS AND SCREEN BEFORE RECORDING VIDEOS/PHOTOS	OPERATION OF THE LED LIGHTS AND SCREEN WHEN RECORDING VIDEOS/PHOTOS
ENABLED  and 	Enabled 	<ul style="list-style-type: none"> The 4 LED lights flash every 2 seconds to indicate that the camera is waiting for the signal from the remote control (when the video, photo or time lapse mode is shown on the screen). The screen turns off after 1 minute of inactivity (ENERGY SAVING). To return to the screen, press the OK button.  	<p>Video/ Time lapse</p> <ul style="list-style-type: none"> The 4 LED lights flash rapidly. The screen turns off after 5 seconds (ENERGY SAVING).  
	Disabled 	<p>Video/ Time lapse</p> <ul style="list-style-type: none"> The LED on the back flashes every 2 seconds to indicate that the camera is waiting for the signal from the remote control (when the video, photo or time lapse mode is shown on the screen). The screen turns off after 1 minute of inactivity (ENERGY SAVING). To return to the screen, press the OK button.  	<p>Video/ Time lapse</p> <ul style="list-style-type: none"> The LED light on the back flashes rapidly. The screen turns off after 5 seconds. (ENERGY SAVING).  
		<p>Photo</p> <ul style="list-style-type: none"> The LED light on the back flash twice. 	
	DISABLED 	Enabled 	<ul style="list-style-type: none"> The camera turns off after 2 minutes of inactivity (AUTO SHUT DOWN). 
Disabled 		<p>Video/ Time lapse</p> <ul style="list-style-type: none"> The camera turns off after 2 minutes of inactivity (AUTO SHUT DOWN). 	<p>Video/ Time lapse</p> <ul style="list-style-type: none"> The LED light on the back flashes rapidly. The screen turns off after 5 seconds (ENERGY SAVING).  
		<p>Photo</p> <ul style="list-style-type: none"> The LED light on the back flash twice. 	



*See note on next page p.13



Configuration modes

Note: When the remote control option is enabled (wireless mode [] ON), the camera goes into sleep after 2 minutes of inactivity to maximize battery life.

To wake the camera from sleep, do one of the following actions:

1. Press the RECORD button on the remote control (.
2. Hold down the ON-OFF button on the camera for 3 seconds (.

Remote control • XCEL HD



When the camera is on and the REMOTE CONTROL option is enabled, the remote control allows you to take videos and photos in the mode shown on the screen by pressing the START/STOP button. Wireless range up to 40".

SYNCHRONIZATION

The remote control synchronizes automatically when the START/STOP button is used to take a video or photo. It is also possible to use only one remote control to control multiple cameras.

Examples:

- When only one camera is on, the remote control automatically synchronises to this camera when the START/STOP button is used to take a video or photo.
- If multiple cameras are on, the remote control automatically synchronizes to each camera when the START/STOP button is used to take a video or photo. This means that the remote control will start recording or taking photos simultaneously on each of these cameras.

LITHIUM BUTTON BATTERY

The remote control must be powered by 2 lithium button batteries CR2032. Insert the batteries in the indicated direction, the polarity of the battery must be respected (+ upwards). DO NOT DISPOSE OF BATTERIES IN THE GARBAGE.



ATTACHING THE REMOTE CONTROL

To attach the remote control using the Velcro strap (included), just insert the Velcro strap into the slots on each side of the back of the remote.



RECOMMENDATIONS



Do not submerge the remote control in the water.

Remote control • XCEL HD2



When the camera is on and the REMOTE CONTROL option is enabled, the remote control allows the user to take videos and photos in the mode shown on the screen. It is also possible to enlarge the image up to 4x (720p and 480p only). The XCEL HD2 remote control is water resistant up to 16".

REMOTE CONTROL UTILIZATION

M Button	Allows the user to change the recording mode (Video, photo or Time Lapse).	
● Button	Allows the user to start and stop the video and photo recording. When a video or photo recording is started, the «REC ●» message will appear on the remote's screen a few seconds and when the recording stops, the () icon will appear on the screen for a few seconds.	
1x 4x Button	The zoom option enlarges the image up to 4x. The camera remembers the last zoom used. To properly adjust the zoom, see the following table:	
	Zoom	Subject distance (approximate)
	1X	Up to 50 ft
	2X	Up to 100 ft
	3X	Up to 150 ft
	4X	Up to 200 ft
🔒 Button	Hold to lock or unlock the keypad on the remote control.	

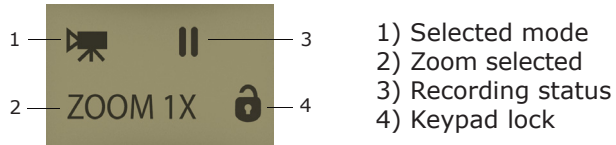
Note: During a change of mode or zoom, the camera screen will be updated only when the recording starts.



Remote control • XCEL HD2

SCREEN

To access to the screen, press any button except the start/stop the video and photo recording (●). The screen turns off after 10 seconds in order to preserve battery life.



REMOTE CONTROL SYNCHRONIZATION

It is necessary to synchronize the remote control with the camera at the first use following the instructions below:

1. Verify that the remote control is off.
2. Turning on the camera.
3. Simultaneously press the **M** and **🔒** buttons on the remote control until the wireless signal icon (sync) appears.

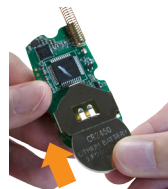


4. When the synchronization is complete, the wireless icon (OK) will appear on the screen.



LITHIUM BUTTON BATTERY

The remote control must be powered by a lithium button battery CR2450. Insert the battery in the indicated direction, the polarity of the battery must be respected (+ upwards). Replacing the battery does not affect the last synchronization performed with the camera. **DO NOT DISPOSE OF BATTERIES IN THE GARBAGE.**



ATTACHING THE REMOTE CONTROL

To attach the remote control using the Velcro strap (included), just insert the Velcro strap into the slots on each side of the back of the remote.



Charging the battery

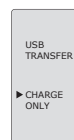
The battery level is shown in the upper right corner of the screen in all camera modes. When the battery level is low, we strongly suggest to charge the battery before it is empty. If a video is being recorded and the battery level reaches 0%, the camera saves the file before shutting down.

TO CHARGE THE BATTERY:

1. Using the USB cable included, connect the camera to a USB power source:

- a computer
- a car charger XHD-CUSB (sold separately p.21)

- a booster pack
- a USB adaptor XHD-A (sold separately p.21)



2. Select "CHARGE ONLY" with the M button and press the OK button.

3. The battery icon displays the loading progress until the battery is fully charged. We strongly suggest disabling the REMOTE CONTROL option to maximize the charging time.

When the battery is empty, the charging time is about 5 hours for the battery to be fully charged. Replacement batteries are also available (XHD-BATT, sold separately p.21).

CAUTION: When charging the battery, the camera may become very hot if it is plugged in for many hours.

It is also possible to charge the battery by removing it from the camera and using the dual battery charger (XHD-CHG, sold separately p.21).

BATTERY LIFE

When the battery of the camera is fully charged, it is possible to record about 2 hours to 2.5 hours, depending of the different videos resolutions.

Video resolution	Video recording hours
720p @ 30 fps (XCEL HD)	2h30
720p @ 60 fps (XCEL HD2)	1h50
1080p @ 30 fps	2h
480p @ 60 fps	2h15

Note: The video duration is affected when the REMOTE CONTROL option is enabled.

USING THE CAMERA DURING THE CHARGING OF THE BATTERY

While charging, it is possible to take videos and photos and access the setup menu. In addition, the VIEW mode can be used if the camera is also connected to a TV using the HDMI cable.

To use the VIEW mode, connect the camera to a TV using the HDMI cable. See the respective section of this mode to use the buttons.



Memory card/ Transferring files to a computer

MEMORY CARD

Using a memory card is required to record videos and photos. The camera is compatible with microSD memory card, up to 32 GB capacity (Class 4 or higher). Sold separately, see AVAILABLE ACCESSORIES section (p.22).

Before inserting or removing a card, turn off the camera to prevent damage to the files.

The screen displays "no card" when there is no SD card in the camera and "Card Full" when it is full. In addition, when the memory card is full, the screen displays "0000" in PHOTO and TIMELAPSE mode and "00:00:00" in VIDEO mode for the remaining number of photos and the remaining video recording time. If a video is being recorded, the camera automatically stops recording and the video will be saved.

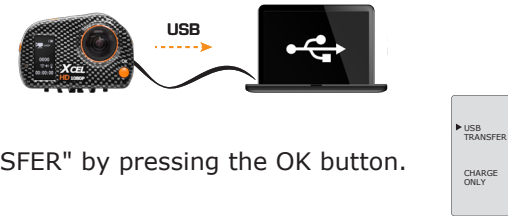
The following data shows the approximate quantity of photos or video length that can be taken by the camera depending on the memory card capacity.

	16 GB	32 GB
Photo		
1 MP	50900	101800
3 MP	15100	30200
5 MP (XCEL ^{MC} HD)	9400	18800
5 MP (XCEL ^{MC} HD2)	6500	13000
8 MP	4950	9900
12 MP	3900	7800
Video		
480p @ 60 fps	5h45	11h15
720p @ 30 fps (XCEL HD)	4h45	9h45
720p @ 60 fps (XCEL HD2)	1h55	3h50
1080p @ 30 fps	3h45	7h30

TRANSFERRING FILES TO A COMPUTER

Allows to transfer or to view videos/photos using a computer.

1. Connecting the camera to a computer using the USB cable included.



2. Select "USB TRANSFER" by pressing the OK button.
3. The USB icon appears on the screen to indicate that the file transfer is in progress and the battery icon appears on the top right of the screen to indicate the battery is charging.
4. The computer will recognize the camera and install the driver automatically. Click on "My Computer" and select "Removable Disk". Then click on "DCIM" and "100MEDIA" in order to find the videos and photos stored.
5. Drag or save the files to the desired location.

Taking the memory card out of the camera and inserting it into the computer slot will achieve the same results (a SD adapter may be required).

Note: Videos in .MP4 format require the use of a compatible video player software such as VLC, Windows Media Player or QuickTime.

Maintenance of the camera

CLEANING THE LENS

Install the lens protector (included) on the lens of the camera when it is used without the waterproof housing. To clean the lens, use an air blower to remove dirt such as dust or sand. Then gently wipe the lens tissue (included) on the lens.

CLEANING THE CAMERA

Gently wipe the camera with a soft, dry cloth. DO NOT use thinners or other cleaners to clean the camera, these products can cause damage.

CLEANING THE WATERPROOF HOUSING

It is important that the rubber gasket is always clean to ensure a perfect seal. Rinse the housing in fresh water and shake it to dry. Do not use a cloth to dry the seal, as lint may settle there and compromise the effectiveness of it. After the use of the housing in salt water, rinse it in fresh water and dry it. The salt can build up on the seal and the buttons may rust.


Note: It is important to follow these tips, because the warranty does not cover any GG Telecom products which has been subjected to water damage due to user error.

WARNINGS

- Never place the camera or the battery inside or above a heating device such as a microwave oven, a stove or a radiator. This could lead to overheating or the deformity of materials, or even cause a fire or explosion.
- Protect the lens from fingerprints and scratches using the lens protector or waterproof housing.
- Do not expose the memory card to extreme temperatures (below -20 °C or above 50 °C). This may cause the memory cards to malfunction.
- Insert the memory card in the correct direction, otherwise it may damage the camera and the memory card.
- Do not bend, drop or subject the memory card to shock or pressure.
- Do not put the memory card into contact with liquids, dust or foreign bodies. If the memory card is dirty, clean with a soft cloth before you insert it into the camera.
- Do not place the camera on flammable surfaces such as bedding, blankets, carpets, or electric blankets for extended periods.
- Use only replacement lithium-ion battery XHD-BATT (sold separately, see AVAILABLE ACCESSORIES section p.21).
- Cold temperatures can affect battery life.
- If the camera is not used for an extended period, remove the battery. The battery may leak or corrode over time and cause serious damage to the camera.

Troubleshooting/ Error messages

TROUBLESHOOTING

Problem	Possible solutions
Impossible to turn on the camera	<ul style="list-style-type: none"> • Verify if there is a battery in the camera. • Charge the battery (p.17).
Impossible to turn on the remote control	<ul style="list-style-type: none"> • Change the batteries (p.14/16).
The screen of the camera turns off (ENERGY SAVING)	<ul style="list-style-type: none"> • The screen turns off in order to preserve the battery while still recording. To return to the screen, press the OK button.
The camera turns off	<ul style="list-style-type: none"> • Charge the battery (p.17). • When the remote control option is disabled, the camera turns off after 2 minutes of inactivity. Press and hold the  button a few seconds to turn on the camera.
The camera does not respond	<ul style="list-style-type: none"> • Remove the battery and reinstall it (p.6).
Impossible to take videos/photos	<ul style="list-style-type: none"> • Verify if there is a battery in the camera. • Charge the battery (p.17). • Memory card is full (p.18). • Verify if the camera is turned on (p.6).
The remote control does not communicate with the XCEL HD camera	<ul style="list-style-type: none"> • Respect the maximum wireless range (40 ft) between the camera and the remote control. • Change the battery in the remote control (p.14).
The remote control does not communicate with the XCEL HD2 camera	<ul style="list-style-type: none"> • Turn off the camera (p.6). • Turn on the camera and make a new synchronization (p.16). • Respect the maximum wireless range (40 ft) between the camera and the remote control. • Change the battery in the remote control (p.16).
The camera heats	<ul style="list-style-type: none"> • It is possible that the camera warms up during extended use. (Heat sink located under the camera p.5) This is normal and does not affect the life or performance of the camera.

The housing fogs	<ul style="list-style-type: none"> • Use anti-fog inserts, sold separately (see AVAILABLE ACCESSORIES section p.22) • Apply an anti-drip solution on the lens of the housing to prevent fogging when using the camera in the rain or underwater.
The videos/photos do not appear on the television	<ul style="list-style-type: none"> • Verify if the camera is correctly connected to the television using the HDMI cable (p.10). • Verify if the memory card contains videos/photos.
The computer does not recognize the camera	<ul style="list-style-type: none"> • Verify if the camera is properly connected to the computer using the USB cable (p.18). • Verify that camera is turned on (p.6).
The computer can't play videos	<ul style="list-style-type: none"> • The .MP4 video format requires the use of a video playback software compatible such as VLC, Windows Media Player or QuickTime.

ERROR MESSAGES

Error message	Possible solutions
no card	<ul style="list-style-type: none"> • There is no memory card in the camera. The use of a memory card is required to record video and photos (p.18).
card full	<ul style="list-style-type: none"> • The memory card is full. Delete the files or use a new memory card.
SD error	<p>The camera can not access the memory card.</p> <ul style="list-style-type: none"> • Turn off the camera and turn it on again (p.6). • Remove the memory card and insert it again. (p.6) • Verify if the gold contacts are not dirty. • Format the memory card (p.11).

Available accessories

To obtain more information on the available accessories, go to xcelcam.com. Here are the accessories available for the XCEL cameras.

KITS



XHD-HUNTACC
Hunting accessories



XHD-SPORTACC
Sport accessories

POWER



XHD-A
USB power adaptor



XHD-BATT
Lithium-ion polymer battery + cover



XHD-CHG
Dual battery charger



XHD-CUSB
Dual USB car charger

MOUNTING ACCESSORIES



XHD-BJM
Ball joint mount and low quick release stand kit



XHD-CM
Cap mount



XHD-DM
Decoy mount



XHD-DOG
Dog mount



XHD-NVG
NVG helmet mount



XHD-PM
Pole mount



XHD-SGM
Shotgun mount



XHD-SM
Suction mount



XHD-SSM
Sling stud mount



XHD-TPM
Tripod mount



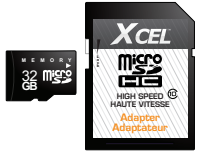
XHD-VHM
Vented helmet mount



MA-360
Camera mount

Available accessories

MEMORY



MICROSD
16GB/32GB

PROTECTION AND OTHERS ACCESSORIES



XHD-FOG
Anti-fog inserts



XHD-LP
Lens protector



XHD-MIC
External
microphone



XHD-OHC
Camo waterproof
housing



XHD-OHT
Clear waterproof
housing



XHD-TL
Tether leash

Specifications • XCEL HD

Video recording

Video resolution	1080p/30ips 720p/30ips 480p/60ips
File format	.MP4, codec H.264

Photo Recording

Photo resolution	1, 3, 5 MP
File format	JPG
Time Lapse option	Predefined intervals from 0.5 to 60s

Lens

Optical field of view	<ul style="list-style-type: none"> • Ultra wide angle 720p • Wide angle 480p, 1080p
-----------------------	---

Audio

Sound recording	Stereo, MPEG AAC codec
Microphone input	2.5 mm input for external microphone (optional)

Memory storage

Support	<ul style="list-style-type: none"> • Internal memory: none • External memory: microSD card, up to 32 GB, class 4 or higher (not included)
---------	---

Viewing

TV output	Micro-HDMI
Computer output	Micro-USB

Power source

Lithium-ion polymer battery	Rechargeable lithium-ion polymer battery
-----------------------------	--

Dimensions

2.4" W x 1.7" H x 1.6" D

Weight

2.9 oz (camera with battery)
5.7 oz (camera with battery and housing)

Remote control

Starts or stops the videos and photos recording up to 40 ft with the remote control.

Recommendations

Operating temperature	(-4 °F to +104 °F) (-20 °C to + 40 °C)
Storage temperature	(+59 °F to +77 °F) (+15 °C to + 25 °C)

Specifications • XCEL HD2

Video recording

Video resolution	1080p/30ips 720p/60ips 480p/60ips
File format	.MP4, codec H.264

Photo Recording

Photo resolution	5, 8, 12 MP
File format	JPG
Time Lapse option	Predefined intervals from 0.5 to 60s

Lens

Optical field of view	<ul style="list-style-type: none"> • Ultra wide angle 720p, 1080p • Wide angle 480p
Zoom	1x to 4x

Low light image sensor

Audio

Sound recording	Stereo, MPEG AAC codec
Microphone input	2.5 mm input for external microphone (optional)

Memory storage

Support	<ul style="list-style-type: none"> • Internal memory: no • External memory: microSD card, up to 32 GB, class 4 or higher (not included)
---------	---

Viewing

TV output	Micro-HDMI
Computer output	Micro-USB

Power source

Lithium-ion polymer battery	Rechargeable lithium-ion polymer battery
-----------------------------	--

Dimensions

2.4" W x 1.7" H x 1.6" D

Weight

2.9 oz (camera with battery)
5.7 oz (camera with battery and housing)

Remote control

Select the recording mode to take videos/photos. Enlarge the image up to 4X (720p/480p).

Recommendations

Operating temperature	(-4 °F to +104 °F) (-20 °C to + 40 °C)
Storage temperature	(+59 °F to +77 °F) (+15 °C to + 25 °C)

Regulation

FCC AND IC REGULATIONS

FCC Part 15

FC This equipment has been tested and found to comply with the limits for a Class B digital device, pursuant to Part 15 of the Federal Communications Commission (FCC) rules. These limits are designed to provide reasonable protection against harmful interference in a residential installation. This equipment generates, uses and can radiate radio frequency energy and, if not installed and used in accordance with the instructions, may cause harmful interference to radio communications. However, there is no guarantee that interference will not occur in a particular installation. If this equipment does cause harmful interference to radio or television reception, which can be determined by turning the equipment off and on, the user is encouraged to try to correct the interference by one or more of the following measures:

- Reorient or relocate the receiving antenna.
- Increase the separation between the equipment and receiver.
- Connect the equipment into an outlet on a circuit different from that to which the receiver is connected.
- Consult the dealer or an experienced radio/TV technician for help.

Changes or modifications to this equipment not expressly approved by the party responsible for compliance could void the user's authority to operate the equipment. This device complies with Part 15 of the FCC rules. Operation is subject to the following two conditions: (1) this device may not cause harmful interference, and (2) this device must accept any interference received, including interference that may cause undesired operation.

Industry Canada

This device complies with Industry Canada licence-exempt RSS standard(s): Operation is subject to the following Two conditions: (1) this device may not cause interference, and (2) this device must accept any interference, including interference that may cause undesired operation of the device. The term "IC: " before the certification/registration number only signifies that the Industry Canada technical specifications were met. This product meets the applicable Industry Canada technical specifications.

CE Hereby, GG Telecom declares that this camera is in compliance with the essential requirements and other relevant provisions of Directive 1999/5/EC. The user can obtain a copy of the Declaration of Conformity by e-mail at info@xcelcam.com.

RoHS 

Limited warranty and repair

This XCEL product designed by GG Telecom, is covered by a one (1) year warranty on material and workmanship starting from the original date of purchase. The sales receipt is your proof of purchase and must be presented if warranty service is needed. This warranty will be honored in the country of purchase only.

This warranty does not cover any GG Telecom product which has been subjected to misuse, neglect and accidents or has been improperly used or maintained. In addition, this warranty is not applicable for all products purchased online from an unauthorized dealer. Any modification or tampering of the product will affect its operation, performance, durability and voids this warranty.

INSTRUCTIONS FOR REPAIR SERVICE

GG Telecom will repair the product without charge or replace it at its discretion with an equivalent product, if it has a manufacturing defect covered by the warranty described previously. We will pay the shipping costs only for the return of the products covered by the warranty. The shipping costs for an item sent to us will be assumed by the customer.

Repairs for damages not covered by the warranty will be subject to a reasonable charge. The customer will pay all shipping costs.

- 1. BEFORE** sending a product for repair, please contact our technical support team at 1-888-779-7646 or tech@xcelcam.com. Clearly describe the problem and give a phone number where we can reach you. It happens regularly that some problems can be solved over the phone.
- 2.** If a product needs to be sent, an RMA number will be given to the customer (Return Merchandise Authorization).
- 3.** Prepare a package for GG Telecom and include the original receipt or a copy.
- 4.** Write the RMA number on the outside of the package and send it to:

CANADA
GG Telecom
120 J.Aurèle-Roux
Victoriaville, QC
G6T 0N5

United States
GG Telecom
555 VT route 78
Swanton, Vermont
05488

IMPORTANT: Under no circumstances will GG Telecom accept returned products without a Return Material Authorization number (RMA). It is essential to contact us before making a return.

The customer is liable for loss or damage to the product that may occur during the transport to GG Telecom. We recommend you to use a traceable method of shipping to ensure your protection.

► WWW.XCELCAM.COM