



ORBIT

The logo for 'ORBIT' features a black circle on the left containing a white Wi-Fi symbol. To its right, the word 'ORBIT' is written in a tall, thin, black, sans-serif font.

USER MANUAL

TABLE OF CONTENTS

1.0 What is ORBIT?

Explanation Of The Product..... Pg. 2

2.0 Contents & Compatibility

2.1 What's Included Pg. 3

2.2 Installing/Replacing The Battery Pg. 3

2.3 Mobile Device Compatibility Pg. 3

3.0 Getting Started

3.1 Signing up with the App..... Pg. 4

3.2 How to Connect Orbit to Your Phone Pg. 5

3.3 How to Rename Orbit Pg. 5

3.4 How to Disconnect Orbit..... Pg. 6

3.5 How to add Multiple Orbits Pg. 6

4.0 How to Use Orbit

4.1 How to Locate Orbit Pg. 7

4.2 How to Locate Your Phone Pg. 7

4.3 How to Take A Selfie With Pg. 8

4.4 Advanced Settings..... Pg. 8

5.0 SUPPORT Pg. 9

6.0 SPECIFICATIONS

6.1 Battery Pg. 10

6.2 Compatibility Pg. 10

6.3 Life Pg. 10

6.4 Size Pg. 10

6.5 Water Resistance Pg. 10

6.6 Environmental Conditions Pg. 10

6.7 Return Policy and Warranty Pg. 10

6.8 Disposal and Recycling Pg. 10

7.0 IMPORTANT SAFETY WARNINGS

7.1 General Precautions Pg. 11

7.2 Child Safety Pg. 11

7.3 Safety Precautions Pg. 11

8.0 REGULATORY NOTICES

8.1 North America..... Pg. 12

8.2 European Union Pg. 12

8.3 Asia Pg. 12

What is Orbit?

Orbit is an anodised aluminium Bluetooth device, with an easy-to-use app that finds everyday items in seconds - like your keys, glasses, and wallet. Via the free app, you can check the map for your Orbit's last known location and time. You can also find your phone with Orbit. Press Orbit to make your phone ring - even when it's silent. With Orbit, you can take selfies. No need for a selfie stick, all you need to do is set your smartphone camera where you want it and with a click of the Orbit button you can take selfies to your hearts content.

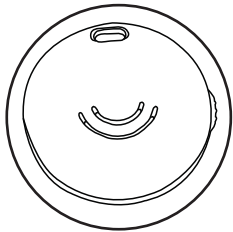
Simple steps to finding your Orbit or phone!

When your most treasured item have gone missing follow these tips to help find them!

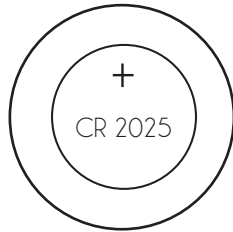
Orbit casts a signal across a 100-foot radius. To start searching for an item, select the item from the Orbit app home screen and tap the orange "find" button., when you start searching for an item, your phone tracks the signal strength of your Orbit. Orbit's distinctive melody will play until your lost item is back in safe hands. The app automatically records the last place your phone registers Orbit.

Contents and Compatibility

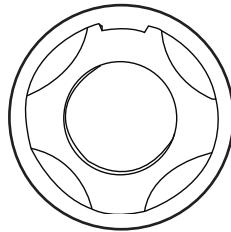
What's Included



ORBIT



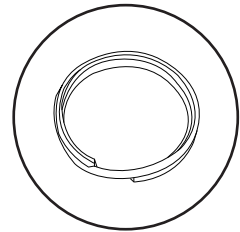
Spare Battery



2x Battery Tool

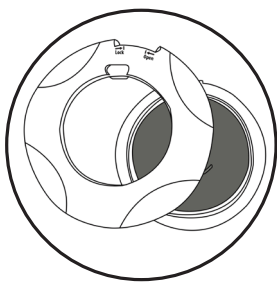


Keychain

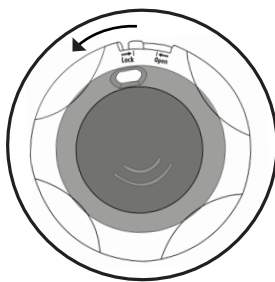


Keyring

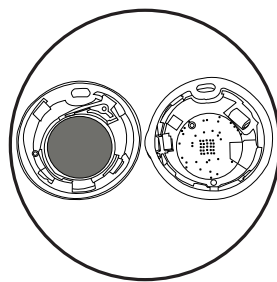
Installing/Replacing the Battery



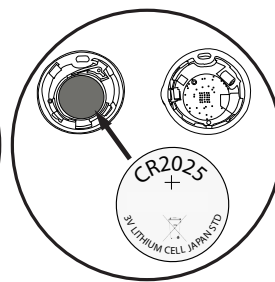
1. Battery is included inside. To replace the battery, enclose the Orbit in between the 2 battery opening tools.



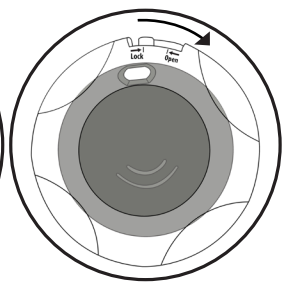
2. Twist the top battery tool anti-clockwise to open.



3. Open the Orbit and detach old battery from inside.



4. Place the new battery with the (+) symbol facing down.



5. Push the top and bottom Orbit shell together. Place the Orbit in between the opening tool. Twist clockwise to lock Orbit close.

Mobile Device Compatibility

ORBIT syncs with the following devices that support Bluetooth 4.0:

iOS

iPhone 4S
iPhone 5
iPhone 5C
iPhone 5S
iPhone 6
iPhone 6+

iPad 3
iPad Retina
iPad Mini
iPad Mini Retina

Android

Samsung s4
Samsung s5
Samsung s6
Samsung Note 3
Samsung Note 4
Nexus 4
Nexus 5
Nexus 6
HTC One M8
LG G3
LG G4

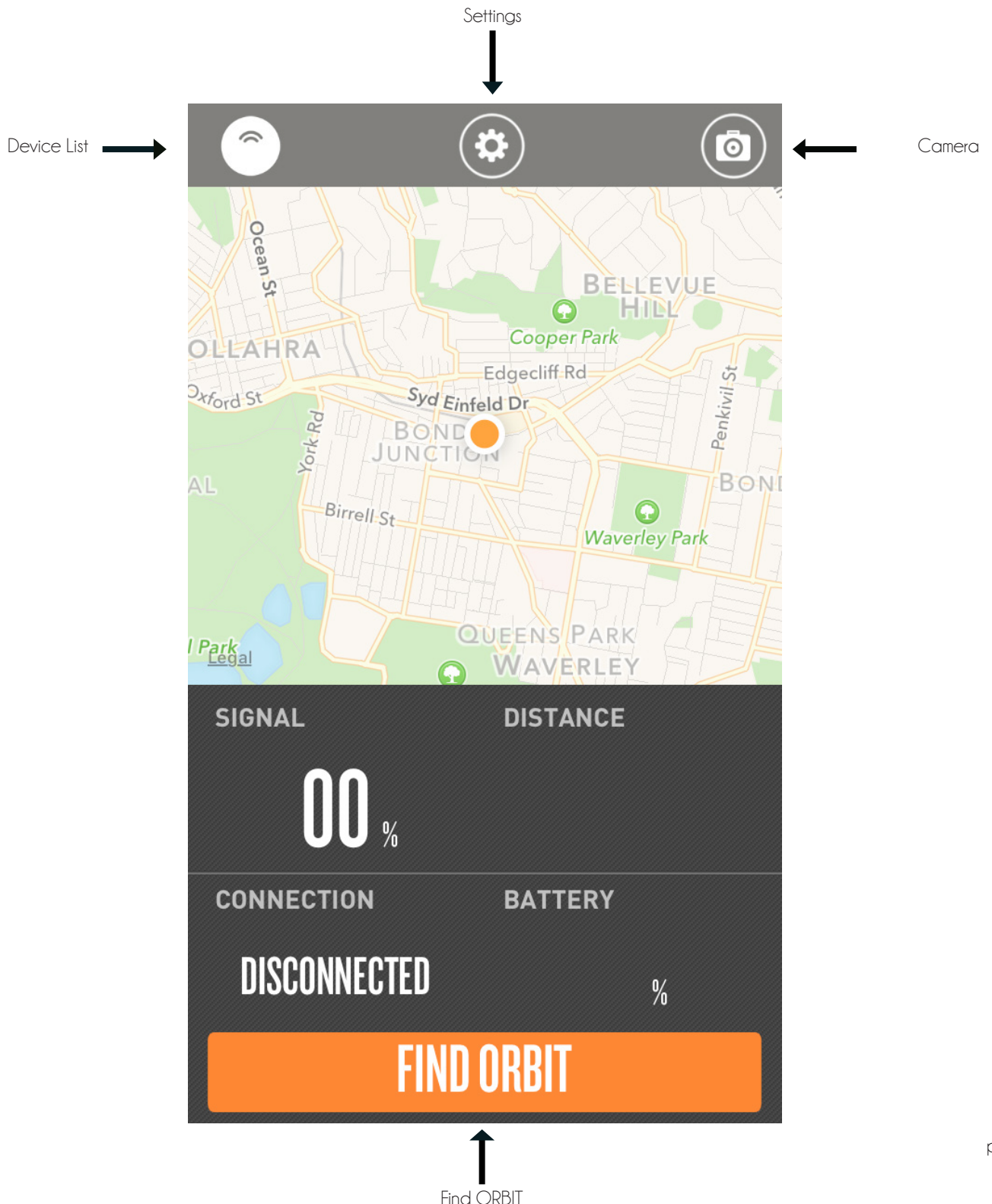
Getting Started

Downloading the App

Install the ORBIT app by downloading “ORBIT - Find your keys, Find your phone, Take a selfie” on the App Store or Google Play.



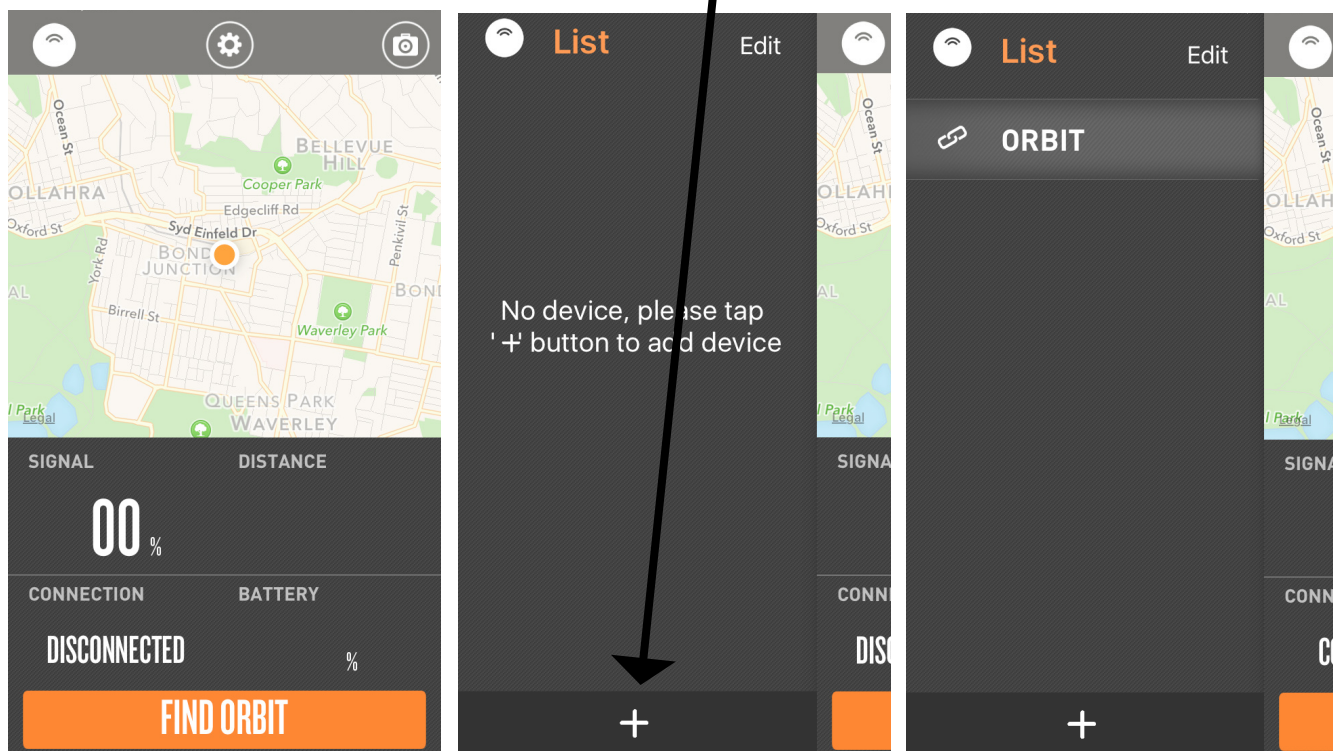
Open the app, and allow for the app to find your location. Please ensure bluetooth is turned on for the app to connect to ORBIT.



How to Connect your ORBIT to your Phone

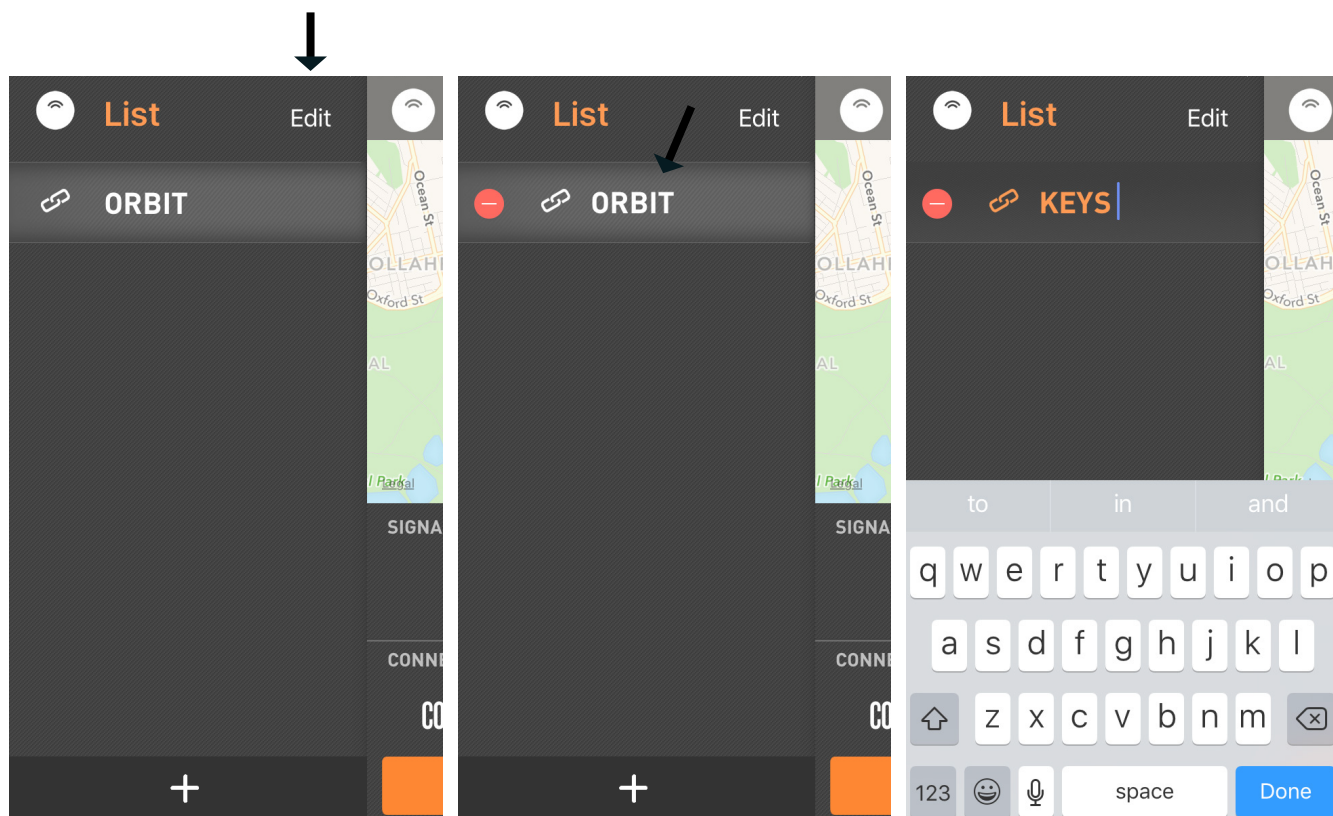
To activate your Orbit, hold down the side button for 5 seconds.

1. Tap on the top left icon (image of the orbit device).
Press the side button on ORBIT so it can be searched.
2. Tap on the (+) icon to add device.
"ORBIT device" will appear in the list.



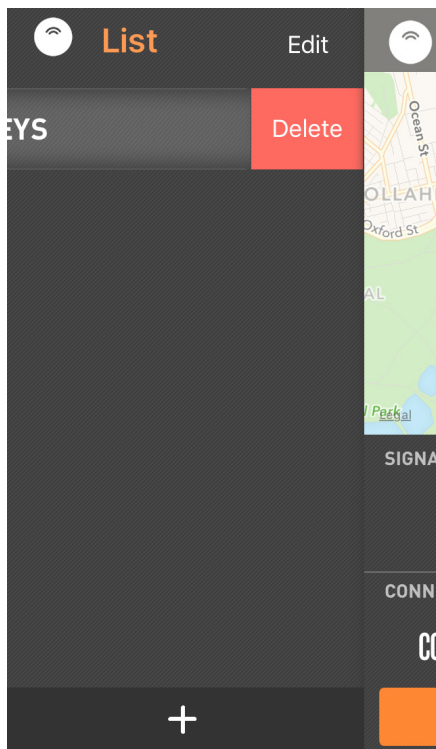
How to Rename ORBIT

1. Tap on the top right "Edit" button.
2. Tap on the name of the device and rename.



How to Disconnect ORBIT

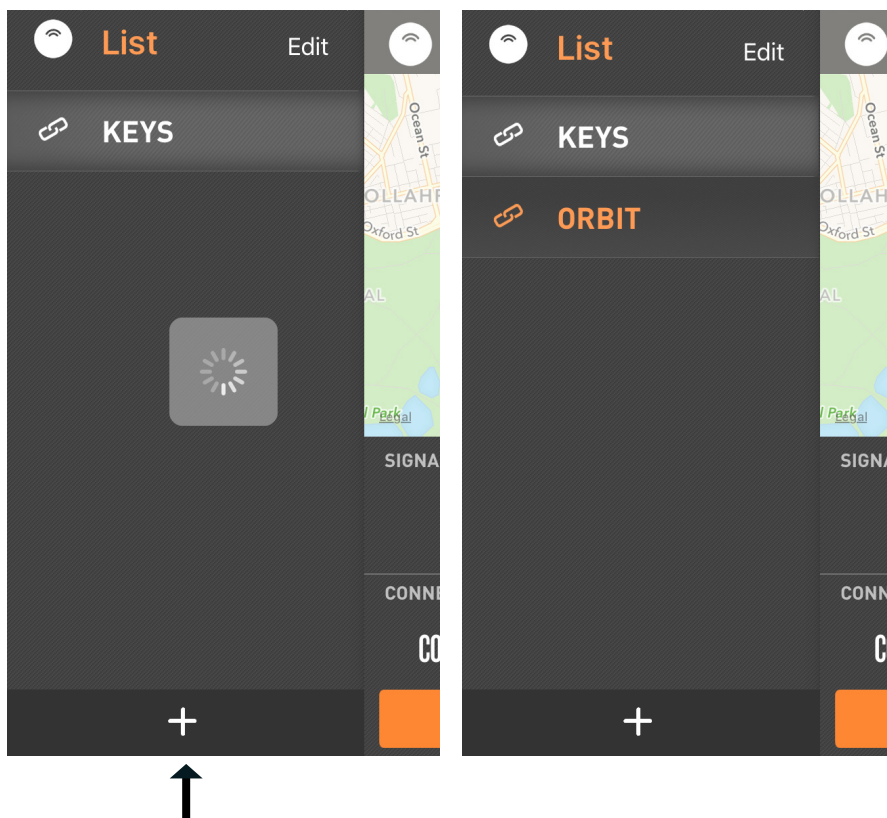
1. Tap on the Name of your Orbit.
2. Swipe right on the name and the Delete box will appear.



How to add Multiple ORBITs

1. Tap on the (+) icon to add another device.
The Orbit app will search for a new device, once found the "ORBIT device" will appear in the list.

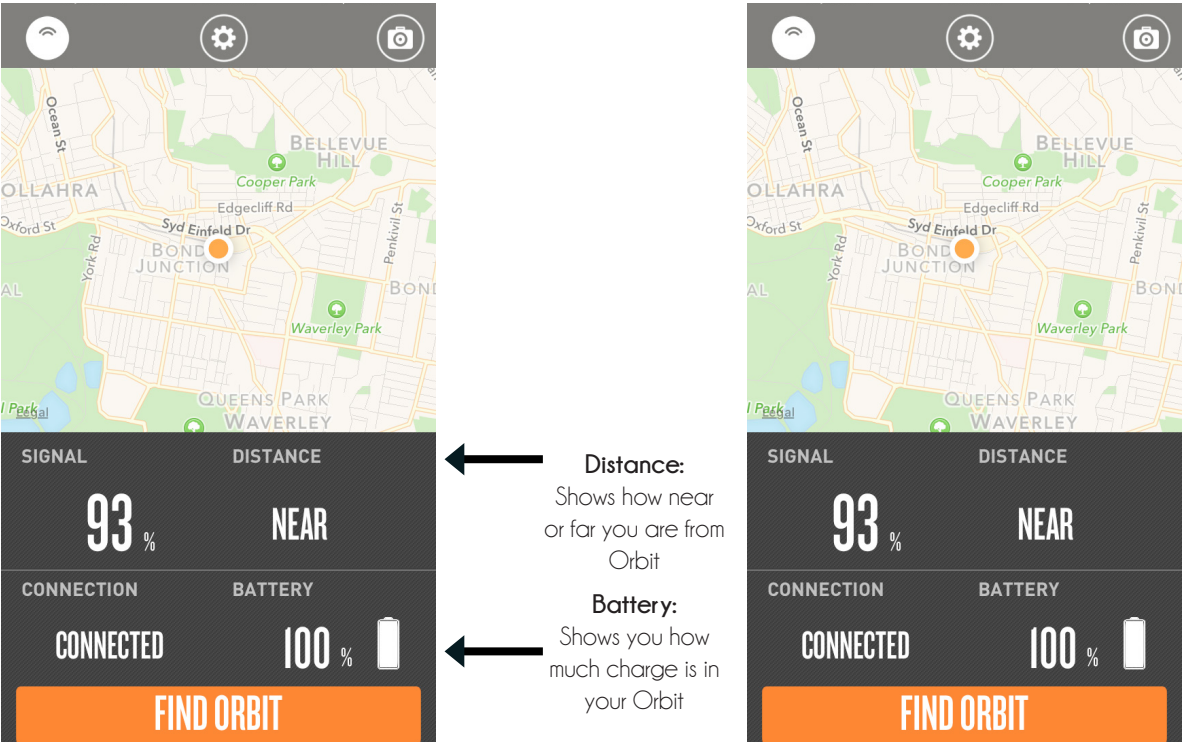
2. Tap on the name of device you would like to search for.



How to Use ORBIT

How to Locate ORBIT

Tap on the Orange button at the bottom of the screen. ORBIT will ring if it is within range. If no ring, a notification will appear the last known location of ORBIT.

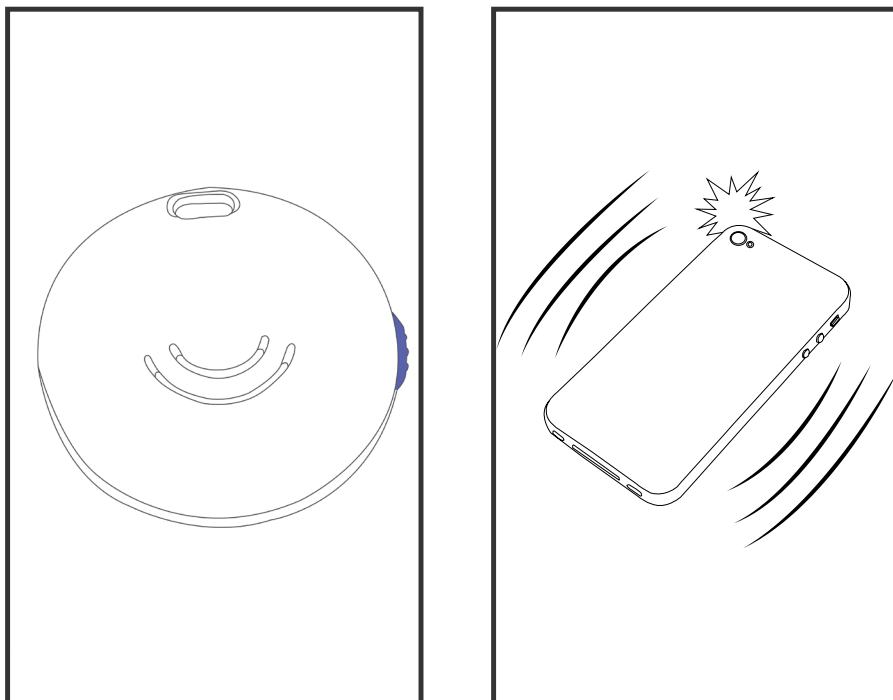


The image shows two identical screenshots of the ORBIT app interface. Each screenshot features a map at the top with an orange dot representing the location of ORBIT. Below the map is a dark grey status bar with four sections: 'SIGNAL' showing '93%', 'DISTANCE' showing 'NEAR', 'CONNECTION' showing 'CONNECTED', and 'BATTERY' showing '100%' with a battery icon. At the bottom of the status bar is a large orange button labeled 'FIND ORBIT'. Arrows point from text labels to these sections: 'Signal: Shows how close you are from Orbit' points to the signal percentage; 'Distance: Shows how near or far you are from Orbit' points to the distance status; 'Connection: Will notify you if you are connected or disconnected from Orbit' points to the connection status; and 'Battery: Shows you how much charge is in your Orbit' points to the battery level.

How to Locate Your Phone

Press the side button on ORBIT, and your phone will ring and flash* if it within range. If no ring, the phone is out of range.

NOTE: This function also works if the app is not running. However, it can take a few minutes for the Orbit to connect to your phone in this case.



How to Take a Selfie

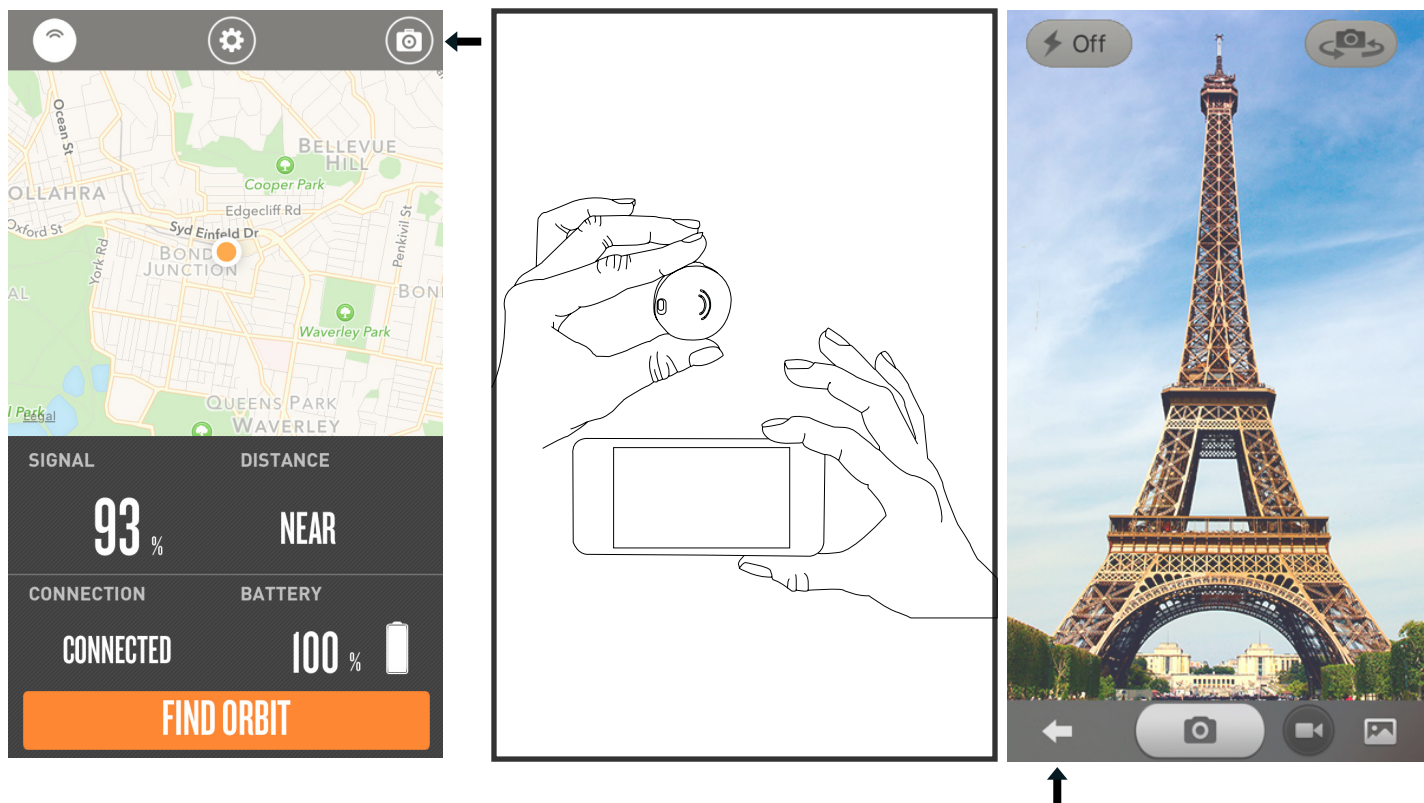
Tap on the top right icon at the top of the toolbar.

Position/focus your phone to what you want to take a photo of.

Click the side of ORBIT to take the photo.

When finished, tap on the arrow on the left side on the bottom toolbar on the app.

****Please note:** That you need to use the camera in the app to use the selfie with Orbit.



Advanced Settings

Tap on the settings button in the middle.

General settings include Separation Alarm and Safe Zone settings.

Separation Alarm

Turning on the Separation Alarm allows for your Orbit and your phone to both ring when the devices step out of the 100ft/30metre radius to notify you that you have forgotten an item.

Safe Zone

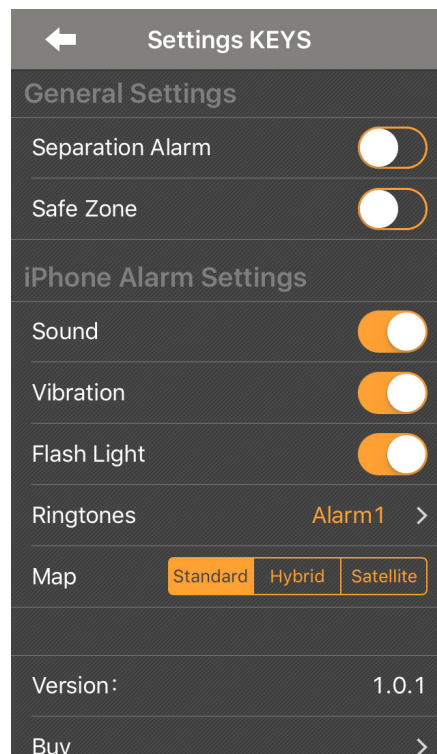
If the Safe Zone feature is turned on, the Separation Alarm will not work when connected to wifi. This feature is perfect for when you're at home around the house.

Ringtones

There are over 15 ringtone alarms to choose from. Select a melody that suits you. Select a different ringtone for different Orbits.

Map

The map gives you three viewing options to find your Orbit. Standard, Hybrid or Satellite.



SUPPORT

Orbit Technology and Tech Details:

Orbit uses Bluetooth Low Energy (BLE) technology to help you locate your items. While Bluetooth technology is a wireless technology, there are significant differences between Bluetooth, Wi-Fi, and GPS technology. Orbit's Bluetooth range is up to 100 ft. Bluetooth is most effective at the 30ft range, depending on the environment. Learn more about Bluetooth at <http://www.bluetooth.com/>

Battery: CR2025 Battery Included.

Product Battery Life: 8765 Hours or 1 Year from shipment.

Is my phone compatible with Orbit?

Orbit requires a phone to be running the Orbit app in the background. Bluetooth must be left on in the background (don't worry, our engineers have minimized the battery drain on your phone by leaving Bluetooth on). Orbit works with: iPhone 5 and later. Samsung S5 and later.

How many Orbit devices can be paired to my phone or tablet?

Apple iOs devices can pair up to 6 Orbit devices at a time. Android devices can pair anywhere between 1-3 depending on the manufacturer and the operating system version.

Can I use the Orbit on humans or my pet?

Orbit is meant to prevent and locate misplaced or stolen items. I'm sorry to say that we do not advise that Orbit should be used on people. We would recommend that you look into live GPS tracking services instead.

Can I be a Distributor for Orbit?

We are glad to hear of your interest in HButler's suite of products! If you would like to distribute Orbit, please contact help@HButler.co and we will be in contact shortly. Thank you and have a great day.

Returns and Refunds

Return Policy: We have worked very hard to create a product you will love and we believe you will love your Orbit product. However, we realize the product you receive from HButler may not be exactly what you expected. Should this rare occurrence take place, the original retail purchaser of the product may return all Orbits purchased in the original transaction, in their original condition, with the original receipt and packaging, within 30 days of the date of delivery to the original retail purchaser and HButler will exchange or provide a full refund of the original purchase price. Please note that this policy applies only to products you purchase directly from HButler. This is in addition to your legal rights and your rights under the Orbit hardware six (6) months Worldwide Warranty.

Warranty Procedure

If you are having any issues with your Orbit, please don't hesitate to email us at help@hbutler.co and a team member will help resolve any issues you're having with the product.

SPECIFICATIONS

Battery

ORBIT is powered by a CR2025 coin cell battery (included). It lasts 6 months with normal use and 12 months when on standby.

When you see this low battery indicator on the upper left hand corner after you sync ORBIT to the app, you have less than one week to replace the battery. We recommend using the same brand (or one with equivalent quality), which should give you the estimated battery life.

Please refer to page 3 on how to replace the battery.

Best practices to maximise ORBIT's battery life:

- Keep the app up to date
- Resist unnecessary tapping of ORBIT as a party trick

Operating temperature range: -22° to 14° F (-30° to 60° C)

Life

The life span of ORBIT is 4 months if used often, and 12 months on Standby. After this time frame you will need to change the battery.

Size & Weight

Dimensions:

Diameter: 34mm/ 1.33"

Thickness: 9mm/ 0.35"

Weight:

20g/0.70oz/0.04 lb

Splashproof

ORBIT is splashproof.

Suitable for dishwashing, splashing and swimming in shallows waters, not snorkeling or diving.

To maintain water resistance:

- Install the back cover correctly
- Do not tamper with the back cover when it is still submerged in liquid
- Avoid prolonged exposure to salt water or other chemicals, e.g. detergent, chlorine
- Avoid moving ORBIT in and out of contrasting extreme atmospheres; saunas, steam rooms, hot tubs and hot showers could distort the sealing gasket
- Avoid opening the back cover unnecessarily
- When opening the back cover to replace the battery, avoid touching the gasket
- Never leave ORBIT open for more than a few hours; a dry gasket will cause the seal to fail

Environmental Conditions

Operating temperature: -4° to 122° F (-20° to 50° C)

Return Policy and Warranty

ORBIT has a Six Months Limited Warranty - for more information, visit:

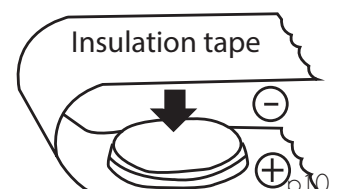
<https://hbutler.zendesk.com/hc/en-us>

Disposal and Recycling

Please kindly be aware that it is the consumer's responsibility to properly dispose and recycle ORBIT and accompanying components. Do not dispose of ORBIT with common household waste, the ORBIT unit is considered electronic waste and should be disposed of at your local electronic equipment collection facility.

For more information, please contact your local electronic equipment waste management authority or the retailer where you bought the product.

When discarding batteries, insulate the + and - faces of batteries with insulating or any kind of non-conductive tape [see diagram]. If improperly disposed, lithium batteries may short, causing them to become hot, burst or ignite.



*For complete Panasonic CR2025 battery warning and disposal information, please refer to original source:

<http://industrial.panasonic.com/www-data/pdf/AAA4000/AAA4000PE15.pdf>

IMPORTANT SAFETY WARNINGS

General Precautions

- ORBIT is not a toy
- Do not attempt to tamper with/modify/disassemble ORBIT
- Do not expose ORBIT to abrasive materials
- Do not place ORBIT near open flames
- Review ORBIT Specifications and other Information > Environmental Conditions and do not expose ORBIT beyond operating temperatures
- ORBIT's metal body conducts temperature effectively, avoid contact when left in extreme temperatures
- ORBIT's edges can be sharp, handle with care

Read, follow and keep this user manual and all safety instructions. Improper installation, use or disposal of ORBIT could be hazardous to your health and put others at risk.

Child Safety

ORBIT contains small parts, which can be a choking hazard. Please keep away from young children.
If battery is swallowed, immediately seek medical help as serious injury may occur.

Battery Precautions

- Follow battery replacement instructions provided with this guide
- Do not charge, short, disassemble, deform or heat batteries
- Do not throw batteries into fire
- Avoid mixed use of batteries, e.g. new, used or different types
- Keep batteries away from direct sunlight, high temperature and humidity
- Keep batteries out of reach of small children. Should a child swallow a battery, consult a physician immediately.

REGULATORY NOTICES

North America

United States: Federal Communications Commissions [FCC]



FCC COMPLIANCE STATEMENT:

This device complies with part 15 of the FCC Rules.

Operation is subject to the following two conditions:

(1) This device may not cause harmful interference, and (2) this device must accept any interference received, including interference that may cause undesired operation.

INFORMATION TO USER:

This equipment has been tested and found to comply with the limits for a Class B digital device, pursuant to Part 15 of FCC Rules. These limits are designed to provide reasonable protection against harmful interference in a residential installation. This equipment generates, uses, and can radiate radio frequency energy. If not installed and used in accordance with the instructions, it may cause harmful interference to radio communications. However, there is no guarantee that interference will not occur in a particular installation. If this equipment does cause harmful interference to radio or television reception, which can be determined by tuning the equipment off and on, the user is encouraged to try and correct the interference by one or more of the following measures:

- Reorient or relocate the receiving antenna
- Increase the distance between the equipment and the receiver
- Connect the equipment to outlet on a circuit different from that to which the receiver is connected
- Consult the dealer or an experienced radio/TV technician for help

WARNING:

The changes or modifications not expressly approved by the party responsible for compliance could void the user's authority to operate the equipment.

FCC ID: PT3-SHOAZ

Canada: Industry Canada [IC]

IC COMPLIANCE STATEMENT:

This device complies with Industry Canada licence-exempt RSS standard(s). Operation is subject to the following two conditions: (1) this device may not cause interference, and (2) this device must accept any interference, including interference that may cause undesired operation of the device.

Cet appareil est conforme avec Industrie Canada exempts de licence standard RSS (s). L'utilisation de ce dispositif est autorisée seulement aux conditions suivantes : (1) il ne doit pas produire de brouillage et (2) l'utilisateur du dispositif doit être prêt à accepter tout brouillage radioélectrique reçu, même si ce brouillage est susceptible de compromettre le fonctionnement du dispositif.

IC ID: 10638A-SHOAZ

European Union

European Union: CE directive



STATEMENT:

Hereby, HButler Pty Ltd, declares that Orbit is in compliance with the essential requirements and other relevant provisions of Directive 1999/5/EC.

WEEE:



The symbol on the product or its packaging signifies that this product has to be disposed separately from ordinary household wastes at its end of life. Please kindly be aware that this is your responsibility to dispose electronic equipment at recycling centers so as to help conserve natural resources. Each country in the European Union should have its collection centers for electrical and electronic equipment recycling.

For information about your recycling drop off point, please contact your local related electrical and electronic equipment waste management authority or the retailer where you bought the product.

- Do not dispose of the Orbit with household waste.
- Disposal of the packaging and your Orbit should be done in accordance with local regulations.
- Batteries are not to be disposed of in municipal waste stream and require separate collection.

Asia

China: CMIIT

CMIIT ID: 2013DJ8436