

7、 Upload data to computer and website

- 1) Power off iGS20E,
- 2) iGS20E connect computer by micro USB cable , then press left button ; iGS20E will be found in my computer as a USB device,
- 3) **Copy : \iGpsport\Activities*fit files to computer except "List.fit" ,**
- 4) Visit www.strava.com , and upload the *.fit files

8、 Specifications

Language : English
GPS : High Sensitive GPS
Screen : 3.0 x 3.8cm ;
Temperature : -10°C ~ 50°C
Weight : 59g
Physical dimensions : 46×71×22mm
Antena : Built-in
Water Proof : IPX6
Memory : More than 90 hours data
data: speed, average speed, max speed, trip distance, total distance, altitude, temperature, time, date, Calorie
File format: fit, upload to www.strava.com
Battery : Over 25 hours (without backlight) , rechargeable lithium-ion
Pass-through : Standard Micro USB
Training : No
Barometric altimeter : Yes
Package include : iGS20E、 Micro USB cable、 Bike mount
Accessory(Seperately) : Out-front bike mount

iGPSport

iGS20E
USER MANUAL
www.igpsport.com

1、 Standard Package Includes

iGS20E *1 Micro USB Cable*1 Bike Mount*2
 O-Rings*4 User Manual *1

2、 Buttons

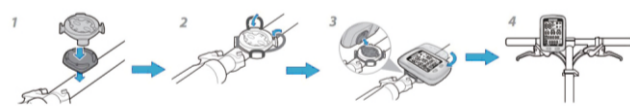


Button	Short-time press	Long-time press
Left	Power on Recording/Pause	Power off Press over 10s to shutdown
Right	Switch Page	Setting Time Zone

3、 Icons

icon	Description
	Battery : 3 bars means full , no bars means empty, flashing means than it will shut down in a few minutes
	Recording : Lighting up means recording,flashing means pause
	GPS Signal : GPS no signal GPS weak signal GPS strong signal

4、 Installing the iGS20E



5、 GPS、 Set time and Backlight

iGS20E built-in GPS

When use GPS, please make sure be outdoor and with a clear view of the sky; Mostly device acquire Satellite signals will be 30s~ 2 min for cold start, and 5s~ 45s for hot start.

Time Setting Zone :

Press right button for a long time until Time Zone is flashing, press left button + /right button- to adjust time zone, then press right button for a long time until the area is fixed and exit the setting status.

Smart Backlight :

Smart turn on/off backlight when sunrise and sunset.

6、 Battery

iGS20E built-in rechargeable Li- Battery :

Temperature	GPS	Backlight	Working time
25°C	on	off	25hours
25°C	on	50% time on	22.5hour
25°C	on	on	20hours

Working temperature : -10°C to 50°C.

Attention :

- 1) please use DC 5V adapter for charging ;
- 2) Chargeable when iGS20E power on/off ;
- 3) please protect USB Plug from waterproof and dustproof.