

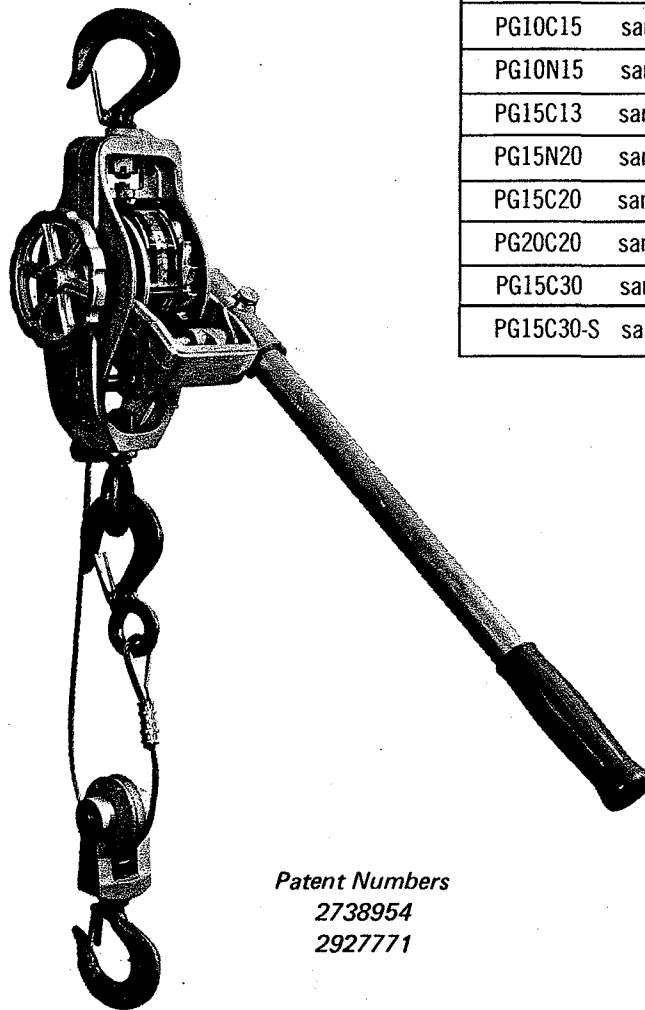
Little Mule®
Cable Hoists
and Yale Wire Rope Pullers

917

PARTS PRICE LIST

JANUARY 1981

Eaton



YALE PULLER MODELS		EATON LITTLE MULE MODELS
PG10C15	same as	115-D
PG10N15	same as	115-S
PG15C13	same as	202-N
PG15N20	same as	505-N
PG15C20	same as	202-WN
PG20C20	same as	404-WN
PG15C30	same as	434-WN
PG15C30-S	same as	430-CDP

Patent Numbers
2738954
2927771

EATON CORPORATION of Florida
HOISTING EQUIPMENT DIVISION
FT. LAUDERDALE PLANT (P.O. Box 14006)
699 S.W. SECOND AVENUE
FT. LAUDERDALE, FLORIDA 33302
PHONE 305/522-5761 — 305/523-7568

EATON CORPORATION

YALE PULLER MODEL SAME AS LITTLE MULE MODEL	PG10C15 SAME AS 115-D-3	PG10N15 SAME AS 115-S-3	PG15C13 SAME AS 202-N-3	PG15N20 SAME AS 505-N-3
---	-------------------------------	-------------------------------	-------------------------------	-------------------------------

MANUFACTURING DATE	MODEL		MODEL		MODEL		MODEL	
Manufactured Prior to 1969	115D		115S		202N		505N	
Manufactured After January 1969	115D-9		115S-9		202N-9		505N-9	
Manufactured During 1972	115D-2		115S-2					
Manufactured January 1973	115D-3		115S-3		202N-3		505N-3	
DESCRIPTION	PART NO.	PRICE	PART NO.	PRICE	PART NO.	PRICE	PART NO.	PRICE
Light Duty Latch Kit	10	1.30	10	1.30	10	1.30	10	1.30
Main Frame w/Bushings	11-3	15.70	11-3	15.70	11	15.70	11-3	15.70
Nut, Hook, Hex Slotted	16HS	.85	16HS	.85	16HS	.85	16HS	.85
Pin, Drive 1/8" x 7/8"	17	.15	17	.15	17	.15	17	.15
Cable Shield (Incl. 28 & 28S)	18	2.05	18	2.05	18	2.05	18	2.05
Shaft, Holding Pawl	219(-2 & -3)	2.80	219(-2 & -3)	2.80	219	2.80	219	2.80
Pawl Control Assembly (Incl. 29 & 30)	20	4.25	20	4.25	20	4.25	20	4.25
Pawl, Holding	21	2.65	21	2.65	21	2.65	21	2.65
Retaining Snap Ring	22	.15	22	.15	22	.15	22	.15
Cable Guide	23	4.25	23*	4.85	23	4.25	23*	4.85
Hook, Shank (Incl. #10)	24	5.40	24	5.40	24	5.40	24	5.40
Bolt, Eye	25	3.75	None		25	3.75	None	
Stud, Main Frame	27	.30	27	.30	27	.30	27	.30
Spring, Actuating	29	.55	29	.55	29	.55	29	.55
Spring, Coil	30	.50	30	.50	30	.50	30	.50
Spring, Shock	31	1.15	31	1.15	31	1.15	31	1.15
Winding Wheel	32	3.05	32	3.05	32	3.05	32	3.05
U-Frame, Includes #51					240	11.00	240	11.00
U-Frame, Includes #51	240-2 & -3	9.70	240-2 & -3	9.70	240-9	9.70	240-9	9.70
Pawl, Loading					41	3.00	41	3.00
Pawl, Loading	41-9/-2/-3	2.85	41-9/-2/-3	2.85	41-9	2.85	41-9	2.85
Spring, Reversing	42	.55	42	.55	42	.55	42	.55
Lever, Spring Operating	None		None		43	2.40	43	2.40
Shaft, Loading Pawl					245	3.90	245	3.90
Shaft, Loading Pawl	245-2/-3	2.85	245-2/-3	2.85	245-9	2.85	245-9	2.85
U-Frame Assembly, Complete					46	23.75	246	23.75
U-Frame Assembly, Complete	246-2 & -3	17.70	246-2 & -3	17.70	46-9 & -3	17.70	246-9 & -3	17.70
Lever, Reversing Control					47A	2.50	47A	2.50
Lever, Reversing Control	47C	1.80	47C	1.80	47C	1.80	47C	1.80
Handle w/Grip	150	4.70	150	4.70	250	5.10	550	5.10
Retainer, Handle Lock	51	1.65	51	1.65	51	1.65	51	1.65
Drum w/Set Screw & Pin	270	14.00	270	14.00	270	14.00	270	14.00
Cable Assembly (Incl. #10)	171	13.35	171	13.35	71A	14.00	571	16.50
Cable Assy.-S. Steel (Incl. #10)	171/SS	21.60	171/SS	21.60	71A/SS	18.25	571/SS	23.75
Shaft, Drum	272	3.65	272	3.65	272	3.65	272	3.65
Pin, Drum	73	.25	73	.25	73	.25	73	.25
Hook, Eye (Incl. #10)	74	5.40	74	5.40	74	5.40	74	5.40
Yoke	90	4.65	None		90	4.65	None	
Pulley	95	4.10	None		95	4.10	None	
Shaft, Pulley	96	3.05	None		96	3.05	None	
Sheave Block Assembly (Incl. #10)	99	17.75	None		99	17.75	None	

* Includes: Nut, Washer and Bolt.

NOTE: All Shafts are supplied with Retaining Rings and Pins as applicable.

NOTE: 47A and 43 Discontinued on all Models After 1969. Replaced by 47C.

When ordering parts Always give the Part Number and Model Number of the Hoist.

Prices subject to change without notice and may be adjusted to Seller's Price in effect at time of shipment. This cancels all Parts Price Lists on Cable Units and supercedes all previous prices.



PARTS PRICE LIST
LITTLE MULE® - CABLE HOIST
JUNE 1979

YALE PULLER MODEL SAME AS LITTLE MULE MODEL	PG15C20 SAME AS 202-WN-9	PG20C20 SAME AS 404-WN-9	PG15C30 SAME AS 434-WN-9	PG15C30-S SAME AS 430-CDP				
MANUFACTURING DATE	MODEL	MODEL	MODEL	MODEL				
Manufactured Prior to 1969 Manufactured After January 1969 Manufactured During 1972 Manufactured January 1973	202WN 202WN-9	404WN 404WN-9	434WN 434WN-9	430CDP				
DESCRIPTION	PART NO.	PRICE	PART NO.	PRICE	PART NO.	PRICE	PART NO.	PRICE
Light Duty Latch Kit	10	1.30	10	1.30	10	1.30	None	
Main Frame w/Bushings	211	16.50	411	23.35	411	23.35		
Main Frame w/Bushings			411-9	18.45	411-9	18.45	411-9	18.45
Nut, Hook, Hex Slotted	16HS	.85	16HS	.85	16HS	.85	16HS	.85
Pin, Drive 1/8" x 3/8"	17	.15	17	.15	17	.15	17	.15
Cable Shield (incl. 28 & 28S)			418	2.75	418	2.75		
Cable Shield (Incl. 28 & 28S)	18	2.05	418-9	2.15	418-9	2.15	418-9	2.15
Shaft, Holding Pawl			419	3.35	419	3.35		
Shaft, Holding Pawl	219	2.80	419-9	2.80	419-9	2.80	219	2.80
Pawl Control Assembly (Incl. 29 & 30)			420	6.25	420	6.25		
Pawl Control Assembly (Incl. 29 & 30)	20	4.25	20	4.25	20	4.25	20	4.25
Pawl, Holding	21	2.65	21	2.65	21	2.65	21	2.65
Retaining Snap Ring	22	.15	22	.15	22	.15	22	.15
Cable Guide	23	4.25	23	4.25	23	4.25	23	4.25
Hook, Shank (Incl. #10)	24	5.40	24	5.40	24	5.40	None	
Bolt, Eye	25	3.75	25	3.75	25	3.75	25	3.75
Stud, Main Frame	27	.30	27	.30	27	.30	27	.30
Spring, Actuating	29	.55	29	.55	29	.55	29	.55
Spring, Coil	30	.50	30	.50	30	.50	30	.50
Spring, Shock	31	1.15	31	1.15	31	1.15	31	1.15
Winding Wheel	32	3.05	32	3.05	32	3.05	32	3.05
U-Frame, Includes #51	240	11.00	440	12.95	440	12.95		
U-Frame, Includes #51	240-9	9.70	440-9	11.00	440-9	11.00	440-9	11.00
Pawl, Loading	41	3.00	41	3.00	41	3.00	None	
Pawl, Loading	41-9	2.85	441-9	2.90	441-9	2.90	441-9	2.90
Spring, Reversing	42	.55	42	.55	42	.55	42	.55
Lever, Spring Operating	43	2.40	43	2.40	43	2.40		
Shaft, Loading Pawl	245	3.90	445	4.20	445	4.20		
Shaft, Loading Pawl	245-9	2.85	445-9	3.10	445-9	3.10	445-9	3.10
U-Frame Assembly, Complete	246	23.75	446	25.60	446	25.60		
U-Frame Assembly, Complete	246-9	17.70	446-9	19.55	446-9	19.55	446-9	19.55
Lever, Reversing Control	47A	2.50	47A	2.50	47A	2.50	None	
Lever, Reversing Control	47C	1.80	47C	1.80	47C	1.80	47C	1.80
Handle w/Grip	250	5.10	450	5.95	250	5.10	250	5.10
Retainer, Handle Lock	51	1.65	51	1.65	51	1.65	51	1.65
Drum w/Set Screw & Pin	270	14.00	470	16.15	470	16.15	470	16.15
Cable Assembly (Incl. #10)	271	16.50	471	18.25	471A	20.70	471C#	15.60
Cable Assy.-S. Steel (Incl. #10)	271/SS	23.75	471/SS	26.75	471A/SS	35.00	471C/SS#	29.25
Shaft, Drum	272	3.65	472	4.05	472	4.05	472	4.05
Pin, Drum	73	.25	73	.25	73	.25	73	.25
Hook, Eye (Incl. #10)	74	5.40	74	5.40	74	5.40	474C	6.65
Yoke	90	4.65	90	4.65	90	4.65	90	4.65
Pulley	95	4.10	95	4.10	95	4.10	95	4.10
Shaft, Pulley	96	3.05	96	3.05	96	3.05	96	3.05
Sheave Block Assembly (Incl. #10)	99	17.75	99	17.75	99	17.75	499C	19.55

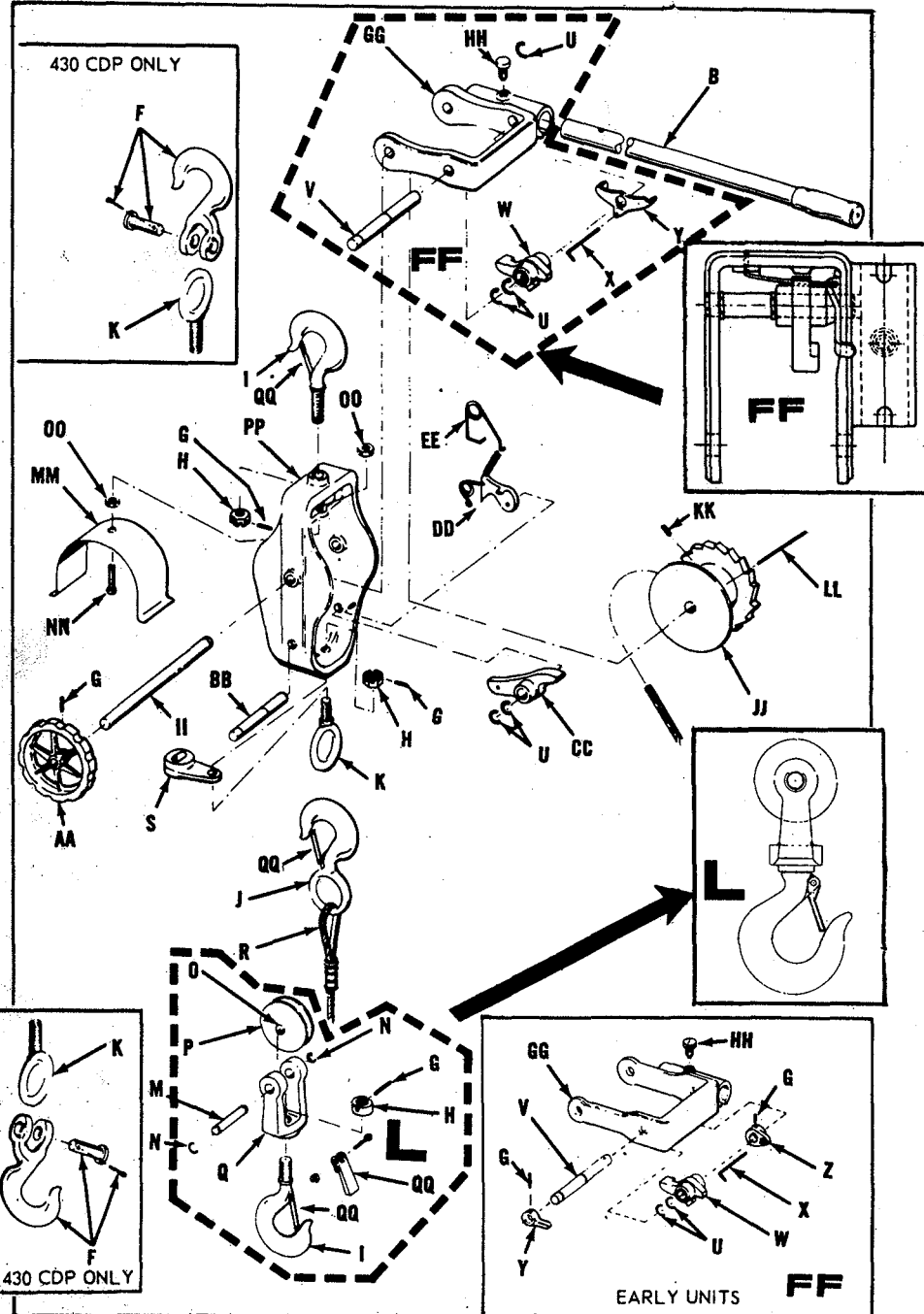
Denotes: Less Hook.

**TO ORDER A PART SPECIFY THE COMPLETE MODEL NUMBER INCLUDING SUFFIX
AND THE COMPLETE PART NUMBER FOUND IN THE APPROPRIATE COLUMN FOR YOUR MODEL.**



EATON CORPORATION of Florida
 HOISTING EQUIPMENT DIVISION
 FT. LAUDERDALE PLANT (P.O. Box 14006)
 699 S.W. SECOND AVENUE
 FT. LAUDERDALE, FLORIDA 33302

Materials Handling



ITEM	DESCRIPTION	QTY	PG15C20	PG15C13	PG10C15	PG10N15	PG20C20	PG15C30	PG15C30-S	PG15N20
			202WN 202WN-9	202N 202N-9 202N-3	115D 115D-9 115D-2 115D-3	115S 115S-9 115S-2 115S-3	404WN 404WN-9	434WN 434WN-9	430CDP	505N 505N-9 505N-3
B	HANDLE	1	202WN 250	202N 250	115D 150	115S 150	404WN 450	434WN 250	430CDP 250	505N 550
F	HOOK, Clevis, slip. 3/8 in.	3							474C	
G	PIN, Drive	AR	17	17	17	17	17	17	17	17
H	NUT, Hook	AR	16	16	16	16	16	16	16	16
I	HOOK, Shank	1	24	24	24 B	24 B	24	24		24 B
J	HOOK, Eye	1	74	74	74 B	74 B	74	74		74 B
K	EYEBOLT (3 used on 430CDP)	1	25	25	25		25	25	25	
L	SHEAVE BLOCK ASSEMBLY (includes G, H, I, M, N, O, P, and Q)	1	99	99	99		99	99	499C	
M	SHAFT, Sheave block	1	96	96	96		96	96	96	
N	RING, Snap	2	22	22	22		22	22	22	
O	BUSHING	1	98	98	98		98	98	98	
P	WHEEL, Pulley	1	95	95	95		95	95	95	
Q	YOKE	1	90	90	90		90	90	90	
R	CABLE ASSEMBLY	1	271	71A	171	171	471	471A	471C**	571
S	GUIDE, Cable	1	23	23	23	23	23	23	23	23
T	SET, Cable guide (early units)	1			123	123				
U	RING, Snap	AR	22	22	22	22	22	22	22	22
V	SHAFT, Loading Pawl	1	245*	45*	145*	145*	445*	445*	445-9	545*
W	PAWL, Loading	1	241*	41*	141*	141*	441*	441*	441-9	541*
X	SPRING, Reversing	1	42	42	42	42	42	42	42	42
Y	LEVER, Upper control	1	47*	47*	47*	47*	47*	47*	47C	47*
Z	LEVER, Reversing spring (early units)	1	43	43	43	43	43	43	43	43
AA	WHEEL, Winding	1	32	32	32	32	32	32	32	32
BB	SHAFT, Holding pawl	1	219	219	119*	119*	419*	419*	219	219
CC	PAWL, Holding	1	21	21	21	21	21	21	21	21
DD	PAWL CONTROL ASSEMBLY	1	20	20	20	20	420*	420*	20	20
EE	SPRING, Shock	1	31	31	31	31	31	31	31	31
FF	U-FRAME ASSEMBLY (includes G, U, V, W, X, Y, GG and HH)	1	246*	46*	146*	146*	446*	446*	446-9	546*
GG	U-FRAME	1	240*	40*	140*	140*	440*	440*	440-9	540*
HH	SCREW, Handle lock	1	51	51	51	51	51	51	51	51
II	SHAFT, Drum	1	272	272*	272*	272*	472	472	472	272*
JJ	DRUM	1	270	270	270	270	470	470	470	270
KK	SETSCREW	1	78	78	78	78	78	78	78	78
LL	PIN, Drive, drum	1	73	73	73	73	73	73	73	73
MM	SHIELD, Cable	1	18	18	18	18	418*	418*	418-9	18
NN	BOLT	1	28	28	28	28	28	28	28	28
OO	NUT, Jam	2	28S	28S	28S	28S	28S	28S	28S	28S
PP	FRAME, Main (includes bushings)	1	211	11	111*	111*	411*	411*	411-9	511*
QQ	Light Duty Hook Latch	1	10	10	10	10	10	10	None	10

** DOES NOT INCLUDE CLEVIS SLIP HOOK. HOOK MUST BE ORDERED SEPARATELY.
 AR - AS REQUIRED.

* ORDER CAN NOT BE FILLED WITHOUT COMPLETE MODEL NUMBER INCLUDING SUFFIX.