

# TECKNET

## TeckNet Door Bell WA688



Note:

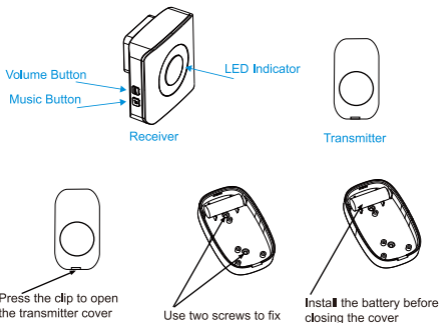
German and French language user manuals can be downloaded from our website: [www.tecknet.co.uk](http://www.tecknet.co.uk).

## Welcome

Thank you for choosing this TECKNET product. To ensure optimum performance and safety, please read these instructions carefully before operating this product. It is strongly recommended you keep this manual for future reference.

The TECKNET WA688 Wireless Doorbell features 52 classic chime tones with an adjustable volume control to cater to your need. This wireless doorbell kit includes one battery operated transmitter and two AC operated receivers, the transmission range is up to 300M in open area.

## Product Layout



## Product Features

- Stylish, sleek design.
- High efficient eco power management which reduces power consumption.
- Powerful transmitter provides an amazing 300M transmission range in open area.
- 52 optional chime tones. You can easily select and change melody.
- Four-level adjustable volume control for each receiver.

## Product Specifications

Transmitter Working Voltage:	<12V
Transmitter Power Consumption:	<12mW
Receiver Working Voltage:	AC 110V (USA), AC 220V (EU, UK, AU)
Receiver Power Consumption:	0.5W
Sound Volume:	25-85db
Working Frequency:	433.92MHZ±2MHZ

## Package Contents

- 1 x Transmitter
- 2 x Receiver
- 2 x Screws
- 1 x Battery
- 1 x Double-Side Adhesive Tape
- 1 x User Manual
- 1 x Warranty Card

## Instructions

### Receiver Battery Installation:

Press the plastic clip to open the cover of transmitter, install the 12V/23A battery (included), then close the cover.

### Music Selection:

There are 52 chime tones for TeckNet WA688. Press the "Music" button to choose a favorite chime, every time you press the button, it would play the next chime for your selection. Once chose a chime, stop press the "Music" button.

### Volume Adjustment:

There are 4-level volumes for TeckNet WA688. Press "Volume" button to increase the volume. When the volume reaches its maximum, press the button again it would turn to minimum volume.

## Pairing Method:

1. Plug one receiver into AC socket.
2. Press "Music" button to choose a chime tone.
3. Follow either A or B step below to enter pairing mode.
  - A. Press the "Volume" button and "Music" button simultaneously, LED will flash along with warning tone "Ding~Dong".
  - B. Hold "Volume" button for 5 seconds, LED will flash along with warning tone "Ding~Dong".
4. Press the transmitter button, selected music will play simultaneously, the pairing is completed.

## Change Chime Tone:

There is no need to delete the pairing before changing the chime tone. Press the "Music" button to select another chime tone, then press "Volume" button and "Music" button simultaneously or hold the "Volume" button for 5 seconds, LED would flash along with warning tone "Ding~Dong" then press the button of transmitter, the receiver would play the new chime tone just selected.

## Delete Pairing:

Press "Music" button for 5 seconds to delete pairing memory. The LED would flash along with warning tone "Ding~Dong", that means the pairing is deleted.

## Receiver and Transmitter Installation

### Transmitter:

Method 1: Adhesive Tape for Transmitter

Apply the double-sided adhesive tape on the back of transmitter case. Remove the outer side of tape and attach the transmitter to the position you need and press for 30 seconds hardly.

Method 2: Screw for Transmitter

There are two screw holes at the rear of transmitter. Press the plastic clip and open the cover of transmitter, use a screwdriver to tighten the screws to fix it on the wall.

**Receiver:** Insert the receiver into AC socket directly.

Note: It's suggested that complete the music selection and pairing before installing the receiver and transmitter, to make sure that the doorbell works properly.

## Maintenance

1. Theoretically, use high quality alkaline battery which will last longer and reduce the chance of electrolyte leakage.
2. In order to protect the precision internal electronic components, it's advisable that unqualified users should not attempt to open the unit for maintenance.
3. Do not exposure to direct sunlight or humid environment - this will adversely affect the unit.
4. Correct use of the products helps to effectively extend the service life of the un

## Disclaimer

Every effort has been made to ensure that the information and procedures in this guide are accurate and complete, no liability can be accepted for any errors or omissions and we reserve the right to make any changes without further notice to any products mentioned herein.

## Warranty

We warrant that products purchased from authorized distributors will meet the applicable product specifications and be free from all defects in design, assembly, materials and workmanship. Please contact retailers or visit our website ([www.tecknet.co.uk](http://www.tecknet.co.uk)) for more information.

# TECKNET

TeckNet  
P.O. BOX 122  
Liverpool  
L9 7WQ  
[www.tecknet.co.uk](http://www.tecknet.co.uk)