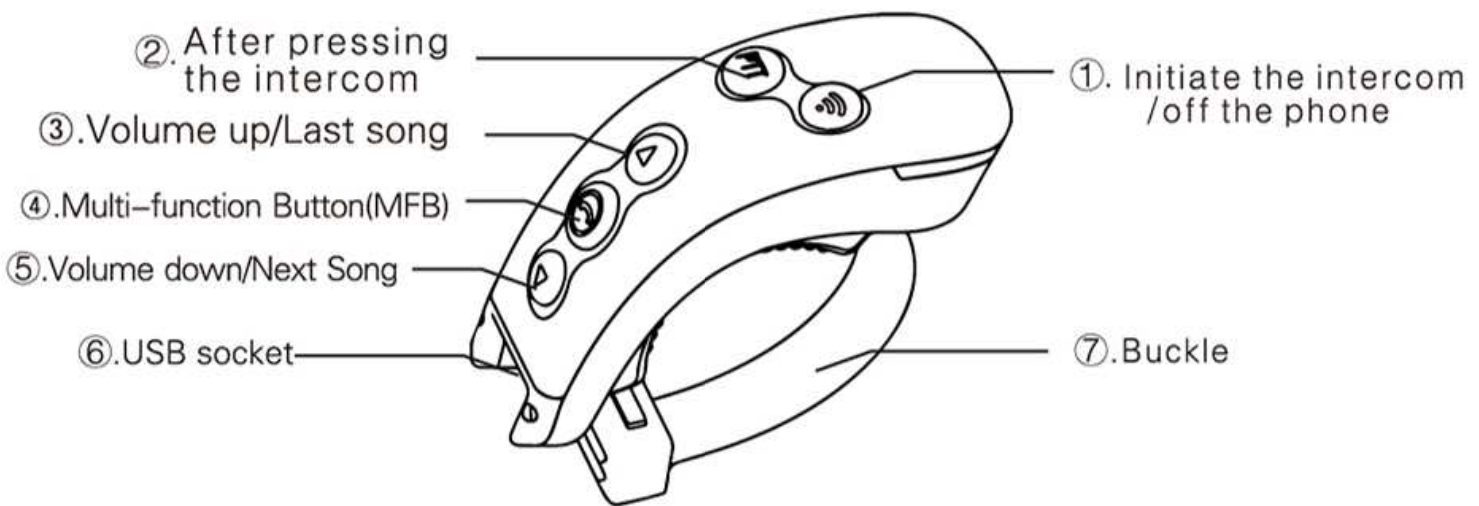
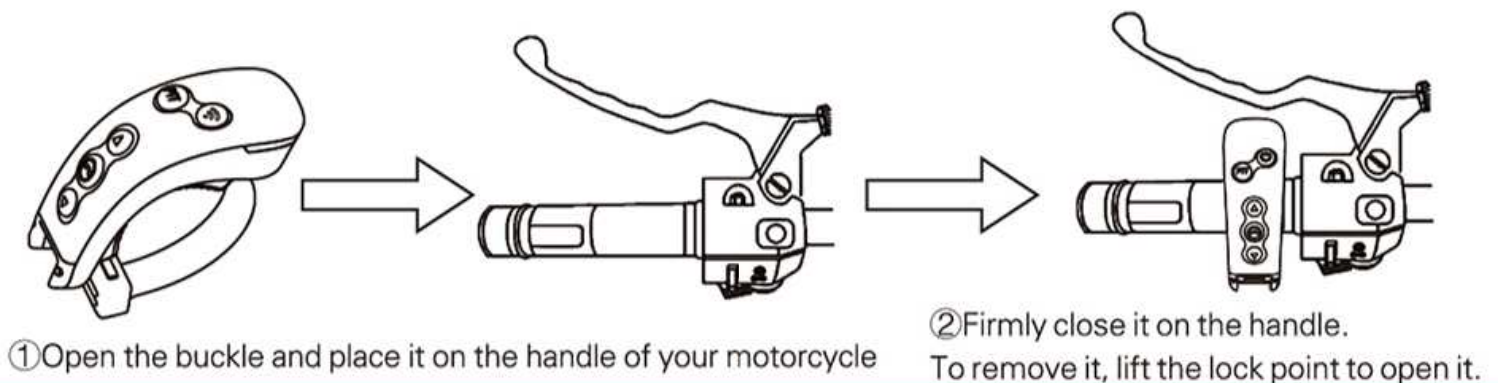


Welcome to use Louis BT Remote advanced wireless control system for your Louis Intercom. The Louis Remote can be mounted to the handlebar of your motorcycle and control all the functions of your BT intercom devices.

1. Control panel and Buttons function description



2. How to mount or remove the Remote on the handle



3. Pairing between Remote and Receivers

(1) L3 pairing with COLO:

1st. (Operations on COLO):

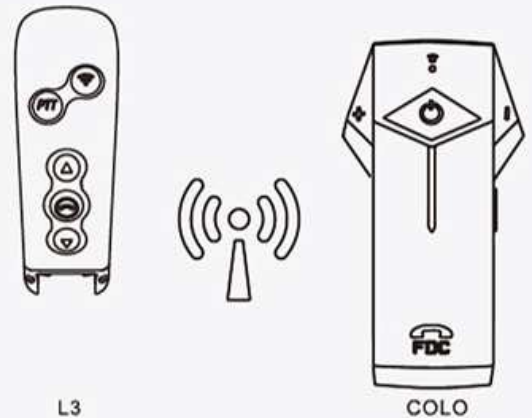
Turn on COLO, and fast press “switch on button” three times, then COLO turns into pairing mode: the red LED lights on, and when you release your fingers from L3 it will turn off once pairing finished;

Or the LED will turn off automatically after 1 minute.

2nd.(Operation on Remote)

Firstly, press “MFB.” then press “power off/Pairing Button” (note: don't release the fingers), LED will flash three times fast; it means L3 has been paired with COLO.

(note: (Note: the remote will stay in the turning on status all the time except when it is charging or no power)



L3

COLO

(2) L3 pairing with L1:

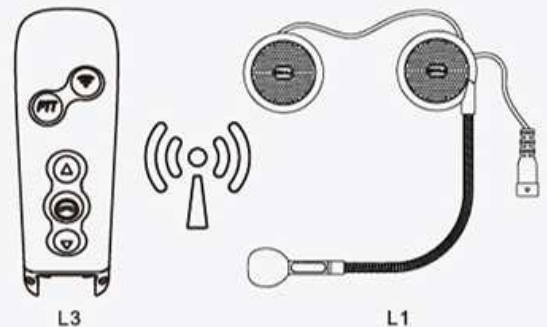
1st. (Operations on L1):

Turn on L1, and fast press “A button” three times, then L1 turns into pairing mode: the red LED lights on, and when you release your fingers from L3 it will turn off once pairing finished.

Or the LED will turn off automatically after 1 minute;

2nd.(Operation on Remote)

Firstly, press “MFB.” then press “power off/Pairing Button” (note: don't release the fingers), LED will flash three times fast; it means L3 has been paired with L1.



L3

L1

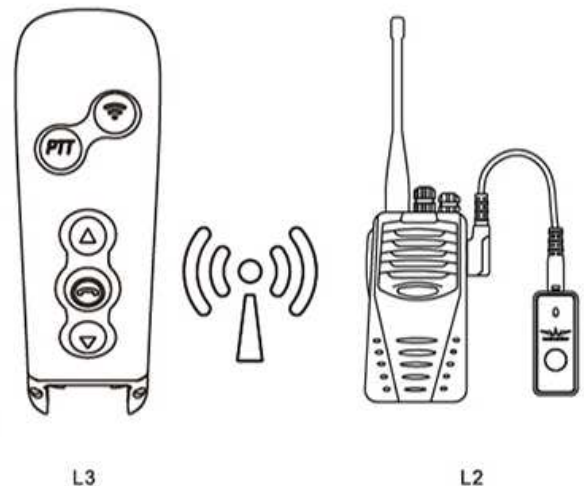
(3)L3 pairing with L2:

1st. (Operations on L2):

Turn on L2, and fast press "Switch on button" three times, then L2 turns into pairing mode: the red LED lights on(when pairing finished it will turn off after you release fingers from L3.Or the LED will turn off automatically after 1 minute.), and when you release your fingers from L3 it will turn off once pairing finished. Or the LED will turn off automatically after 1 minute;

2nd.(Operation on Remote):

Firstly, press "MFB." then press " PTT Button " (note: don't release the fingers), LED will flash three times fast; it means L3 has been paired with L1.



4.About Maintenance

- (1)Keep away from the extremely high (or low) temperature, the best storage environment is -10 to +60 degree, or will reduce the life time of devise.
- (2)Keeps away from the fire.
- (3)Keeps away from the sharp object, it may cause scratches or damage on the product.
- (4)Do not try to disassemble the Remote.
- (5)For a long time without using, please put the remote at a dry place, and make sure one charging per month in order to guarantee the performance.

It is our pleasure to solve any issues for you when you are in the process of using this product. You can contact us by scanning the following D bar code.

5.Technical data sheet

- (1), Micro USB
- (2), Standby Time: 260 days
- (3), Working Time: 10 hours
- (4), Battery Type:
Rechargeable polymer 55mAh

6.Warranty: 1 Year