

Introduction:
Guardian III Kit is made of a Guardian PIPE III Mod and a Micro TFV4 Plus Tank. Bluetooth PIPE III is the most powerful and fashionable pipe mod with 75w maximum output, Bluetooth 4.0 and Auto-Temperature Control supported Stainless Steel wire as well as Ni200 and Titanium. Micro TFV4 Plus, featuring sub-ohm cores, top refill system and double-layered drip tip, is designed to bring you the unbeatable taste! This kit also includes a larger replacement glass tube and an extension adapter so that you can extend the original 3.5ml tank to 5ml. Innovation keeps changing the vaping experience!

The Kit Includes

- 1x Guardian PIPE III Mod (75w)
- 1x 0.35Q Micro Fused Clapton Dual Core (Pre-installed)
- 1x 0.25Q Micro Stainless Steel Dual Core
- 1x SMOK Vape Band
- 1x Micro USB-USB Upgrading Cable
- 1x Spare Parts
- 1x Micro TFV4 Plus Tank (24.5mm)
- 1x Replacement XL Glass Tube
- 1x Tank Extension Adapter
- 1x eGo-USB Charging Cable
- 1x User Manual

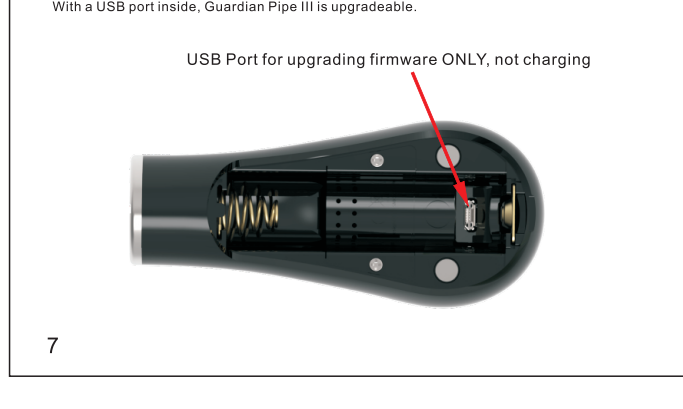
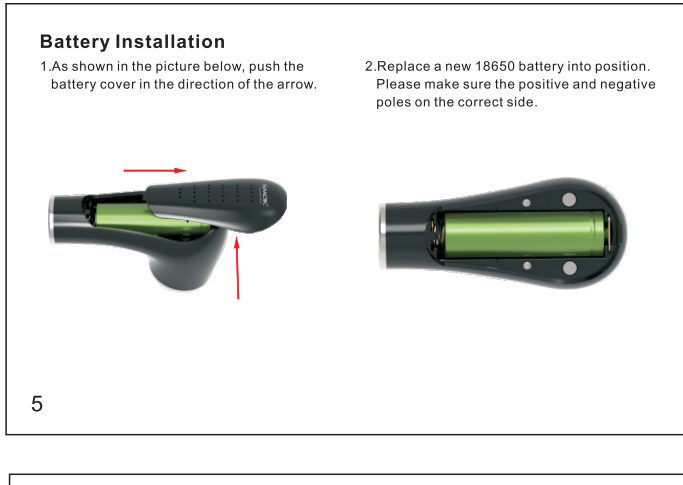
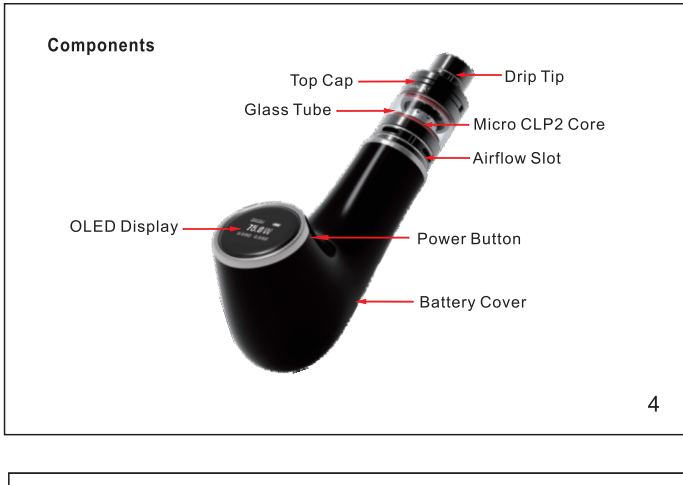
Specifications
Guardian Pipe III
Size: 101.8x59.1x46.3 mm
Weight: ~ 119 g
Output Power: 1W-75W
Output Voltage: 0.7V-9V
Resistance Range: 0.06Q—2.0Q (Temp Mode)
0.1Q—3.0Q (Watt Mode)
Temperature Control Range: 200°F-600°F/100°C-315°C
Material: Polycarbonate/ABS Alloy (PC/ABS)

Micro TFV4 Plus
Material: Glass & Stainless Steel
Weight: 69g
Dimension: 24.5mm x 51mm
Thread: S10
Capacity: 3.5ml(L)/5.5ml(XL)

Verification

- Using your Smartphone or PC to visit SMOK official website: <http://www.smoktech.com/support/>
- Scratch off the coating of the security label on packing box to get the 16 anti-fake codes. Fill them into the input box on the webpage to verify. The result will come out after a few seconds.
- If you have any question, please contact SMOK consultant via e-mail, phone or our website to get more help.

Warranty
Guardian Pipe III Warranty Period: 6 Months from the Purchase Date.
Within the 6 Months, some items may not be eligible for service due to misuse, damage, or other failures caused other than by manufacturer defects or premature failure. Please contact SMOK Authorized Vendor for more information and terms of service.
The "Guardian Pipe III Customer Card" is an important proof for customers to get warranty service, please keep it. And read the card carefully and fill it out correctly. Warranty requests must be accompanied by this card.
For more warranty policy and process, please visit our official website: <http://www.smoktech.com/support/>



Mod Features

- Accurate & Intelligent Auto-Temperature Control: you only need to adjust the temperature, and the wattage will be automatically controlled.
- Support temperature control with Stainless Steel as well as Nickel 200 & Titanium, and adjust their TCR (Temperature Coefficient of Resistance).
- Adjustable Initial Resistance: As temperature sensing coils tend to be sub-ohm, the poor contact problem can make a big error. This function is designed to ensure the accuracy of temperature control by adjusting the initial resistance when an error occurred.
- Bluetooth 4.0 Technology: Bluetooth low energy. Without any operation for 10 minutes, it will go into sleep mode automatically.
- Special Draw Effects: Hard/Normal/Soft/Max/Min.
- Puff Plan: the integrated puff counter will record the numbers of puffs you have taken. And it also allows you to set your daily puff numbers.
- Upgrade Firmware: you can upgrade your mod firmware through connecting it to computer.
- OLED Display: It presents all key pieces of information, including output wattage, output voltage, atomizer resistance, remaining battery life, temperature, etc.
- 12 Seconds Cutoff: this mod will automatically shut down the output when the power button is held for longer than 12 seconds.

Short Circuit/Low Resistance Protection: when short circuit occurs or the resistance is too low, the mod will automatically power off.
Overheat Protection: when the temperature inside the mod is over 90°C, the mod will automatically prevent vaping, so please wait for a moment.
Low-battery Warning: when the voltage is lower than 3.4V, the screen will display "LOW BATTERY". Please stop vaping and replace the battery.

Mod Operation Guide

- Power on: fast press the power button five times within two seconds, then the screen shows "SMOK-EPV75 1.00-WELCOME", which means the Mod has been turned on.
- Under temperature control mode, when you connect a new atomizer, the Guardian Pipe III will prompt "IS NEW COIL? Y/N", please choose Y, if you just disconnect and reconnect your existing atomizer, please choose N. (Be careful to only attach new atomizers that have cooled to room temperature to the device.)
- After starting up, fast press the power button three times within two seconds, the screen will display menu 1 to 8. After setting up, wait for 2.5 seconds, the interface will automatically return to the main menu.

- Choose menu 1, the screen displays ; you can adjust wattage or temperature up.
- Choose menu 2, the screen displays ; you can adjust wattage or temperature down.
- Choose menu 3, the screen displays ; wait for 2.5 seconds or hold down the power button to enter operating mode interface.

You can switch between "TEMP MODE" and "WATT MODE".
Under "WATT MODE", you can set special draw effects: HARD, NORM, SOFT, MAX or MIN.
Under "TEMP MODE": firstly, you can set special draw effects, next, you can select coil material: TC-NI/TC-TiTC-SS, and then set atomizer type: Single Coil or Dual Coil. Finally, adjust TCR (Temperature Coefficient of Resistance).

- Choose menu4, the screen displays ; wait for 2.5 seconds or hold down the power button to Bluetooth setting interface; you can turn Bluetooth on or off.

How to connect the SMOK Smart BEC app with Guardian Pipe III: once you turn the Bluetooth on, and launch the app, it will search for the Guardian Pipe III. You must make the device discoverable in order for it to be located. Then press to select the Guardian Pipe III and pair. When it has been connected you will be prompted to enter a password, and our initial password is 000000.

- Choose menu5, the screen displays ; wait for 2.5 seconds or hold down the power button to enter puff plan interface which shows your current puff numbers and maximum ones, and you can set daily puff number by pressing the power button. "NEVER" represents unlimited puffs. It also provides puff counter clearing function. Waiting for 2.5 more seconds, it will prompt "PUFFS RESET Y/N", choose Y to clear.
- Choose menu6, the screen displays ; wait for 2.5 seconds or hold down the power button to enter screen setting interface.

You can switch between "STEALTH" mode, "SIMPLE" mode and "NORMAL" mode.

- Choose menu7, the screen displays ; wait for 2.5 seconds or hold down the power button to enter basic functions interface.
- Choose ; you can set screen saver time (15 seconds to 240 seconds).
- Choose ; you can set screen brightness.
- Choose ; you can set screen rotation 180 degrees.
- Choose ; Adjustable Initial Resistance.
- Choose ; you can set date and time.
- Choose menu8, the screen displays ; wait for 2.5 seconds or hold down the power button to enter submenu, you can choose "Yes" to turn power off.

4. Special Draw Effects:

- HARD:** Max draw, the output power will increase 15% than the normal within the first two seconds.
- HARD:** Hard draw, the output power will increase 10% than the normal within the first two seconds.
- NORM:** Normal draw, normal output power.
- SOFT:** Soft draw, the output power will decrease 10% than the normal within the first two seconds.
- MIN:** Min draw, the output power will decrease 15% than the normal within the first two seconds.

Prompts

- The input voltage is higher than 4.5V, the device can't be operated, please replace a battery that within limits.
- The voltage is lower than 3.4V, please stop vaping and replace the battery.
- The resistance is lower than 0.10Q under wattage mode or lower than 0.07Q under temperature control mode.
- The resistance is between 3Q and 10Q.

- The resistance is higher than 10Q or without attaching atomizer.
- Output short circuit.
- Immediately vaping after a short (please wait at least 5 seconds).
- The display screen will be unlocked by pressing the power button 5 times.
- The display screen will be locked by pressing the power button 5 times.
- The temperature inside the mod is overheating, please stop vaping.
- Power on!

- Power off!
- Temperature protection under temp mode.

If you need any additional information or have any questions about the products or its use, please contact your local SMOK agent or to visit our website www.smoktech.com

Welcome to download our APP, share your vaping experience and communicate with SMOK's global users here.

Tank Operations
Tank Extension

- Remove the existing glass tube from top cap and the base.
- Take a tank extension adapter and screw it on the inner air hole of top cap.

- Take a replacement glass tube and connect to the base and top cap.

E-liquid Filling

- Hold the tank with one hand, and use another one to press top cap and move it counterclockwise.
- Add e-liquid through the slot, and pay attention not to drip it into the central airflow tube.

- Close the cap carefully and firmly. Then let it stand for several minutes to get the organic cotton completely saturated.

Atomizer Core Replacement
Firstly, screw the base part off the tank; then screw the atomizer core off the base part, and replace with a new one.

Air Control
Rotate the adjustable airflow ring to control air input.

RBA Building
(Micro R2 RBA core not included. Customers who desire it can purchase separately.)
1) Before starting make sure your hands are clean.
2) Taking the Micro R2 RBA apart.

3) Installing and positioning the pre-wrapped coil.
Place the coil between the posts and wrap the ends around the screws and tighten up, once all in place make sure the coil is lined up with the air hole, and NOT touching the base.

- Cutting a strip of cotton and make sure it's not too much and not too less.
- Inserting the cotton, and placing it in the middle.
- Cutting the cotton at an angle and make sure it's not too short and not too long.
- Wet the coil with your e-liquid and adjust the cotton.

Warning: Coils must be checked for resistance before they are fired on a device, and re-checked periodically to ensure the resistance remains the same.

12. Warnings

- Before use please read the manual carefully.
- Before installing atomizer, please make sure the air drain cannot be blocked in case of feeling suffocated when you are vaping.
- Battery should not be completely discharged, or it will become very difficult to charge. Please replace with new one when it completely discharged.
- Please do not keep the liquid inside the atomizer if the device is not going to be used for a long period.
- Please refill the tank when the e-liquid is nearly used out to avoid dry-burning of the atomizer.
- Please do not drop, throw or mishandle this product as the outer shell or inner components may become damaged.
- In order to prolong the operation of your product, please keep it away from excessive temperature and humid environment.
- Please keep this product away from children and pregnant women.



项目名称 DRAWING	GUARDIAN III Kit 说明书	图纸编号 DRAWING NO.	80110209011
设计师 DESIGNED BY	王碧林	审核 APPROVED	
尺寸 SCALE	90*57 mm	工艺 CRAFT	封面字体烫银
材质 MATERIAL QUALITY	封面黑色皮纹(加厚纸张) 内页157g 铜版纸	日期 DATE	2016.01.18