

## **BH60**

CPSC 1203

AS/NZS 2063-2008+A1:2009

EN1078: 2012+A1: 2012

Shenzhen Qianhai Livall IoT Technology Co., Ltd.

EC Type examination conducted by:

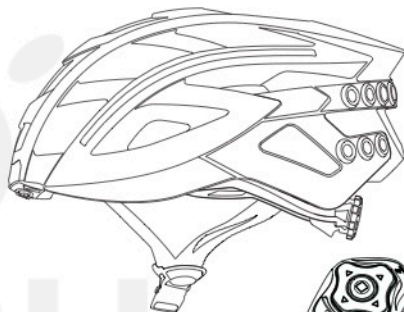
SGS United Kingdom Ltd.

Weston-super-Mare, BS22 6WA, UK

Notify Body No. 0120



**BH60&BJ100**



**LIVALL**

Smart Safety Helmet



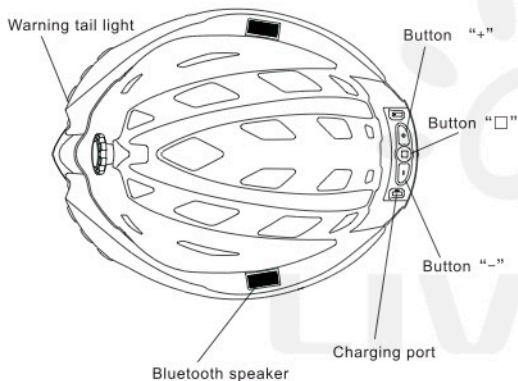
Designed and Assembled in Shenzhen China

**LIVALL**

Smart Safety Helmet

## I. INTRODUCTION

This smart safe-riding helmet (hereinafter referred to as "bling helmet") is made of the lightest and safest materials, which makes it more comfortable and safer. Its fine ventilating structure inside enables air to flow smoothly through so as to achieve the best cooling effect. It also has Bluetooth speaker, and warning tail light.



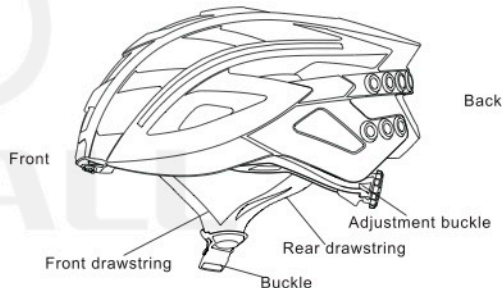
## II. PACKING LIST

One helmet	One hag tag
One USB charging cable	One warranty card
One Blingjet	One product instruction

## III. WEARING INSTRUCTION

### Usage

This safety helmet adopts a fixed setting, easy to operate, putting on or taking off the helmet only with the buckle. Flatten the drawstrings on both side and make them clinging to your face, buckle up it when the helmet is tightly putted on. If the drawstrings become loose, please take off the helmet and adjust them properly. When adjusting the drawstrings, please use one hand to fix the buckle and then adjust the drawstrings within proper tightness. If you want to strengthen the rear drawstring, pull it tight from its back, use one hand to fix the helmet and another one to fix the drawstring under the chin and adjust the four drawstrings to a most appropriate position.



### Proper Wearing

The helmet must be worn closely to your head. If you want to



**INCORRECT**



**INCORRECT**



**CORRECT**

lower the front to cover your forehead, you could make the drawstring close to your chin and loose the rear drawstring; if you want to heighten the front of the helmet, loose the drawstring and tighten the rear drawstring.

#### **Comfort adjustment**

In order to check the tightness of the helmet, you could put on the helmet and buckle up it, open your mouth to feel whether the drawstrings are closely attached to your chin, and then move your helmet forward and backward, if the helmet becomes loose, then the tightness of the drawstring must be strengthened and make sure that the thickness of the pad is proper. The helmet could not be able to move forth and back much distance; the helmet could not be taken off if the buckle is not opened. Note: It is necessary to reaffirm whether the helmet is in a good condition every time you wear.

#### **Checking**

Make sure that the helmet must be put on your head correctly and firmly . Readjust the tightness of the drawstrings to a proper position if the helmet still shakes. For the best protection effect, please make sure that the helmet is suitable for you and

could be tightly wore. Check the adjustment again every time you wear to ensure that the helmet could be closely put on your head.

#### **Clean Helmet**

For there is electron component in the helmet, pls use the clean soft cloth to clean it. To clean the helmet , do not use hot water, salt water, benzene, thinner and so on; can use the cleaner such as vinyl.

### **IV. OPERATING INSTRUCTION**

Please download and install Livall APP from Livall websiste [www.livall.com](http://www.livall.com). Please refer to the add equipment method of phone APP. It might need few seconds to connect with the helmet for the first time . Then it will be connected automatically next time with the same smart phone. Please read the user manual carefully.

#### **Start Up**

Long press "□" for 2s till you hear the "start up" sounds, meanwhile the outline light and tail light will flash twice in orange.

#### **Power Off**

When the device is in a state of working, long press "□" till you hear the "power off" sounds, meanwhile the outline light and tail light would flash once in orange.

#### **Connecting to Bluetooth Earphone**

Connect the bluetooth with your smart phone when first-use or when change to another smart phone. When the device is power off, long press "□" till you hear the "matching" sounds, means the device starts matching; scan the device with your phone which the Bluetooth

is available. and click it to connect when spotting the equipment of "BH60". The speakers on both sides will make the noise of "matching completed" when the connection is completed. The bluetooth will be connected automatically next time.

### **Answer and hang up calls**

When there's an incoming call, the device would give out notification voice, press "□" to answer the call and long press for 1S to reject; during calls, press "□" to hang up.

### **Redial calls**

When the device is powered, quick press "□" twice to dial the last number.

### **Music player**

When the device is powered, press "□" to play music (need to open the music player APP in your phone before this operation). Long press "-" to play the previous song and "+" the next song.

### **Volume adjustment**

During music playing or taking calls, press "+" to increase volume while "-" to decrease

### **Notification voice switches of Bluetooth speaker**

The default setting is English. When the product is powered, first hold "-" and then press "+" to cycle switch languages, from English→Chinese→French→Spanish; when the language is selected, loose "-".

### **Charging**

Use the USB cable to connect the USB port beneath the tail light to the charger with USB (DC 5V) port. When it's connected, the two indicator lights in the middle of the tail light would flash red (no such indicator under normal standby state) and turn off when the charging is done.

The electricity of the charger is suggested to be > 1A and the charging time about 1.5h.

### **Factory Reset**

Hold "□" till the outline light shows white, and about 20 seconds later, the white light would automatically fade away and the product is reset.

## **V. PRECAUTIONS**

### **Temperature**

The safety helmet would be damaged under over 150 °F (65.6 °C). Under hot weather, if the helmet is put in dark vehicle or storage bag, its temperature would be even higher. Heat would incur irregular misshaping to the surface of the helmet, like bubbling or pits. If this happens, please discard this helmet immediately and replace it with a new one. To insure a proper use of this helmet, please carefully read this Instruction before use so as to get to know the features, performance, wearing, maintenance and other aspects of the product.

### **Safety precautions**

This helmet is designed to burden damages and injuries from external impact. Although such injury may seem minor, it could damage the helmet. If the helmet is damaged from falling or other causes, please discard the helmet and replace it with a new one. Some accidents are unavoidable for whatever safety helmet and the damaging degree may differ from the impacting; even at a slow speed, severe head injuries or life threatening damages may incur. So please make sure that you've completely and carefully read this Instruction and have arranged all possible protections before riding the bike, scooter or wearing the roller skates.

### **Speaker usage instructions**

This product is equipped with Bluetooth speaker, and taking calls during

riding may distract the user's attention, so it is suggested that distracting functions like calls and voices be used after the bike is stopped; listening to music during riding may affect user's attention to surrounding sounds, which may bring potential safety hazards, so it is suggested that the volume be lowered.

### **Warnings**

This safety helmet is specially designed for bikes, so please don't use it on other mobile vehicles, like motor cars or motor bikes. No safety helmet could completely avoid all unpredicted impacting, but for the best protection effect, the size of the helmet must be proper and the buckle must be tightly buckled. Unless advised by the manufacturer, please refrain from modify or remove any part of the helmet. Children should refrain from using during climbing or other activities, in case of getting trapped or entangled from wearing this helmet.

1. No helmet can protect the wearer against all possible impacts.
2. The helmet is designed to be retained by a trap under the lower jaw.
3. To be effective, a helmet must fit and be worn correctly. To check for correct fit, place helmet on head and make any adjustments indicated. Securely fasten retention system. Grasp the helmet and try to rotate it to the front and rear. A correctly fitted helmet should be comfortable and should not move forward to obscure vision or rearward to expose the forehead.
4. No attachments should be made to the helmet except those recommend the helmet manufacturer.
5. The helmet is designed to adsorb shock by partial destruction of the shell and liner. This damage may not be visible. Therefore, if subjected to a severe blow, the helmet should be destroyed and replaced even if it appears undamaged.
6. The helmet may be damaged and rendered ineffective by petroleum and petroleum products, cleaning agents, paints, adhesives and the like, without the damage being visible to the user.

7. A helmet has a limited lifespan in use and should be replaced when it shows obvious signs of wear.

8. The helmet should not be used by children while climbing or doing other activities where there is a risk of hanging or strangulation if the child gets trapped whilst wearing the helmet.

### **Water warnings**

This product is only resistant to short period rainfall, so to avoid any malfunctions, please try to avoid riding during raining.

#### **VI. Trouble-shooting of electronic functions**

During use or after impact (without misshaping or cracking), if the following functions go wrong, please follow the steps to fix them; if failed, please contact the after-sale service center.

### **Malfunctions**

1. Unable to get started up
2. When starting up, only heard the start up notification sound but no flashing outline lights
3. After start up, it automatically powers off after a short period of use (maybe the battery is low)
4. After unplugging the charging cable, the charging light is still on and rebooting could not fix it.
5. Start up is normal, but the speaker has no notification sound or has just single tone or noises.

### **Trouble shooting steps**

1. Charging for 1 to 2 hours
2. Check the main control (the front) and the inner side of two speakers too see whether there're clear cracks, if does, please manually push it in.
3. Factory reset, hold "□" about 20 seconds then unpress, the product is reset. And then start it up, if the trouble is not fixed, please contact the after sales center.

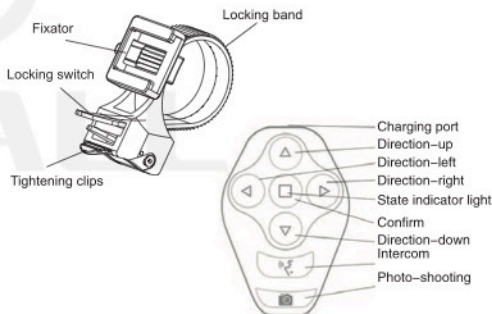
## VII. APPENDIX TECHNICAL SPECIFICATIONS

Bluetooth:	BT 4.0 + HFP/HSP/A2DP
Bluetooth distance:	Max.10m
Speaker:	Stereo 2*0.5W
Mic:	-39dB microphone
Tail light:	8 +6 color LED
Buttons:	three buttons, start up (play, pause, power off), volume + (next song), volume - (previous song)
Charging port:	MicroUSB
Electricity parameter:	DC 5V/0.5A
Battery capacity:	380mAH (1.4WH)
Charging time:	1.5h
Battery life:	Max.10h
Standby duration:	Max.180 days
Product size:	285*230*150mm
Product weight:	319g±5%

## BJ100 Bling Jet

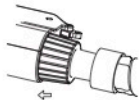
Thanks for using Livall BJ100 Bling Jet. To insure a safe and satisfactory operation, please read this Instruction carefully before use. Please properly keep this Instruction for further reference.

Installing this product on the handlebar of the bike could realize an easy control of Livall APP, with quick access to functions, like music player, intercom and photo shooting, ensuring a safer as well as easier cycling experience. Adopting the latest technology of Bluetooth 4.0 with low consumption, the product appropriately arranges its buttons and is suitable for all bicycles.

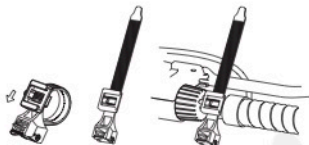




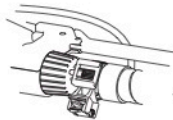
## 1.INSTALLATION



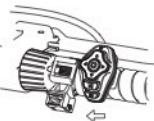
Move the brake on the handlebar



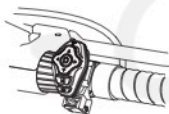
Loosing the locking switch, take out the locking band



Fix the locking band on the handlebar



Put the Bling Jet into the fixator



Installation completed

## 2.INSTRUCTION OF STATE INDICATOR LIGHT Charging

flash every four seconds and stop when it's charged

### Under connection

under standby state, press any button would quick flash the state indicator light, indicating that it's connecting. When the connection is completed, the indicator light would stay

on and when it fails to connect, it enters connection waiting state.

### Connection waiting

under standby state, press any button for 3 seconds and if there's no Livall APP for connection, the indicator light would cycle flash every 2 seconds, indicating the connection waiting state, and if there's still no connection for 30 seconds, it'll return to standby state.

### Connection completed

the indicator light would stay on when the connection is completed, until it enters standby state

## 3.CHARGING

Remove the USB water-proof block, and use the Micro USB cable to connect chargers with safety certificate marks (like 3C or UL, etc.). During charging, the indicator light would cycle flash every four seconds and would stop once the charging is done

## 4.PHONE CONNECTION

please refer to the add equipment method of phone APP

## 5.PRECAUTIONS

This product could only be used with Livall APP, with no third-party APP currently supported.

Please properly keep this product and its relevant accessories in places where children could not easily reach.

To avoid danger, please refrain from putting this product

near any fire or heat sources.

Performing unauthorized modification or self maintenance would lead to incapacity of your normal use and free maintenance expiration.

For more information, please visit [www.livall.com](http://www.livall.com)

## 6.PRODUCT SPECIFICATIONS

Wireless Distance	Max.10m
Buttons	four direction buttons, confirm, intercom, photos
Charging Port	Micro USB
Electric Parameter	DC 5V/0.3A
Battery Capacity	3.7V/120Mah
Charging Duration	2h
Battery Life	100h
Standby Duration	180d
Size	57.8*37*55.4mm
Application	all bicycles

## AFTER-SALES SERVICE WARRANTY CARD

After-Sales Information:

Thank you for purchasing LIVALL product, please read the following instructions for better service

1. The warranty time is 1 year after purchase. Any quality problem can be maintained free or it can be replaced within 3 months after purchase if re-sale is available.

2. Damages caused by the following reasons are not included in the scope of free warranty:

Exceeding the specified warranty period;

Damages caused by unsuitable operation;

Damages caused by user removing or repairing it by themselves as well as other man-made damages.

3. This warranty card is the important certificate for the warranty service provided to the end user, please keep it well. The card should be taken along with the product to the manufacturer when the maintenance is required.

4. Our company reserves the rights to modification and explanation for above terms and conditions.

Please visit [www.livall.com](http://www.livall.com) for more information.

User Name: \_\_\_\_\_

Tel.: \_\_\_\_\_

ID No.: \_\_\_\_\_

Home Address: \_\_\_\_\_

Seller: \_\_\_\_\_

Purchase Date: \_\_\_\_\_

Maintenance Record: \_\_\_\_\_

Note: This form should be completed in real details, otherwise, it would be invalid.

