



MiraScreen5G

User Manual

Rev. 1.20

Introduction

MiraScreen 5G is a Wi-Fi display receiver, which supports a reliable WiFi 802.11ac 5GHz + 2.4GHz dual band connection. It supports the Miracast standard for Android & Microsoft Windows, and DLNA for home multimedia application. Furthermore, it also complies with Apple AirPlay Mirroring for iOS and Mac OS x. Enjoy screen mirroring with MiraScreen!

Support@MiraScreen.com

Hardware Installation



Please follow below steps to setup MiraScreen:

Step 1: Connect WiFi cable (micro USB head) to MiraScreen dongle main body.

Step 2: Plug the MiraScreen into the HDMI port of your TV and switch to the right input source.

Step 3: Plug USB cable into an external USB power adapter.

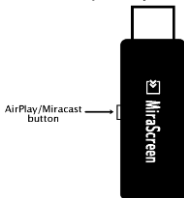
Note: 1 Amp current supply is highly recommended for reliable Wi-Fi connection.

Step 4: You should see the main MiraScreen page after power on

Hardware Button

1) Mode Switching: Switch between AirPlay and Miracast Mode

2) 2.4GHz/5GHz WiFi Switching: Press 5 seconds for changing the WiFi frequency band.



For iOS(iPhone/iPad) AirPlay Mirroring



Step 1: Switch to Airplay mode by pressing button

Step 2: Get SSID and password on screen

Step 3: Establish WiFi connection between iOS device and MiraScreen.

Step 4: Turn on Airplay and select MiraScreen's SSID.

MiraCast for Android



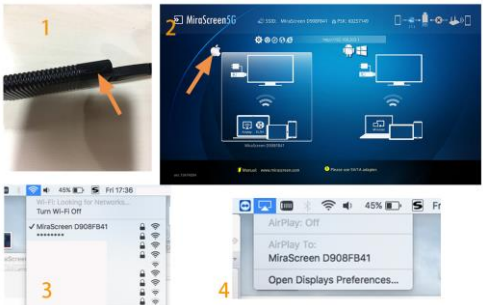
Step 1: Switch to Miracast mode by pressing button

Step 2: Miracast mode ready

Step 3: Find the Miracast function on your Android device (such as screen mirroring/miracast/smart view).

Step 4: Establish Miracast connection between Android device and MiraScreen.

AirPlay Mirroring for Mac OS X



Step 1: Switch MiraScreen Dongle to the Airplay/DLNA mode, then connect your Mac to MiraScreen Dongle via WiFi (SSID should be MiraScreen ###, and read the 8-digit password/PSK on screen).

Step 2: Switch on AirPlay of your Mac

MiraCast for Windows

Step 1: Switch to Miracast mode by pressing button

Step 2: for Window 10, launch the “Windows Start Menu > Settings > Connected devices > Add a printer or scanner”, and then search for MiraScreen Dongle. After that you may start to mirror.

For Windows 8.1, launch the “Windows Start Menu > Settings > PC and devices > Devices > Add a device”, and then search for MiraScreen Dongle. After that you may start to mirror.



Switch MiraScreen 2.4G/5G band

Step 1: Default 2.4GHz band

Step 2: Press the button for about 5s to switch to 5GHz band.

Step 3: Switch to 5GHz band successfully

Step 4: Establish 802.11ac 5GHz WiFi connection between device and MiraScreen (Note: please make sure your phone supports 8011.ac 5G standard)



Step 1: Switch to Airplay mode by pressing button, and then get the IP address of your MiraScreen on screen.

Step 2: Use browser on your device to access the IP address of MiraScreen, and select your WiFi router.

Step 3: Enter password.

Step 4: Connect to your WiFi router.

Setting and Firmware Upgrade

After connected with MiraScreen, an IP address will be shown on setup screen. Please launch browser on your devices (iOS/Androd/Mac/Windows etc.) and then enter the IP address accordingly (ex: 192.168.203.1)

Internet: Setup the router connection for your MiraScreen. (Note: The connection between MiraScreen and your device may be disconnected when you switch to router connection)

Language: Change the language of MiraScreen

Password: Change the password of MiraScreen

Default Mode: Select AirPlay or Miracast as boot up default mode

Resolution: Change output resolution of MiraScreen

Upgrade: upgrade the firmware of MiraScreen.

Note: Required Internet connection on your MiraScreen Dongle. **IMPORTANT!** Please upgrade to the latest version in order to compatible with up-to-date devices.

