

# Warranty

eGeeTouch® smart padlock is warranted to the original purchaser to be free from defects in workmanship and material. JSB Tech Pte Ltd, will, at its option, repair or replace any defective part which may malfunction under normal and proper use within a warranty period of 1 (one) year from the date of purchase. This one year warranty clause is NOT applicable to European Union (EU) member states. Purchases made in EU member states will be covered by the existing consumer laws across the European Union, which provide statutory warranty rights in addition to the coverage of one year warranty period. The foregoing warranty shall not apply to defects resulting from misuse, abuse or transfer by the Buyer, Buyer-supplied software or interfacing, unauthorized modification or operation outside of environmental specifications for the product. JSB Tech Pte Ltd does not warrant that the operation of the instrument software, or firmware, will be uninterrupted or error free.

The exclusive remedy under any and all warrants and guarantees, expressed herein, and we shall not be liable for damages from loss or delay of equipment uses, consequential, or incidental damage. No other warranty is expressed or implied. JSB Tech Pte Ltd specifically disclaims the implied warranties of merchantability and fitness for a particular purpose.

# Limitation of Liability

In no event shall DIGIPAS TECHNOLOGIES INC., (hereinafter, "the Company") be liable to you or any third party for any indirect, special, incidental, exemplary or consequential damages of any kind resulting from any breach of warranty or from the performance or use of the product. This includes without limitation: property damage, loss of value of the product or any third party products that are used with the product, or loss of use of the product or any third party products that are used with the product, even if the Company has been advised of the possibility of such loss or damages. The Company's total cumulative liability arising from or related to the product, whether in contract, tort (including negligence) or otherwise, shall not exceed the amount actually paid by you for the product. Some states and/or jurisdictions do not allow the exclusion or limitation of incidental or consequential damages, so the above limitations or exclusions may not apply to you. If any limitation of liability shall be deemed invalid by any applicable law, then the limitations of liability set forth above shall apply to the maximum extent permitted under applicable law.

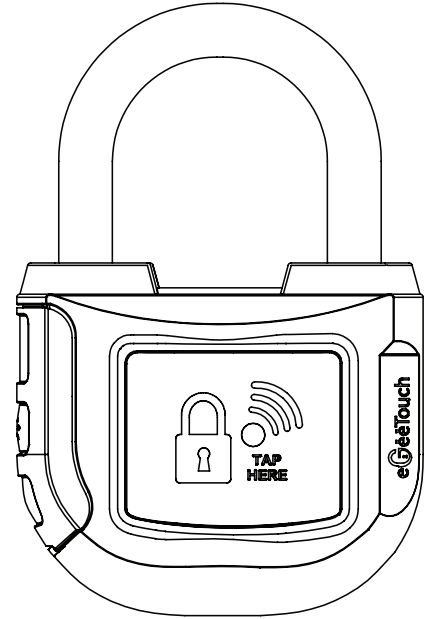
# Support

You can find a complete Troubleshooting Guide, Demo Videos & FAQ online at [www.egeetouch.com/support](http://www.egeetouch.com/support).

Distribute by:

Manufactured by : JSB TECH Pte Ltd

# SMART PADLOCK QUICK START GUIDE

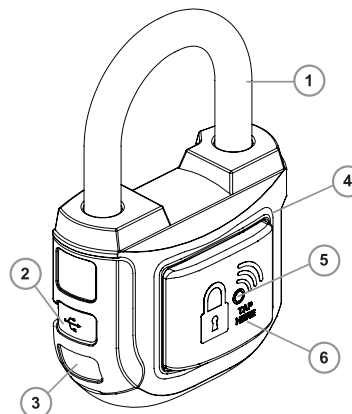


U.S Pat. No.: US 9,121,199 B2 & D 722,485 S

## Model GT2002

This Quick Start Guide contains only the basic & essential information in consideration of the environment. A complete guide is available online in softcopy at [www.egeetouch.com/support](http://www.egeetouch.com/support)

# Product overview



- 1. Shackle
- 2. USB 2.0 Port for emergency power
- 3. Battery Cover
- 4. Body
- 5. LED Indicator
- 6. NFC Receptor Area

DIGIPAS TECHNOLOGIES INC.  
[www.egeetouch.com](http://www.egeetouch.com)



Like us on Facebook  
[www.facebook.com/egeetouch](http://www.facebook.com/egeetouch)



Visit our Youtube  
[www.youtube.com/egeetouch](http://www.youtube.com/egeetouch)

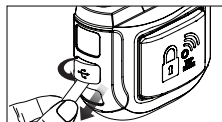
## Technical Specification

Shackle Diameter	: 8.6mm
Shackle Vertical Clearance	: 33mm
Shackle Horizontal Clearance	: 35mm
Power	: A76/LR44 Battery 1.5V (2 Pcs) or USB external source (backup)
Operating temperature	: -10°C ~ 50°C
Storage temperature	: -20°C ~ 60°C

Note: Product specifications are subjected to change without prior notice

# 1. Set-up

Remove battery keeper as shown below.



Note:

You may refer to [www.egeetouch.com/support](http://www.egeetouch.com/support) for video on step by step Set Up guides, updated quick guide, Operating Instruction & other demo videos on smart lock features.

## How to setup & pair your smartphone

1. Use your smartphone to download & Install "eGeeTouch Manager" App from Apple App store and/or Google Playstore.
2. Launch eGeeTouch App & follow on screen instructions to sign up for a new account.
3. Upon signing up, login with your email address & password.
4. Select "+" sign at the bottom of the screen & follow on-screen instruction. A pop up menu congratulates your success of pairing.
5. Select the newly added smart lock from dashboard & press the shackle firmly against the base once. A pop up menu indicate to change lock's name & primary password.
6. Key in & submit your preferred lock's name & primary password respectively. Hide onscreen keyboard by pressing enter. You are now all set.



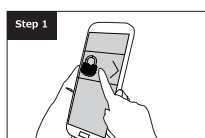
Note: Do not re-use the Embedded Primary Password as shown which is reserved for security purpose.

EMBEDDED PRIMARY PASSWORD

# 2. Operating Instructions

## Using smartphone to unlock

Note: eGeeTouch Manager application software is compatible with any Bluetooth-enabled smartphone running iOS 8.0 & above and Android OS 4.4 & above.



Launch eGeeTouch App on your paired smartphone. Select smart padlock icon

Note:

You are required to pair your smartphone and smart padlock first before attempting step 1.



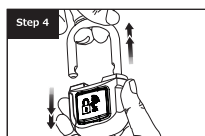
Press the shackle ① firmly against the base once. The LED light ⑤ flashes in red accompanied by an audible buzzer sound.

The device is now ON & ready to pair with your smartphone.



Tap the lock icon in your mobile app to unlock your smart padlock.

The lock icon in your app changes & turn green indicating successful unlocking of smart padlock



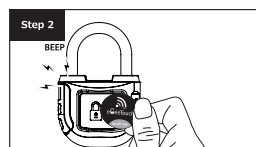
Pull off the shackle against smart padlock's body ④ to release the shackle.

## Using NFC smart fob to unlock

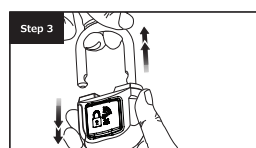
Note: No installation of eGeeTouch manager app is required



Press & hold the shackle ① firmly against the base for ~2-3 sec until the LED light ⑤ flashes in green accompanied by an audible buzzer sound. Release hold. The device is now ON and ready to detect any paired-NFC smart fob.

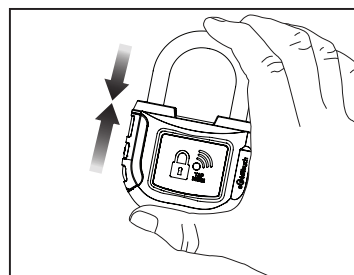


Tap a paired-NFC smart fob at the indicated NFC receiver area ⑥. An audible buzzer sound and green flashing LED light indicate a successful unlocking of the Smart Padlock. Any unpaired-NFC smart fob will be denied access, indicated by a red flashing LED light & multiple buzzer sound.



Pull off the shackle against smart padlock's body ④ to release the shackle.

## How to lock smart padlock



Press the shackle firmly against the base once. The LED light will flash in red accompanied by multiple buzzer sound, indicating that the smart padlock is securely locked.

## How to change lock's name & primary password

1. Pair Smart Lock with your smartphone.
2. Select the setup icon in your mobile app's function menu found at the bottom of the screen.
3. Follow on-screen instructions.

## App features

To explore other smart features, select these icons below in your mobile app. Please refer to [www.egeetouch.com/support](http://www.egeetouch.com/support) for detailed video illustrations of the smart features



Lock / Unlock



Smart Watch

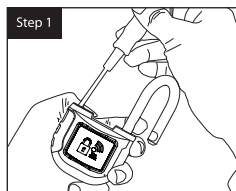


Audit Trails

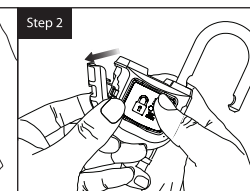


Setup

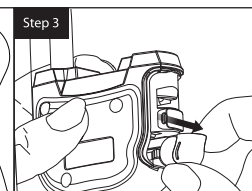
## How to install/replace batteries



Remove the battery compartment's screw using Phillips head (point 0) screwdriver.



Remove the battery cover as shown on the direction of opening.



Pull out battery tray from the battery compartment. Install 2 pieces of A76/LR44 batteries with the battery positive (+) side facing up.

Note: Please refer to "Product Overview" for ②, ③, ⑤, ⑥ markers.

## Using external USB to power up the lock

eGeeTouch survives over 2,000 locking/unlocking cycles. It notifies you when battery run low through your smartphone & blinking LED. When batteries finally run out, use a standard external USB power source (e.g. from your Laptop PC or USB power bank) to power up your smart lock, and then proceeds with unlocking and to replace batteries.

**⚠ USB power source does NOT charge batteries of the lock.**

