

# Split-Ender<sup>®</sup> PRO 2

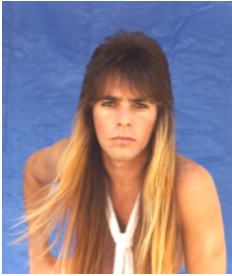
CORDLESS SPLIT END HAIR TRIMMER

**ORIGINAL  
INSTRUCTION MANUAL**  
(Consumer English Version)



**SNIPS THE ENDS, NOT THE LENGTH**

**TALAUERA**<sup>™</sup>  
HAIR PRODUCTS, INC.



Victor C. Talavera  
1987



Victor C. Talavera  
Inventor

Hi,

My name is Victor C. Talavera, the Inventor of the Split-Ender. I used to have long hair and I spent about 4 hours in two days cutting my split ends every other month. I ran my hair through my fingers and with a pair of scissors I trimmed one by one and it was a nightmare! So I decided to invent an easy to use hair tool that can do the same thing for me, but in just minutes.

The Split-Ender is a unique and revolutionary worldwide patented invention that is specially designed to guide the hair ends into the blades in a straight motion, trimming the very end of the hair strand by 1/4 inch (0.6CM) while preserving the length of the hair. Thanks to the amazing Split-Ender invention, now men and woman can grow their hair longer, reach desired length faster, more beautiful and healthier than ever before.

I want to thank you for your loving support for the Split-Ender PRO2 and Talavera Hair Products, Inc.!

Split-Ender PRO2! The New Revolution!

Yours truly,

Victor C. Talavera  
Inventor / President  
Talavera Hair Products, Inc.

# TABLE OF CONTENTS

	Page
GETTING TO KNOW YOUR Split-Ender PRO2 .....	2
PARTS LIST .....	2-3
IMPORTANT SAFETY INSTRUCTIONS .....	4
RECHARGEABLE BATTERY HANDLE DETACHMENT & INSTALLATION .....	5
1/4" (6mm) TRIM SETTING & PROPER USE .....	6
HAIR PREPARATION .....	7
BEGIN TREATMENT .....	8-10
QUICK HAIR CHAMBER CLEAN UP .....	11
BLADE REPLACEMENT .....	12
DISINFECT, CARE & MAINTENANCE .....	12-13
IMPORTANT NOTES & DISCLAIMER .....	14

## SPLIT-ENDER® PRO CORDLESS SPLIT END TRIMMER

Manufactured by **TALAVERA HAIR PRODUCTS, INC.**

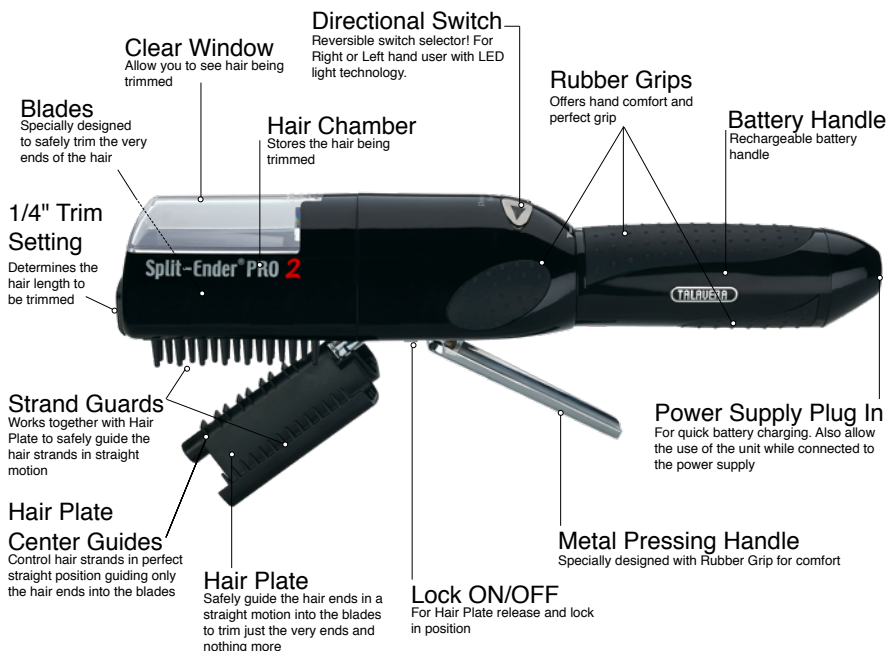
2710 Alpine Blvd. Ste. O-136, Alpine, CA 91901

Engineered in U.S.A. & Made in P.R.C.

[www.splitenderpro.com](http://www.splitenderpro.com)

**WARNING:** The Split-Ender® was created by Victor C. Talavera and it is protected by law under U.S. Patent # 6,588,108, U.S. Patent # 7,040,021, U.S. Patent # 9,597,811, European Patent # 3062972, European Design Registration # 003247527-0001, UK EP-Patent # 1,381,496, Canada Pat. # 2,444,497, Australia Pat. # 2015213618, China & Hong Kong Pat. # ZL 02 8 08380.6, Taiwan and S. Korea Pat. Pending. Other Worldwide Patents & Trademark Pending!  
Split-Ender®, Talavera™, Surgy-Trim™ System and STS™, Split-Ending The Hair™, Miracle Pearl™ are trademarks of Talavera Hair Products, Inc.

# GETTING TO KNOW YOUR SPLIT-ENDER PRO2



## PARTS LIST

Your Split-Ender PRO2 also comes



- **Carrying Bag:** Safely transport your Split-Ender PRO2 and accessories everywhere your life takes you.



- **Cleaning Brush:** Use Cleaning Brush to clean the hair off the blades and the housing.



- **Power Adaptor:**  
Input: 100-240VAC 50/60Hz 0.2A  
Output: 5VDC 0.6A 4W  
For a regular battery charge plug in your Split-  
Ender PRO for 3 to 4 hours and unplug when  
finished.

# IMPORTANT SAFETY INSTRUCTIONS

When using an electrical appliance, basic precautions are required to always be followed, including the following:

Read all instructions before using the Split-Ender PRO2.

**DANGER** – To reduce the risk of electric shock:

1. Do not reach for an appliance that has fallen into water. Unplug immediately from electrical outlet.
2. Do not use while bathing or in a shower.
3. Do not place or store appliance where it is able to fall or be pulled into a tub or sink. Do not place in or drop into water or other liquid.
4. Except when charging, always unplug this appliance from the electrical outlet immediately after using.
5. Unplug this appliance before cleaning.

**WARNING** – To reduce the risk of burns, fire, electric shock, or injury to persons:

1. Use this appliance only for its intended use as describe in this manual. Do not use attachments not specified by the manufacturer.
2. Never operate this appliance when it has a damaged cord or plug, when it is not working properly, after it has been dropped or damaged, or after it has been dropped into water. Return the appliance to a service center for examination and repair.
3. Keep the cord away from heated surfaces.
4. Never drop or insert any object into any opening.
5. Do not use outdoors or operate where aerosol (spray) products are being used or where oxygen is being administered.
6. Do not use this appliance with a damaged or broken comb, as it has the potential to result in facial injury.
7. Always attach plug to appliance first, then to outlet. To disconnect, turn all controls to off position (e.g. "0") then remove plug from outlet.
8. Plug charger directly into receptacle – do not use an extension cord.
9. Unplug charger before plugging or unplugging appliance.
10. Warning: Keep the appliance Dry.
11. For adult use only, NOT for use by children! This appliance can be used persons with reduced physical, sensory or mental capabilities or lack of experience and knowledge if they have been given supervision or instruction concerning use of the appliance in a safe way and understand the hazards involved.

Children should be supervised to ensure that they do not play with the appliance.

**SAVE THESE INSTRUCTIONS**

# RECHARGEABLE BATTERY HANDLE DETACHMENT & INSTALLATION

1- Hold the Split-Ender PRO2 with one hand at the middle section of the main unit while holding the Battery Handle with the other just as shown on Fig. 1.



Fig. 1

2- Now gently rotate the Battery Handle to the left until you feel a snap. That is the feel of the Battery Handle unlocking. (See Fig. 2)



Fig. 2

3- Pull the Battery Handle away from the main unit. It's that simple! (See Fig. 3)



Fig. 3

**FOR BATTERY DISPOSAL:** The batteries must be removed from the appliance before it is scrapped. The appliance must be disconnected from the supply mains when removing the battery. The batteries are to be disposed of safely.

4- You can now see the Battery and Main Unit contacts. (See Fig. 4)



Fig. 4

**BATTERY HANDLE INSTALLATION:** To Install the Battery Handle back in to the main unit, just repeat the same steps in reverse.

# TRIM SETTING INSTALLATION & PROPER USE

**1/4" (6mm) TRIM Setting:** The 1/4" Trim Setting will trim approximately 1/4" off the end of the hair.



Fig. 1

**NOTE!** Unlike the regular Split-Ender PRO the Split-Ender PRO2 comes with the 1/4" (6mm) TRIM Setting already fixed to the unit.

This TRIM setting can not be removed nor replaced.

**IMPORTANT! DO NOT TRY TO REMOVE THE 1/4" (6mm) TRIM SETTING AS YOU MAY BREAK OR DAMAGE YOUR SPLIT-ENDER PRO2.**



# HAIR PREPARATION

1- Wash the hair to make sure it is free from natural oils and products solution.

2- Completely blow dry the hair thoroughly before using your Split-Ender PRO.

**IMPORTANT:** THE SPLIT-ENDER PRO2 WILL ONLY WORK ON CLEAN AND FULLY DRY HAIR.

**WARNING!** Hair must be FREE from natural oils, hair spray, gels, mouse or any styling products on the hair as it will cause the hair to stick together and it will cause it to be unevenly trimmed. Always Clean and fully dry the hair before using the Split-Ender PRO2. The concept is that a clean and fully dry hair allows each hair strand to move freely and INDIVIDUALLY from one another in order to enter into the blades in a straight motion and be individually trimmed at the very ends.

The Split-Ender PRO2 is specially designed to only trim the very end of the hair strand which can only enter the blades. It trims 1/4" (6mm) with the 1/4" TRIM Setting already fixed to the unit.

3- Comb the hair completely free of tangles before using the Split-Ender PRO2 just to avoid hair pulling. The Split-Ender PRO2 should run through your hair nice and easy.



WASH THE HAIR



BLOW DRY THE HAIR



COMB HAIR FREE OF TANGLE

4- Divide the hair in the middle in two half sections. Clip away one half section from the back towards the front, to keep it out of the way while treating the other side. (Hair Clip Not Included) Repeat it on the opposite side after treating the first half section. Now you are ready to begin treatment.



CLIP AWAY ONE SIDE

## BEGIN TREATMENT

**Step 1.** Select a small, "THIN" section of hair. Spread it to a "THIN" layer before placing it on top of the hair plate GUIDES and comb it "FREE OF TANGLES". This will allow the hairs to freely run through the hair plate and avoid getting pulled.

**Step 2.** Open the hair plate by sliding the Lock ON to the Lock OFF position located underneath the unit. (See Fig. 2)

**Step 3.** Select the ARROW pointing to the floor and press the button. A green light will turn ON letting you know that the unit is activated and ready to go. Hint! The motor will only turn ON when pressing the Pressing Handle. Remember, the Directional Switch is reversible, so as you switch from one hand to another, you also need to reverse the directional switch always with the ARROW pointing to the floor. (See Fig. 3)

**Step 4.** Place the "THIN" section of hair on top of the hair plate CENTER GUIDES (See Fig. 4), no wider than the width of the center guides & no thicker than the height of the center guides.

**Step 5.** Gently squeeze the hair plate Pressing



Fig. 1



Fig. 2



Fig. 3



Fig. 4

Handle until unit activates. Begin hair treatment procedure. Starting at the top while holding the section of hair with one hand and the Split-Ender PRO2 with the other, work towards the ends and slowly comb the hair with the Split-Ender PRO2 all the way to the bottom. Use a slow, even motion, just like you would use with a flat iron or hair brush. Repeat 3 times per section! (See Fig. 5)



Fig. 5

**Note: If you feel that is pulling the hair then you either have too much hair on the hair plate or the hair is not free of tangles. Take some hair out, brush it and try again.**



Fig. 6

**Step 6.** Treat every section of hair 3 times per section and continue with the same amount of treatments per section to insure an even trim all around the head of hair by the time that you are done. After you finish every section of hair, clip it to the side separating it from the untreated hair. (See Fig. 6) Select another small, "THIN" section of hair and repeat treatment until that working side is finished. Repeat on the other side until both sides are completed.



Fig. 7

From time to time while you are treating the hair, you will see the Hair Chamber housing getting full of little bits of hairs. (See Fig. 7) Stop for a minute and empty the Hair Chamber pouring it over a sheet of paper or counter top as you go. (See Fig. 8) This insure that the blades housing



Fig. 8

is clean during treatment as you go for a better Split-Ender PRO2 performance. (Please go to "QUICK HAIR CHAMBER CLEAN UP" section for how to remove hair off the Hair Chamber safely).

It is a good time to see the little bits of hair being trimmed but more importantly... to feel how soft and silky is that section of treated hair. Run it through your fingers and feel the difference. It should feel healthy and silky as you have removed the dead, dry and split ends from your hair and all this while preserving the length. Making it instantly soft and silky. It is impressive!

After you have completed the entire head of hair, comb it thoroughly and finish it with a capsule of our amazing Miracle Pearl by Talavera (**NOT INCLUDED**). The Ultimate Hair Salon Restoration Treatment. Pour half of a capsule first on the palm of your hands and spread it around. Then apply Miracle Pearl to the hair evenly starting at the top and moving down to the ends. It may feel oily at first but the hair will absorb the Miracle Pearl bringing back its natural shiny look and elasticity. Comb the hair again thoroughly and apply the rest of the Miracle Pearl more towards the ends to seal and rejuvenate.

Now you will enjoy the new soft, silky and healthy head of hair. From now on you can enjoy growing your hair Longer, reaching the desired length Faster, more Beautiful and Healthier than ever before. Thanks to your new Split-Ender PRO2!



## *New!* Split-Ender<sup>®</sup> PRO2 STS<sup>™</sup>

New Surgi-Trim<sup>™</sup> System Technology safely trims the ends of the hair where damaged hair ends and split ends starts while preserving the beautiful, long, healthy hair, insuring that all the ends (split, damaged or dry) are trimmed and healthy.

# QUICK HAIR CHAMBER CLEAN UP

1- With the Hair Plate in the open position, hold by the Handle with one hand while gently pressing down on the Clear Window ARROW Mark just as shown on Fig. 1.



Fig. 1

2- Proceed to slide the Clear Window off the Hair Chamber or Blade Housing. (See Fig. 2)



Fig. 2

3- On a sheet of paper or counter top dump the hair pieces from the Hair Chamber! (See Fig. 3)



Fig. 3

4- Using the Cleaning Brush provided, brush out all of the hairs from the Blade and Housing. Note that the Cleaning Brush hairs may get stuck on the blades sharp edges so do it carefully. (See Fig. 4) After you have finished, install the Clear Window back to the housing. Hint! Unit will not turn ON if clear window is not installed due to a internal safety switch!



Fig. 4

# BLADE HOUSING REMOVAL & MAINTENANCE AFTER EACH USE

## IMPORTANT!

1- With the Hair Plate in the open position and the Clear Window removed, hold by the Motor Housing (Middle Section) with one hand while with the other hand hold the Blade Housing and gently open one side and then pull from each other until Blade Housing is fully detached just as shown on Fig. 1 and 2.



Fig. 1

2- Now that you have detached the Blade Housing from the main unit (See Fig. 2), clean it, disinfect it and install it back together when finished. Apply a single drop of clipper oil (or 3-in-1 Oil) to each sides of the blades. Turn ON the unit for few seconds and now you can stored it.



Fig. 2

## HOW TO DISINFECT

1- You can disinfect your Split-Ender PRO2 every time you use it. You can use Spray Disinfectant. Follow their instructions. Based on normal procedures you should always clean all parts free of hair before you apply any disinfectant to them. Leave it on for at least 10 minutes before it is ready to use again. (See Fig. 1)



Fig. 1

2- Reverse the Blade Housing and spray Disinfectant to the entire Blade Housing, Brushes and Blade area. (See Fig. 2)

**IMPORTANT!** Make sure to always clean all the hairs from the gears and in between the **Activating Metal Contacts** as it can cause the **MOTOR NOT to TURN ON.**



Fig. 2

3- Also apply Spray Disinfectant to the Hair Plate and Spacers. (See Fig. 3) It is always good to have a sanitised piece of cloth that you can use to clean any residue off from all parts after the 10 minutes of Disinfectant Solution time frame is over.



Fig. 3

4- You can also lay all parts that make contact with the hair down on a towel (after cleaning all hair off all parts) and Spray Disinfectant directly to each part if you don't want to have contact with the Spray Disinfectant solution on your hands. It is always recommended to wash and disinfect your hands with soap and hand sanitiser to prevent passing any germs from your hands back to any parts or the Split-Ender PRO2 when assembling it back together.

5- To extend the life of your cutting blades always keep it clean and follow the steps above.

# IMPORTANT NOTES & DISCLAIMER

**1- Do not use the Split-Ender PRO2 in one specific section more than another,** since you may cause the hair to be trimmed unevenly. We recommend 3 treatment per section all the way around your head of hair. More treatments may be required base on hair damaged condition.

**2- Do not use the Split-Ender PRO2 without TRIM Setting.** Too much hair can enter the blade all at once and it may cause damage to the hair. These blades are not designed to take a large amount of hair all at ones. It is recommended to use a small thin section of hair on the hair plate.

**3- Recommended hair maintenance treatment every 4 to 6 weeks.** However, if your hair is extremely damaged from numerous color treatments, hot styling tools, etc., earlier treatment may be necessary.

**4- HAIR PULLING:** If you feel you are "pulling" the hair, you may have too much hair on the hair plate. Simply remove the section of hair, comb free of tangle and try again with a smaller and thinner section of hair.

**5- Works best in straight or wavy hair.** If you have curly or freeze hair... you could properly straighten your hair before using the Split-Ender for best results. Different results may varied with different type of hair.

**6- Keep out of the reach of children.**

**DISCLAIMER:** Talavera Hair Products, Inc. and its employees, inventor, agents, dealers or distributors are not responsible in any way for any damages cause by any of our products if the products are used otherwise as intended and as stated in this Instruction Manual.

## SPLIT-ENDER® PRO CORDLESS SPLIT END TRIMMER

Manufactured by **TALAVERA HAIR PRODUCTS, INC.**

2710 Alpine Blvd. Ste. O-136, Alpine, CA 91901

Engineered in U.S.A. & Made in P.R.C.

**[www.splitenderpro.com](http://www.splitenderpro.com)**

**WARNING:** The Split-Ender® was created by Victor C. Talavera and it is protected by law under U.S. Patent # 6,588,108, U.S. Patent # 7,040,021, U.S. Patent # 9,597,811, European Patent # 3062972, European Design Registration # 003247527-0001, UK EP-Patent # 1,381,496, Canada Pat. # 2,444,497, Australia Pat. # 2015213618, China & Hong Kong Pat. # ZL 02 8 08380.6, Taiwan and S. Korea Pat. Pending.  
Other Worldwide Patents & Trademark Pending!  
Split-Ender®, Talavera™, Surgy-Trim™ System and STS™, Split-Ending The Hair™, Miracle Pearl™ are trademarks of Talavera Hair Products, Inc.