

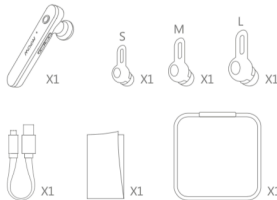
MPOW
Model: BH206A

WIRELESS EARPHONE

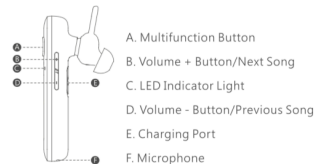
User Manual



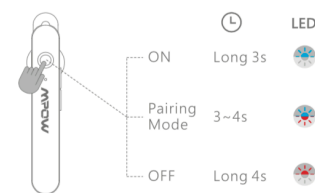
Package



Diagram



Power ON / OFF



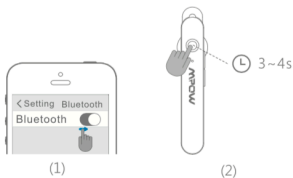
FCC STATEMENT

Operation is subject to the following three conditions:
(1) This device may not cause harmful interference, and
(2) this device must accept any interference received, including interference that may cause undesired operation.
(3) This device has been evaluated to meet general RF exposure requirement. The device can be used in portable exposure condition without restriction.
Note: This equipment has been tested and found to comply with the limits for a Class B digital device, pursuant to part 15 of the FCC Rules. These limits are designed to provide reasonable protection against harmful interference in a residential installation. This equipment generates, uses and can radiate radio frequency energy and, if not installed and

used in accordance with the instructions, may cause harmful interference to radio communications. However, there is no guarantee that interference will not occur in a particular installation. If this equipment does cause harmful interference to radio or television reception, which can be determined by turning the equipment off and on, the user is encouraged to try to correct the interference by one or more of the following measures:

- Reorient or relocate the receiving antenna.
- Increase the separation between the equipment and receiver.
- Connect the equipment into an outlet on a circuit different from that to which the receiver is connected.
- Consult the dealer or an experienced radio / TV technician for help.

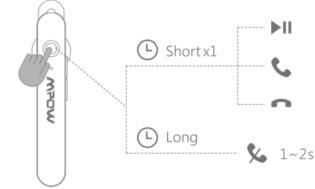
How To Pair



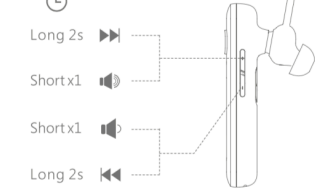
Long press the Multifunction button (MFB) for 3-4s in power off mode to enter the pairing mode, then search bluetooth device and select "Mpow EM7" to connect.
Drücken Sie lange die Multifunktionstaste (MFB) für 3-4S beim ausgeschalteten Modus, um den Paarungsmodus einzutreten, dann suchen Sie das Bluetooth-Gerät und wählen Sie "Mpow EM7" für vous connecter.
Appuyez longuement sur le bouton Multifonction (MFB) pour 3-4s en mode d'éteindre pour entrer dans le mode d'appariement, puis recherchez l'appareil Bluetooth et sélectionnez "Mpow EM7" pour vous connecter.
Mantenga presionado el botón multifunción (MFB) durante 3 a 4 segundos en el modo de apagado para ingresar al modo de sincronización, luego busque el dispositivo bluetooth y seleccione "Mpow EM7" para conectarse.

Premere a lungo il pulsante multifunzione (MFB) per 3-4 secondi in modalità spegnimento per accedere alla modalità di accoppiamento, quindi cercare il dispositivo Bluetooth e selezionare "Mpow EM7" per connettere.
多機能ボタン(MFB)を3-4秒間押してペアリングモードに入り、Bluetooth デバイスを検索し、「Mpow EM7」を選択して接続します。

Play / Pause / Answer / Hang Up / Reject



Volume Control / Music Control



Charge Battery

