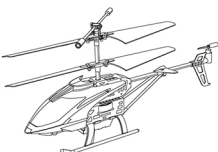


**KNOW YOUR JX01**

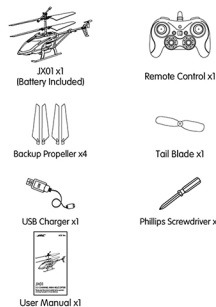
JX01 Helicopter applies 2.4G remote control system to enable multiple players compete without interference. It is easy to operate via remote control to control functions such as flying, flips and rolls and altitude hold etc.


**JX01**  
**3.5 CHANNEL MINI HELICOPTER**

\*Please read this manual carefully before operation and keep it properly for future reference.

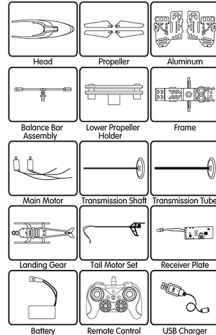
- |               |                 |
|---------------|-----------------|
| ① Balance Bar | ③ Charging Port |
| ② A Propeller | ④ Landing Gear  |
| ③ B Propeller | ⑤ Power Switch  |
| ④ Tail Blade  | ⑥ Battery       |

1

**INCLUDED ACCESSORIES**

**Notes:**

Please check the number of accessories carefully (as shown above). Please provide proof of purchase and contact the store for replacement if any missing parts.

2

**OPTIONAL ACCESSORIES**

**Notes:**

There is a chance that accessory is broken. If so, please contact local retailer and purchase new accessory items from them.

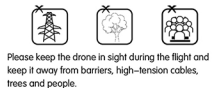
3

**PRE-FLIGHT PREPARATION**
**1. Flight Environment**


Indoor: Spacious spaces away from barriers, crowds or pets are preferred.



Outdoor: Sunny, windless and breezy weathers are preferred.



Please keep the drone in sight during the flight and keep it away from barriers, high-tension cables, trees and people.

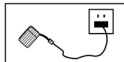


Do not fly in extreme environment, such as hotness, coldness, strong wind or heavy rain.

4

**2. Battery Charging for Drone**


A. Connect to computer via USB port to charge the helicopter.



B. Connect the USB port to the charger and plug into a wall socket.

**Notes:**

- Turn the power switch to the "OFF" position before charging.
- Take the battery out of the battery compartment and connect it with USB charging cable.
- The USB's indicator light turns solid when it starts to charge and turns off when the charging completes. It has a charging time of 40 minutes and gives a flying time of 4 minutes.
- The drone's bottom LED light turns up when the drone battery is low.
- Use original charger for battery charging. Chargers other than the original one might cause damage to the battery.

5

**▲ Battery Instructions**

There is a certain risk when using lithium battery. It may cause fire, body injury or property loss. Users must be aware of the risks and take full responsibility of using battery improperly.

If battery leakage occurs, please avoid contacting your eyes or skin with electrolyte. Once it happens, please wash your eyes with clean water and seek medical care immediately.

Please remove the plug immediately if you sense any peculiar smell, noise or so.

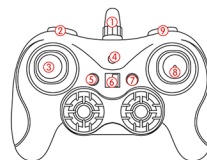
**Battery Charging**

- Please use the charger from original factory to ensure your safe usage.
- Do not charge distant or outwork battery.
- Do not over charge battery. Please unplug the charger once fully charged.
- Do not charge the battery next to inflammables, such as carpet, leather floor or wood furniture or on the surface of electro-conductive objects.
- Please always keep an eye on the battery when charging.
- Do not charge battery which not cool down yet.
- The charging temperature should be between 0°C to 40°C.

**Battery Recycling**

Do not dispose the battery as daily rubbish. Please familiarize yourself with the local garbage disposal method and dispose it according to the special requirement.

6

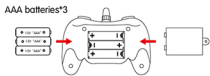
**KNOW YOUR REMOTE CONTROL**
**1. Operation Board of Remote Control**


- |   |                                 |
|---|---------------------------------|
| ① Antenna of 2.4GHz Wireless Sensor   | ⑥ Power Switch                  |
| ② Left Fine-tuning  | ⑦ Light Control                 |
| ③ Left Joystick (Ascend/Descend)  | ⑧ Backward/Turn Left/Turn Right |
| ④ Power Indicator   | ⑨ Right Fine-tuning             |
| ⑤ Short Press   |                                 |
| One-key Start/Short Press for One-key Landing/Long Press for Emergency Stop |                                 |

7

**2. Battery Assembly for Remote Control**

① Open the Remote Control Battery Cover  
Unscrew the screws on the battery compartment cover with a Philips screwdriver in order to open the cover.


**② Battery Assembling for Remote Control**


Open the cover of battery compartment, insert three AAA batteries (not included).

**Notes:**

- Ensure the polarity symbols on the batteries match the symbols inside the battery compartment.
- Do not mix new and old batteries.
- Do not mix different types of batteries.
- When the remote control's indicator light flashes, which indicates the remote control has low voltage, please replace with new batteries.

8

**PRE-TAKEOFF INSTRUCTIONS**

After the charging completes, put the drone on level surface and turn the power switch to the "ON" position. When the helicopter's LED light flashes, power on the remote control to proceed pairing. That the remote control's LED light turns from flashing to solid indicates the process of pairing has been successful and the helicopter is ready for other operations. (The process of pairing takes about 3 seconds.)

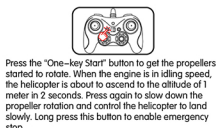
**1. Takeoff in Altitude Hold and Landing Instructions**


Illustrations of auto takeoff and landing.



The helicopter hovers at the altitude of 1 meter after takeoff.

9



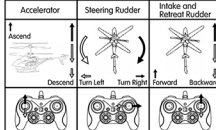
Press the "One-key Start" button to get the propellers started to rotate. When the engine is in idling speed, the helicopter is about to ascend to the altitude of 1 meter in 2 seconds. Press again to slow down the propeller rotation and control the helicopter to land slowly. Long press this button to enable emergency stop.

**Notes:**

When the helicopter hovers at certain altitude, toggle the left joystick upward or downward to control it to ascend or descend until it hovers at the desired altitude.

**2. Helicopter Operations**

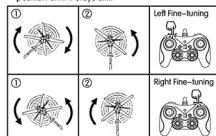
Press the "One-key Start" button to control the helicopter to ascend to the altitude of 1 meter and hover stably. Learn other operations to control the helicopter to turn left and right, ascend, descend, forward and backward.



10

**3. Trimming Helicopter**

- Press "One-key Start" button to control the helicopter to ascend to the altitude of 1 meter and hover stably.
- When the helicopter revolves clockwise, press the "Left Fine-tuning" button to adjust its position until it stays still.
- When the helicopter revolves counter-clockwise, press the "Right Fine-tuning" button to adjust its position until it stays still.



Feel free to attempt diverse flying skills once you have mastered the basic flight operations.

**WARNING**

- Please keep flying helicopter away from crowd. The incorrect installation, improper operation and electronic equipment malfunction will cause the damage or injury.
- Fly in correct according to the instruction strictly.
- Eachine shall not be held responsibility for any issue caused by improper operation or using.

11

- Recommendations for above 14 years old. Close supervision is required when using this equipment under the age of 14.

**PRECAUTIONS**

- If the battery voltage is low, either the helicopter or the remote control, please control the helicopter in a comparatively short range.
- Please operate the helicopter within a range of 10 meter radius otherwise it might cause control loss.
- If the helicopter's battery is low, the helicopter might fail to take off. Please immediately stop the operation and turn off the power to avoid damage to the battery. If you will suspend the device for some time, please take the battery out of the device and turn the power switch to the "OFF" position.
- Please immediately repair any damage or deformation once found. If severe damage has been caused, such as rotor breakage, please do not fly the helicopter to avoid bodily injury.
- Please remove the battery from the remote control if you will suspend the remote control for a long time in case of battery leakage or other damage to the product.
- Please operate the helicopter correctly and appropriately to avoid accidents such as crash or collision, which might minimize the product's lifespan.

12

- The helicopter applies 2.4G remote control system. Please ensure the battery has been fully charged before flight, and do not fly it at low battery state otherwise it might lose control.
- Please keep all the components in moisture-free places as this might lead to operation failure.
- Ensure thoroughly inspect the helicopter and all parts of components each time before flight to ensure flight safety.
- Do not fly the helicopter in strong light as this might affect the single reception of the remote control.
- Please power on the remote control before flight and power it off after flight at all times.


**Notes:**

- Store the helicopter and the controller in an environment where it is not exposed to moisture, dust, direct sunlight or extremely high or low temperatures.
- Use only the charger that is made for use with this model helicopter.
- Make a complete inspection before flying the helicopter. Do not let the helicopter fly out of sight when flying.
- Make sure that there is nobody using the same frequency as you at the same time in the room.

13

**FAQ**

PROBLEMS	CAUSES	SOLUTIONS
Remote Controller does not work.	Batteries installed improperly.  The batteries are weak.	Check and make sure that the batteries are installed by the right polarity.  Replace with new or freshly charged batteries.
Helicopter does not operate smoothly	Failure to match code from the helicopter and remote controller.  Lose control in the wind.	Turn off the helicopter and match code again.  Do not fly the helicopter in significant winds.
Helicopter does not fly high enough	Rotor speed is too low.  Helicopter is not fully charged.	Push up the left throttle.  Make sure the helicopter battery is fully charged.

14

**JRC TECHNICAL SUPPORT**

Dear Customer,

Thank you for choosing JRC product. Please visit JRC official website for more FAQ and information if there is any problem of using our product.

-Product Operation: Please visit JRC College for tutorial video or user manual.  
-Product Features: Please refer to product page description or product brochure.  
-After-sale Service: Please refer to conditions and terms of after-sale service.  
The final interpretation right belongs to all JRC.

Should you have any further questions, please visit JRC Online Feedback and leave your message.

Thank you again for your support!  
JIANJIAN TECHNOLOGY CO.,LTD.  
www.jrc.com

15