

APEMAN C370 Detailed User Guide

Contents

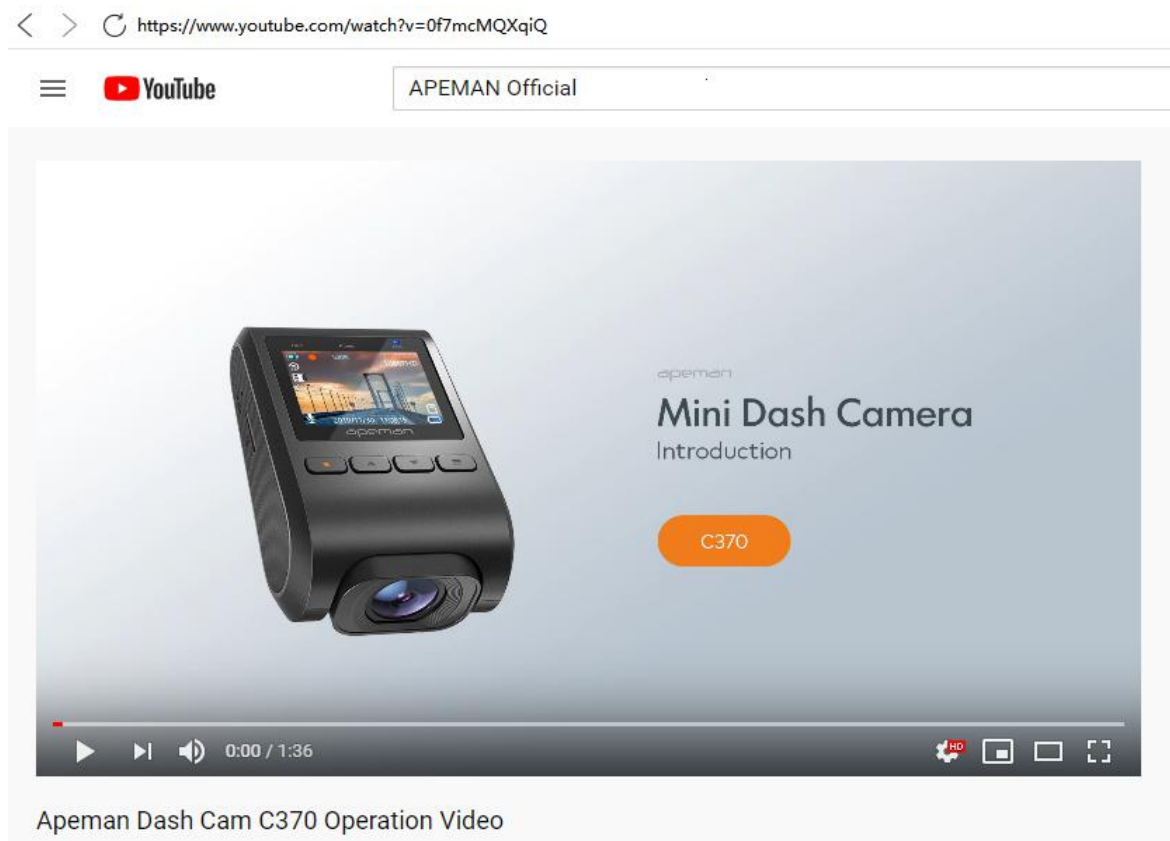
1. How to Install the Dash Cam C370.....	0 -
2. Prepare a Compatible Memory Card.....	1 -
A. Get a Right SD Card.....	1 -
B. How to Format a New SD Card Using Your PC.....	2 -
C. How to format the SD card on the Dash Cam.....	4 -
3. Getting to Know the Camera Body.....	5 -
A. Interfaces.....	5 -
B. Indicator Lights & Buttons.....	6 -
C. Icons on the Screen.....	7 -
4. Getting to Know the Operations.....	8 -
A. Camera Settings & System Settings.....	8 -
B. How to Start Recording.....	12 -
C. How to Stop Recording.....	13 -
D. How to Switch to Photo Mode.....	13 -
E. How to Check and Reply Videos on Dash Cam.....	15 -

Clarification: This document is a detailed operating instruction, which is different from the physical user manual in the box.

1. How to Install the Dash Cam C370

Please visit the APEMAN Official YouTube Channel and watch this video on how to install the Dash Cam. It will get you through setting up the C370 and will cover the basics.

- Channel: APEMAN Official
- Section: Dash Cam Tutorial
- Video Title: Apeman Dash Cam C370 Operation Video



1. Prepare a Compatible Memory Card

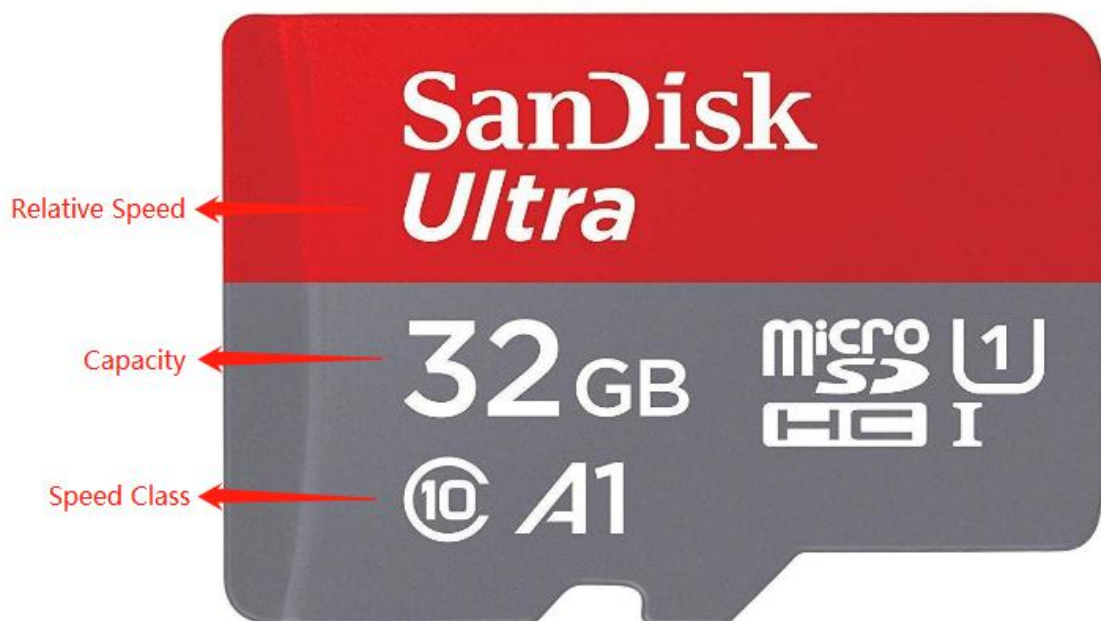
A. Get a Right SD Card

For best results, we recommend purchasing **microSD** cards from well-known memory cards brands (such as Samsung, Kingston, etc) for your Dash Cam. There are many memory cards manufacturers on

the market and each manufacturer uses slightly different file settings and systems that varies between batches. As such the performance of memory cards from non-known manufacturers cannot be guaranteed and recommended by us.

Requirements for card specifications:

- Type: microSD
- Capacity: 32GB is recommended; 64/128 GB can be used as long as the card can be formatted to FAT32 file system
- Speed Class: 10 or above



B. How to Format a New SD Card Using Your PC

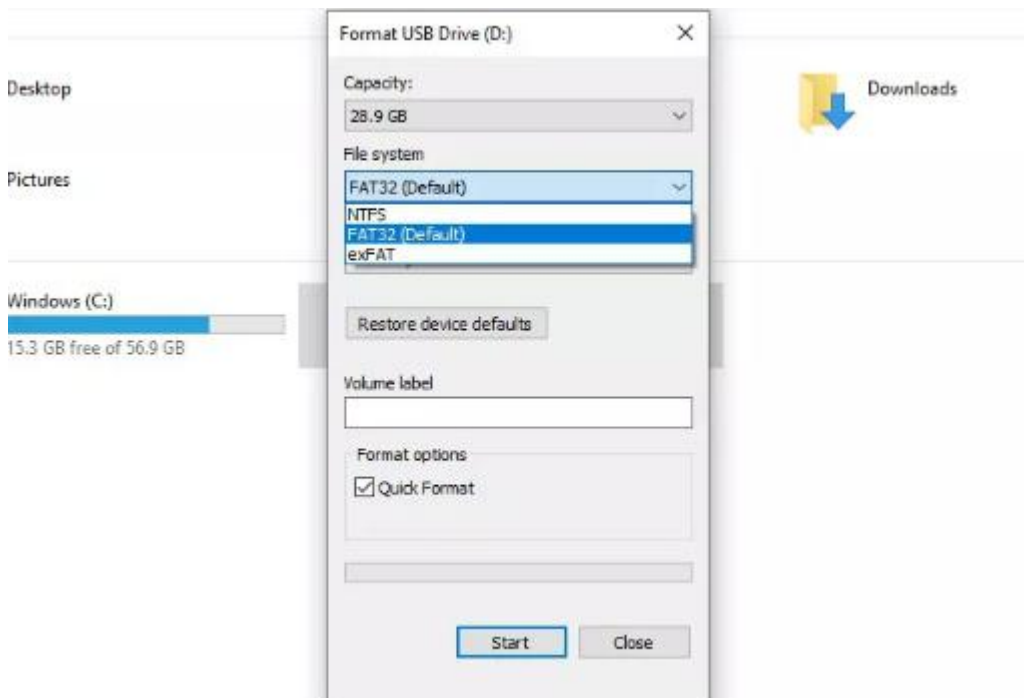
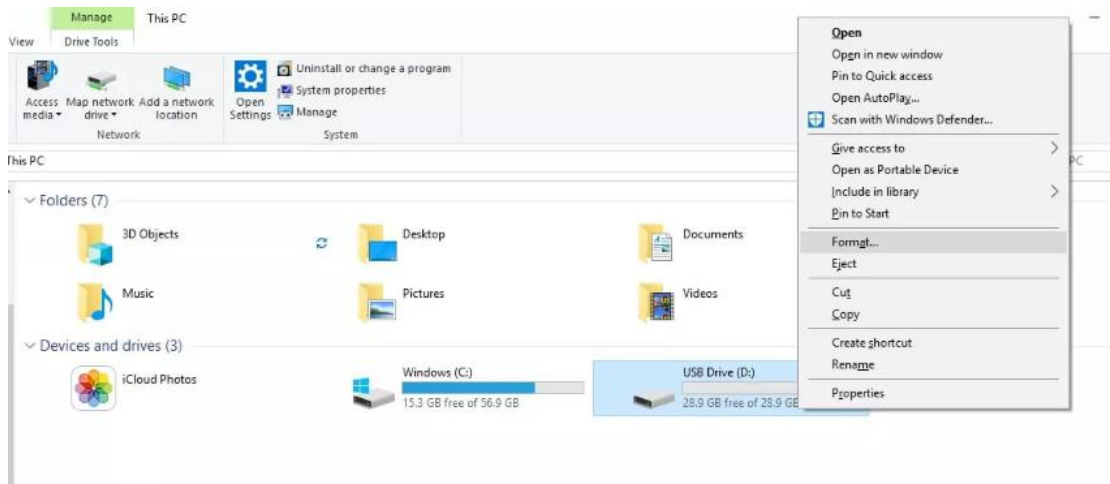
If you have just purchased a New SD Card to use with the Dash Cam, we recommend attempting to format it on your computer first even though in most of the time the new card is completely empty.

Some new SD Cards have files from the manufacturer and they also need to be formatted.

Follow the instructions below to format the SD card on your computer.

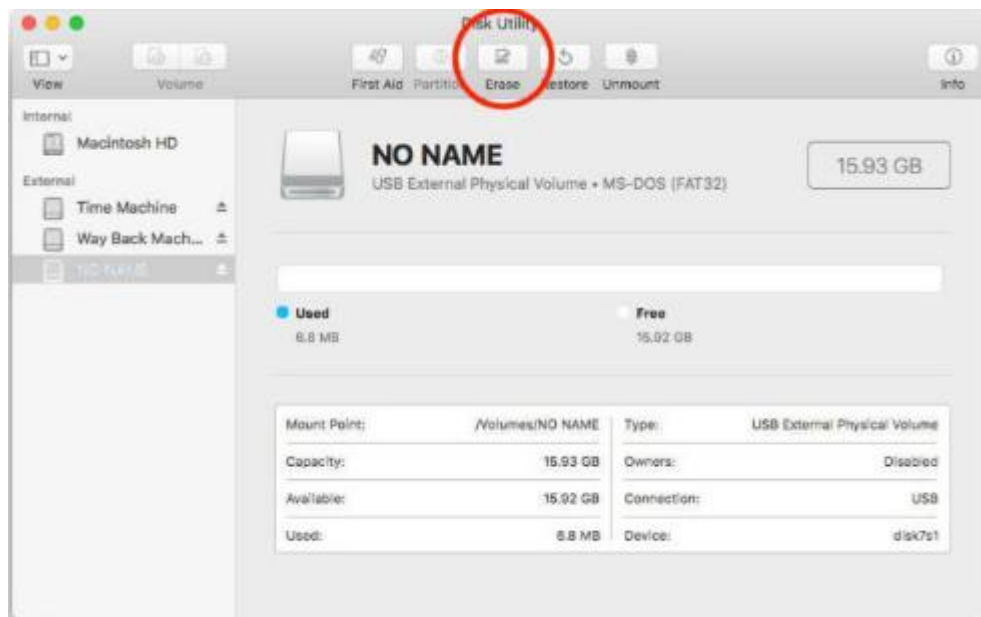
Windows:

1. Insert the SD card into your computer. You may need a card reader for this.
2. Open **File Explorer** and locate the drive letter for your SD card. Right-click the drive and select **Format**.
3. Set the **File System** to **FAT32**. Select Start to begin.
4. Select **OK** to begin formatting the card.



MAC:

1. Insert the SD card into your computer. You may need a card reader for this.
2. Open **Disk Utility**. To do this, click on the magnifying glass in the top-right corner of your computer screen. Type "disk utility" in the search box that opens, then click on the "Disk Utility" application that comes up.
3. Find the card in the left side of the window.
4. Click the **ERASE** tab in the middle of the window.



C. How to format the SD card on the Dash Cam

If this SD card is not used for the first time, you can simply format it on the Dash Cam for your convenience. Although formatting the SD card on your computer is recommended for better results.

Follow the instructions below.

1. Insert the microSD card into the Dash Cam. Please only insert the card into the slot **before turning on** the Dash Cam.
2. Turn on the Dash Cam and make sure it **is not recording** at the time.
3. Press the menu button twice to enter the **System Settings**.
4. Press the DOWN button to scroll down the menu until you see the

"Format" option.

5. Press the **POWER/OK** button, and press DOWN button and the **POWER/OK** button again to select **Confirm**.

2. Getting to Know the Camera Body

A. Interfaces

There are 4 interfaces:

- **Hard Reset Hole:** If your camera doesn't turn on while charging, you can insert the pin provided into the pinhole for about three seconds. This will hard reset the camera. If the camera can be turned on, you can reset it in the menu.
- **MicroSD Card Slot:** Slide the compatible card into the slot in the right direction (with the metal contact going into the slot first and away from you) until it clicks into place. If you feel the SD card cannot be inserted into the place, please use your fingernail to push the card in.
- **Mic: Microphone**
- **Micro USB Port:** This should be connected to the micro USB connector of the car charger cable provided in the package. The other end of the car charger cable is connected to the cigarette lighter.



B. Indicator Lights & Buttons

There are 3 indicator lights, from left to right:

- REC: The Rec light (orange light) flashes when the camera is recording.

- POWER: The Power light (red light) is on when the camera is connected to a power source.
- MIC: The Mic light (blue light) is on when the Audio is turned on.

There are 4 buttons, from left to right:

- POWER: also the OK button
- UP
- DOWN
- MENU: also for Mode Switch or Manual Lock



C. Icons on the Screen

Please note that the enabled functions shown on the screen below are just to show you the icon of each function. The settings of the dash cam below are not our recommended settings. We have set the recommended settings for this product as default.



In a counterclockwise direction, these icons are:

- ① Recording Mode (in contrast to Photo Mode)
- ② Loop Recording (the blue figure is 3 means the recording time period is 3 minutes)
- ③ Exposure
- ④ Motion Detection (this is shown when the function is turned on)
- ⑤ Audio (red slash means the audio is turned off)
- ⑥ Date & Time
- ⑦ Remaining battery
- ⑧ SD Card (this is shown when the card is inserted and read)
- ⑨ Video Resolution
- ⑩ Time of Recording
- ⑪ Parking Guard (this is shown when the function is turned on)
- ⑫ Wide Dynamic Range
- ⑬ Locked Video (this is shown if the video is locked)

3. Getting to Know the Operations

A. Camera Settings & System Settings

The menu of this product consists of **two menus**:

- **Camera Settings** (a.k.a. Function Settings)
- **System Settings**

1. About Camera Settings

Turn on the Dash Cam, press the **MENU Button** ONCE to enter the Camera Settings.



Below is how the Camera Settings Menu looks like. You are able to change the settings for the following functions by entering the camera menu:

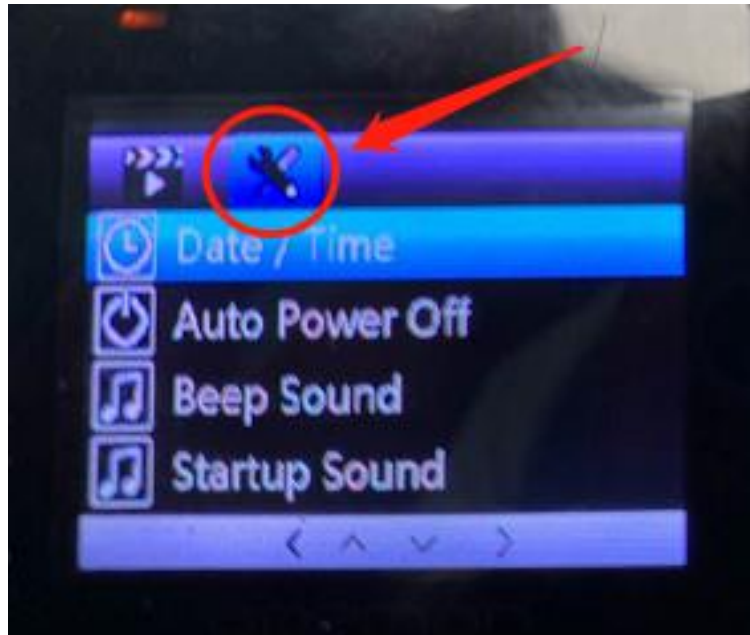


- Resolution: 1080P / 720P / VGA
- Loop Recording: OFF / 1 Minute / 3 Minutes / 5 Minutes
- WDR: OFF / ON
- Exposure: 0 / +1 / +2 / +3
- Motion Detection: OFF / ON
- Audio: OFF / ON
- Timestamp: OFF / ON
- Gravity Sensor (a.k.a. G-sensor): OFF / Low / Medium / High
- Parking Guard: OFF / ON

- Headlight Warning: OFF / ON

2. About System Settings

The System Settings is the menu to the right of the Camera Settings. As shown below.



- Date/Time: (Press OK/POWER Button to save changes)
- Auto Power Off: OFF / 1 Minute / 3 Minutes
- Beep Sound: OFF / ON
- Startup Sound: OFF / ON
- Language: 简体中文 / 繁体中文 / Deutsch / English / Français / Italiano / Espanol / 日本語
- Frequency: 50Hz / 60Hz

■ Screensaver: OFF / 1 Minute / 3 Minutes

Note: If the Screensaver is set to 1 or 3 Minutes, the screen will go black if there is no manual operation for 1 or 3 minutes. As long as the REC Light is flashing, the camera is still recording.

■ License Plate

This is where you input your license plate number.

■ Format

This is where you can format your microSD card on the Dash Cam.

■ Default Settings

This set of settings is our recommended setting. We strongly recommend that you use the default settings. The default/recommended settings are:

- Loop Recording: 3 Minutes
- Gravity Sensor: Low
- Parking Guard: OFF
- Motion Detection: OFF

The Parking Guard and Motion Detection functions should be turned off while driving, because they are used for parking monitoring.

■ Version

When you have firmware/software upgrade related queries, it would be helpful to provide us with this version number.

B. How to Start Recording

If the Dash Cam has been successfully installed in the car, it will automatically turn on and start recording when the engine starts (for most cars on the market).

If your Dash Cam does not automatically start and start recording when the engine starts (this usually depends on your car model),

please press the **POWER/OK** button to turn on the camera manually. Then press this button again to start recording.

When the Dash Cam is recording, REC Light in the upper left corner of the camera flashes, and a flashing Red Dot appears in the upper left corner of the screen. As shown below.



C. How to Stop Recording

When the Dash Cam is recording, simply press the the **POWER/OK** button to stop recording. For most cars (this also depends on the model), the camera will automatically stop recording and shut down when the engine goes off.

D. How to Switch to Photo Mode

The **MENU** button is also a **MODE SWITCH** button. Turning on the Dash Cam, then **long press** the **MENU** button to enter the **Photo Mode**. You can take photos from here by pressing the **POWER/OK** button.



Under the Photo mode, **short press** the **MENU** button to enter **its Camera Settings and System Settings** (which are different from the mentioned Camera Settings and System Settings under the Video Mode). The two settings menus are shown below.



Under the Photo mode, **long press** the **MENU** button to access to the photos that have been taken. Then you are able to **delete or manually lock** it by short pressing the MENU button from there.

E. How to Check and Reply Videos on Dash Cam

Turning on the Dash Cam, then **long press** the **MENU** button to enter the Photo Mode. Long Press it again to access to your video recordings. The operations of **Delete** or **Manually Lock** videos are the same as the Photo Mode. If you would like to delete a locked video, you must unlock it manually from there first.

Further questions are very welcome

Any advice would be appreciated

APEMAN official email: kt.support@apemans.com