

Fig. 1

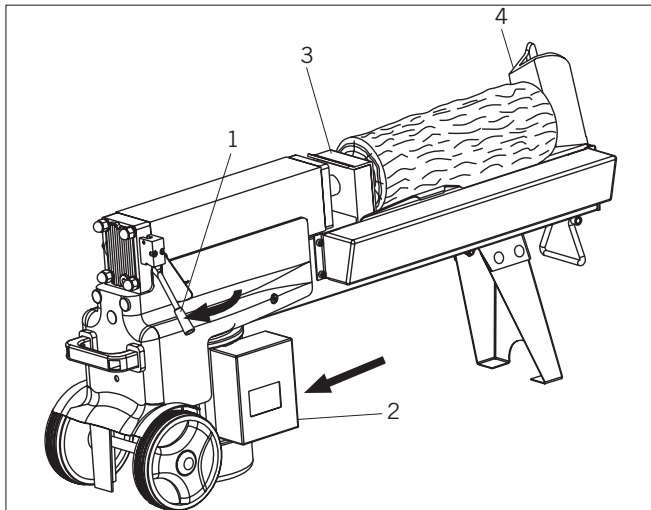


Fig. 2

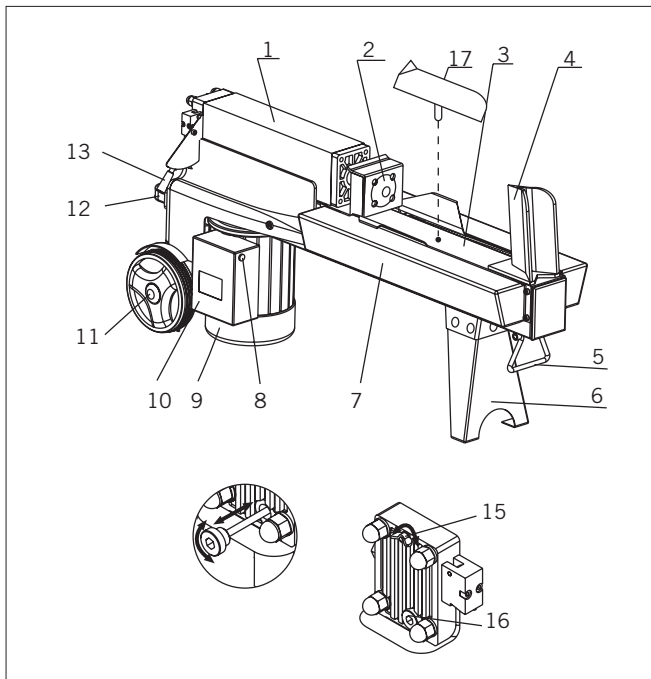


Fig. 4

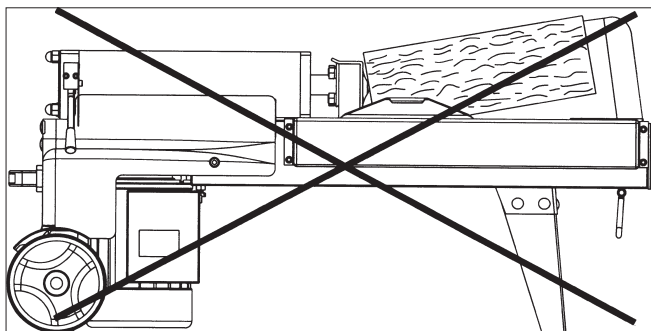


Fig. 5

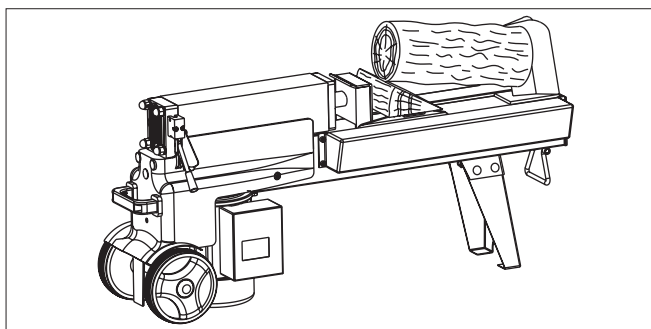


Fig. 3.1

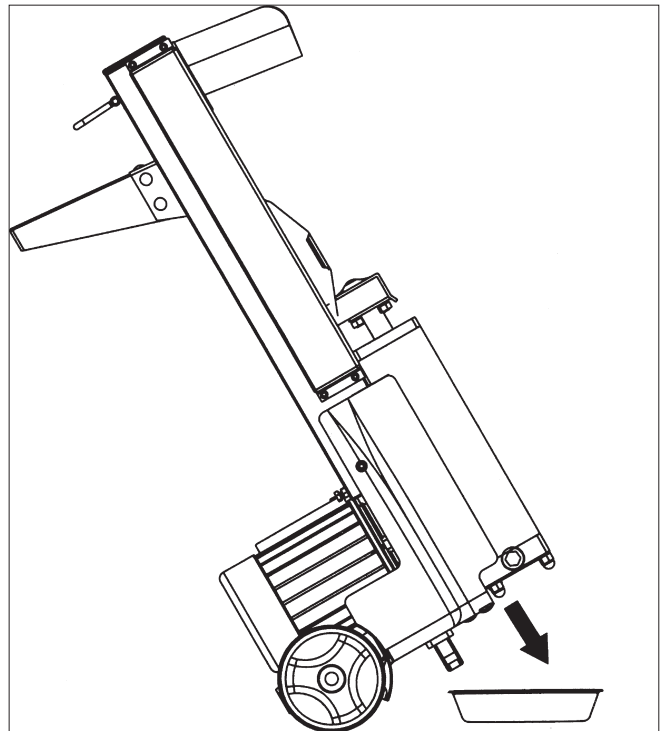


Fig. 3.2

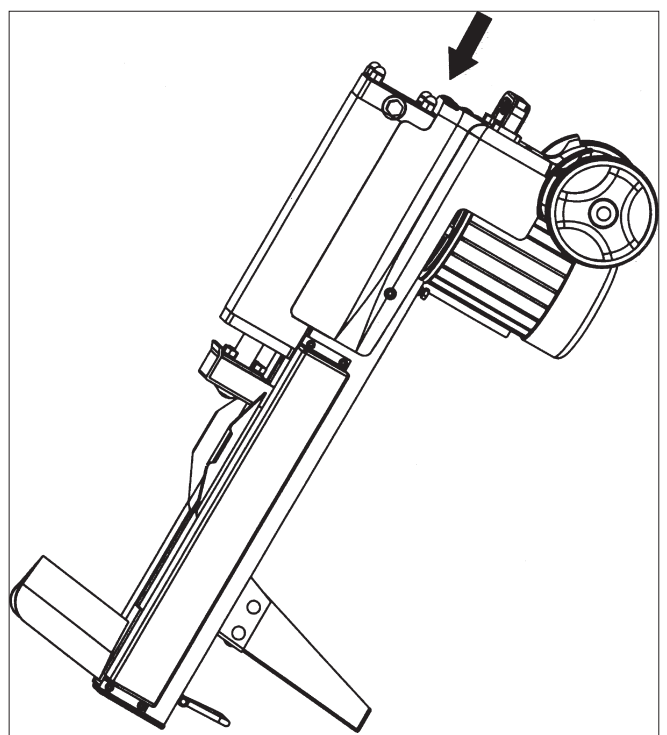
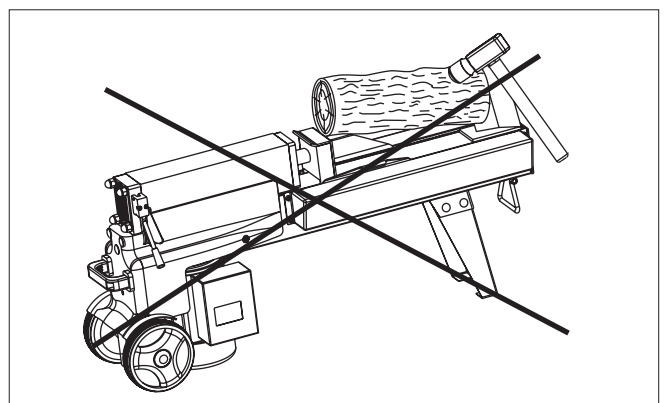


Fig. 6



Dear customer,

we wish you a pleasant and successful working experience with your new scheppach machine.

According to the applicable product liability law the manufacturer of this device is not liable for damages which arise on or in connection with this device in case of:

- improper handling,
- non-compliance with the instructions for use,
- repairs by third party, non authorized skilled workers,
- installation and replacement of non-original spare parts,
- improper use,
- failures of the electrical system due to the non-compliance with the electrical specifications and the VDE 0100, DIN 57113 / VDE 0113 regulations

Recommendations:

Read the entire text of the operating instructions prior to the assembly and operation of the device.

These operating instructions are intended to make it easier for you to get familiar with your device and utilize its intended possibilities of use.

The operating instructions contain important notes on how to work safely, properly and economically with your machine and how to avoid dangers, save repair costs, reduce downtime, and increase the reliability and working life of the machine.

In addition to the safety regulations contained herein, you must in any case comply with the applicable regulations of your country with respect to the operation of the machine. Put the operating instructions in a clear plastic folder to protect them from dirt and humidity, and store them near the machine. The instructions must be read and carefully observed by each operator prior to starting the work. Only persons who have been trained in the use of the machine and have been informed on the related dangers and risks are allowed to use the machine. The required minimum age must be met.

In addition to the safety notes contained in the present operating instructions and the special regulations of your country, the generally recognized technical rules for the operation of wood working machines must be observed.

Controls and features, Fig. 2

- | | |
|--------------------------|---------------------------------|
| 1 = Oil Tank | 10 = Pushbutton Box |
| 2 = Log Pusher | 11 = Transport Wheel |
| 3 = Work Table | 12 = Lift Handle |
| 4 = Wedge | 13 = Hydraulic Lever |
| 5 = Lift Handle | |
| 6 = Support Leg | 15 = Bleed Screw |
| 7 = Work Table Extension | 16 = Oil Drain Bolt w/ Dipstick |
| 8 = Switch | |
| 9 = Motor | 17 = Back-Run Stop |

General Notes

- When you unpack the device, check all parts for possible transport damages. In case of complaints the supplier is to be informed immediately. Complaints received at a later date will not be acknowledged.
- Check the delivery for completeness.
- Read the operating instructions to make yourself familiar with the device prior to using it.
- Only use original scheppach parts for accessories as well as for wearing and spare parts. Spare parts are available from your specialized dealer.
- Specify our part numbers as well as the type and year of

Ox t 500

Scope of Delivery

Hydraulic Log Splitter

Operation Manual

Technical Data

Dimensions LxWxH 48 3/4" x 24 3/8" x 38 3/8"

Wood ø min - max 2" - 10"

Wood Length min - max 7 7/8" - 20 1/2"

Distance - Log pusher- Splitting knife 7 7/8" / 5 7/8" / 3 15/16"

Return stroke stop 3 positions

No Volt release yes

Weight 110 lbs

Motor

Motor V/Hz 110/60

Current Amps 15

Splitting Power t* 4

Cylinder rise 12 9/16"

Cylinder speed (fast fwd.) 1 3/16"/sec

Cylinder speed (return) 3 1/8"/sec

Hydraulic fluid capacity 5/8 gal

Motor speed rpm 2800

Adjusting log pusher (2 holes) 2x 2"

Hydraulic pressure MPa 18

Subject to technical changes!

* The maximum achievable splitting power depends on the resistance of the material to be split and can, due to influencing variable, deflect to the hydraulic system.

construction of the device in your orders.

In these operating instructions we have marked the places that have to do with your safety with this sign: ⚠

⚠ General Safety Rules

- Observe all safety instructions and warnings attached to the machine.
- See to it that safety instructions and warnings attached to the machine are always complete and perfectly legible.
- The safety mechanism on the machine may not be removed or disengaged.
- Check all power supplies. Do not use defective lines.
- Before initial operation check to be sure the two-handed operation is properly functioning.
- Operating personnel must be at least 18 years of age. Trainees must be at least 16 years of age, but may only operate the machine under adult supervision.
- Always wear ear protection and work gloves when working.
- Caution when working: There is a danger to fingers and hands from the splitting tool.
- For heavy or cumbersome pieces, use the appropriate working aids for bracing.
- Cleaning, changing and setting of the machine may only be carried out when the motor is switched off. Pull the power supply plug.
- Connection, maintenance and repair work on the electrical installation may be carried out only by qualified personnel.

- All protection and safety devices must be replaced after completing repair and maintenance procedures.
- When leaving the work place, switch the motor off and pull the power supply plug.
- Never try to change the two-hand-functionality of your scheppach machine. Thus you increase the risk of accidents.
- The log splitter must always be used by one operator only.
- Nobody must be allowed to use the log splitter unless they have read the instruction manual and have been instructed in the regulations to follow for correct and safe use.
- Never wear loose, unbuttoned clothing which may become trapped in moving parts.
- Check that the logs to be split are free from nails or wire, which may fly up or damage the machine, the ends of the logs must be cut square, branches must be cut off flush with the trunk.
- Never try to split logs larger than those indicated in the technical specifications. This could be dangerous and may damage the machine.
- Break logs in the direction of the grain, do not place a log across the log splitter and leave it in that position for splitting; it may be dangerous and may seriously damage the machine.
- Never attempt to cut two logs at once, one may fly up and hit you.
- If the log moves away from the blade, retract the ram or the blade and turn the log through 90°.
- Do not attempt to load the log in the log splitter while the ram is in motion, you could get trapped and injured.
- Keep your hands well away from any splits and cracks which open in the log; these may close suddenly and crush or amputate your fingers.
- Never force the log splitter for more than 5 seconds keeping the cylinder under pressure in the attempt to split excessively hard wood. After this time interval, the oil under pressure is overheated and the machine could be damaged. It is thus better to stop and rotate the log to see whether it can be split in a different position. In any case, if you are not able to split the log, this means that its hardness exceeds the capacity of the machine and thus that log should be discarded so as not to damage the log splitter.
- Do not force the blade by pushing the log on the upper part, as this can cause the blade to break or damage the body of the machine. Always set the log on the guides.
- Never leave the machine unattended while it is running. If you leave the machine, even for a short time, remove the power supply or any possible cause of accidental start-up.
- The log splitter must never be used by an operator who is under the influence of alcohol, drugs, medicines, or who is tired. A clear mind is essential for safety.
- Never rig or tamper with the motor switch or operating lever. Operation must use both hands of one operator.
- Never request the assistance of another person to help you load, unload or remove a jammed log.
- Do not use machines with electric motor if inflammable fuels/vapours are present.
- Check that the electric circuit is adequately protected and that it corresponds with the power, voltage and frequency of the motor, check that there is a ground connection.
- Never open the switch box on the motor. Should this be

necessary, contact a qualified electrician.

- Make sure that the machine and the cable never come in contact with water.
- Treat the power cable with care, do not attempt to move the machine by pulling the cable, do not yank the cable to unplug it; keep the cable away from excessive heat, oil and sharp objects.
- Never leave the machine unattended with the power supply "on", also disconnect the power cable when not in use, when carrying out maintenance work, when changing attachment or moving the machine.

Proper Use

- The machine meets the currently valid EU machine directive.
- The hydraulic log splitter is designed only for wood in a horizontal position. Wood may only be split while horizontal and in the direction of the grain. Dimensions of wood to be split: maximal 20 1/2".
- Never split wood against the grain or while in an upright position.
- The manufacturer's safety, operation and maintenance instructions as well as the technical data given in the calibrations and dimensions must be adhered to.
- Relevant accident prevention regulations and other generally recognized safety and technical rules must also be adhered to.
- The machine may only be used, maintained or repaired by trained persons who are familiar with the machine and have been informed about the dangers. Unauthorized modifications of the machine exclude a liability of the manufacturer for damages resulting from the modifications.
- Any other use is considered to be not intended. The manufacturer excludes any liability for resulting damages, the risk is exclusively borne by the user.

Remaining hazards

The machine has been built using modern technology and in accordance with recognized safety rules.

Some hazards, however, may still remain.

- The splitting tool poses a danger of injury to fingers and hands by improper feeding or placement of wood.
- Danger of injury from thrown wood due to improper holding or feeding.
- The use of incorrect or damaged mains cables can lead to electrical injuries.
- Minimize remaining hazards by following the instructions in "Safety Rules", "Use only as authorized" and in the entire operating manual.

Transport

Transport fork lift/lifting carrier:

Upon dispatch, the machine is tightly mounted to a palette with 4 screws. Remove the screws with a fork wrench.

To remove the machine from the palette, two persons will be required.

The machine may be transported while held in a diagonal position. Use the hand grip and pull gently while the machine stands on its wheels.

Your scheppach machine can be stored or transported under ambient temperatures between -20° C and +60° C at a max. humidity of 80 %.

Setup

Prepare the workplace where the machine is to be placed. Ensure sufficient room to allow safe work without malfunctions.

The machine is designed to operate on a level surface and must be placed securely on firm, level ground.

Please make sure your scheppach machine is placed firmly on stable plain ground.

Assembly

For packaging reasons, the base (6) is to be installed by the customer.

Use the 5 saucer-head screws M8x12 that are included in the delivery.

Place the device horizontally on the floor, and put the Styropor pad of the packaging underneath the splitting wedge side.

Electrical connection

The installed electric motor is completely wired ready for operation.

The customer's connection to the power supply system, and any extension cables that may be used, must conform with local regulations.

Important remark:

The motor is automatically switched off in the event of an overload. The motor can be switched on again after a cooling down period that can vary.

Defective electrical connection cables

Electrical connection cables often suffer insulation damage.

Possible causes are:

- Pinch points when connection cables are run through window or door gaps.
- Kinks resulting from incorrect attachment or laying of the connection cable.
- Cuts resulting from running over the connecting cable.
- Insulation damage resulting from forcefully pulling out of the wall socket.
- Cracks through aging of insulation.

Such defective electrical connection cables must not be used as the insulation damage makes them **extremely hazardous**.

Check electrical connection cables regularly for damage. Make sure the cable is disconnected from the mains when checking.

Electrical connection cables must comply with the regulations applicable in your state / local jurisdiction.

Single-phase motor

- The mains voltage must coincide with the voltage specified on the motor's rating plate.
- Double insulated tools are equipped with a polarized plug (one blade is wider than the other.) This plug will fit in a polarized outlet only one way. If the plug does not fit fully in the outlet, reverse the plug. If it still does not fit, contact a qualified electrician to install a polarized outlet. Do not change the plug in any way.

Warning: Do not permit fingers to touch the terminals of plug when installing or removing from outlet.

- Double insulation eliminates the need for the three wire grounded power cord and grounded power sup-

ply system. Before plugging in the tool, be certain the outlet voltage supplied is within the voltage marked on the nameplate.

- The connection to the mains must be protected with a 16 A slow-acting fuse.

Extension cords

- The use of any extension cord will cause some drop in voltage and loss of power.
- Wires of the extension cord must be of sufficient size to carry the current and maintain adequate voltage.
- Use the table to determine the minimum wire size (A.W.G.) extension cord.
- If the extension cord is worn, cut, or damaged in any way, replace it immediately.

EXTENSION CORD LENGTH

Wire Size	A.W.G.
Up to 58 ft.	18
25 to 100 ft.	16
100 to 150 ft.	14

Note: Using extension cords over 150 ft. long is not recommended.

Only a qualified electrician is permitted to connect the machine and complete repairs on its electrical equipment. In the event of enquiries please specify the following data:

- Motor manufacturer
- Type of current of the motor
- Data recorded on the machine's rating plate
- Data recorded on the switch's rating plate

Operation

Before operating your scheppach machine, the bleed screw should be loosened by some rotations until air can go in and out of the oil tank smoothly. Failed to loosen the bleed screw will keep the sealed air in hydraulic system being compressed after being decompressed. Such continuous compression/decompression will blow out the seals of the hydraulic system and cause permanent damage to your scheppach machine.

Before moving your scheppach machine, make sure the bleed screw is tightened to avoid oil leaking from this point.

Only split plain cut log.

1. Place the log plain onto the work table (3).
2. Fix the log pusher in the required position according to the length of the log.
Position 1: Length up to 20 1/2",
Position 2: Length up to 18 1/2",
Position 3: Length up to 16 1/2".
3. Complying with regulations and for your safety, the hydraulic log splitter features two-handed control.
To start the splitting process, you must simultaneously press the lever (13) with your left hand and the start button (8) in the switchbox with your right hand.
Releasing one of the two control elements will immediately stop the splitting process, releasing both control elements will abort the splitting process.
The pressure plate (2) will then move back into its home position.

4. Very hard or knotty wood might lead to blocking, i.e. the log will not be split.

Important: Abort the process within 5 sec to avoid overloading.

In most cases the log can easily be split after rotating it or turning it over through 180°.

Therefore make sure that you insert the log with the knots on the side of the pressure plate. This way the splitting blade can penetrate the log more easily.

Wrongly placed log (Fig. 4)

Always set logs firmly on the log retaining plates and work table. Make sure logs will not twist, rock or slip while being split. Do not force the blade by splitting logs on the upper part. This will break the blade or damage the machine. Do not attempt to split 2 pieces of logs at the same time. One of them may fly up and hit you.

Jammed log (Fig. 5)

Do not try to knock the jammed log off. Knocking about will damage the machine or may launch the log and cause accident.

1. Release both controls.
2. After the log pusher moves back and completely stops at its starting position, insert a wedge wood under the jammed log as shown in fig. 5.
2. Start the log splitter to push the wedge wood under the jammed one.
2. Repeat above procedure with sharper slope wedge woods until the log is completely freed.

Back-run safety device

Use the back-run stop (17) for splitting shorter pieces of wood.

To install the stop move the pressure plate towards the splitting wedge.

Once the final position is achieved only hold down the hydraulic lever with the lever locking to avoid a return movement of the pressure plate.

Now you can insert the stop plate using the pin at the bearing surface of the tube.

Adjustment of the pressure plate

The pressure plate (2) can be set to 3 positions.

Lift the pin on the left of the pressure plate and pull out the pressure plate. Then, reinsert the pin.

Pos. Max. distance to the splitting wedge approximately 20 1/2" / min.: approximately 7 7/8"

Pos. B Max. distance to the splitting wedge approximately 18 1/2" / min.: approximately 5 7/8"

Pos. C Max. distance to the splitting wedge approximately 16 1/2" / min.: approximately 3 15/16"

The device must not be operated if the pressure plate is not properly secured.

Oil Change (Fig. 3.1, 3.2)

The hydraulic system is a closed system with oil tank, oil pump and control valve.

Check hydraulic connections and fittings regularly for air tightness. Tighten when necessary.

The oil tank has been filled with high quality oil (ISO viscosity level 20) at the factory.

Replacing hydraulic oil after 150 hours of use (Fig. 3)

1. Make sure all moving parts stop and the log splitter is unplugged.
2. Unscrew oil drain screw (16) to remove it.
3. Turn the log splitter on the support leg side as shown in fig. 3.1 over a 4 liter capacity container to drain the hydraulic oil off. Recycle carefully!
4. Turn your scheppach machine on the motor side as shown in fig. 3.2 to refill about 5/8 gal fresh oil.
5. Clean the surface of the dip stick on the oil drain bolt and put it back into the oil tank while keeping the log splitter vertically. Make sure the level of the refilled oil is just between 2 grooves around the dip stick.
6. Clean the oil drain bolt before threading it back. Make sure it is tightened to avoid leakage before placing the log splitter horizontally. Afterwards start splitting without actually splitting log several times.

Maintenance and Repair

Carry out refitting, setting and cleaning work only when the motor is switched off. Pull the power plug.

An experienced worker can carry out minor repairs on the machine alone.

Repair and maintenance work on the electrical system may only be carried out by a qualified electrician.

All protective and safety devices must be reattached immediately after completed repair and maintenance work.

We recommend:

- The splitting wedge is a wearing part that needs to be sharpened or replaced after wear.
- The combined gripping and controlling device must remain smooth running. Lubricate with a few dropsof oil when necessary.
- Keep splitting wedge drive clean of dirt, wood shavings, bark, etc.
- Lubricate slide rails with grease.

⚠ Troubleshooting

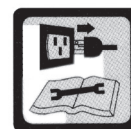
Problem	Possible Cause	Remedy
1. Motor stops starting	Overload protection device disengaged to protect the log splitter from being damaged	Contact a qualified Electrician.
2. Fails to split logs	a) Log is improperly positioned b) Size of log exceeds the capacity of the machine c) Wedge cutting edge is blunt d) Oil leaks	a) Refer to "operation" section to perfect log loading b) Reduce log size before operating c) Sharpen cutting edge d) Locate leak(s) and contact your dealer
3. Log pusher moves jerkily, taking unfamiliar noise or vibrating a lot	Lack of hydraulic oil and excessive air in the hydraulic system	Check oil level for possible refilling. Contact your dealer
4. Oil leaks around the cylinder ram or from other points	a) Air sealed in hydraulic system while operating b) Bleed screw is not tightened before moving the log splitter c) Oil drain bolt is not tight d) Hydraulic control valve assembly and/or seal(s) worn	a) Loosen bleed screw by some rotations before operating the log splitter b) Tighten bleed screw up before moving the log splitter c) Tighten the oil drain bolt d) Contact your dealer

Legend for the symbols attached to the machine

Wear working shoes and gloves!



Disconnect the mains plug prior to the repair, cleaning, and maintenance of the splitter!



Check the splitter for possible damages before you start working!



Do not reach into the machine without any protection!



Wear safety glasses!



Caution! Moving parts!



Read the operating instructions carefully!



Risk of injury!

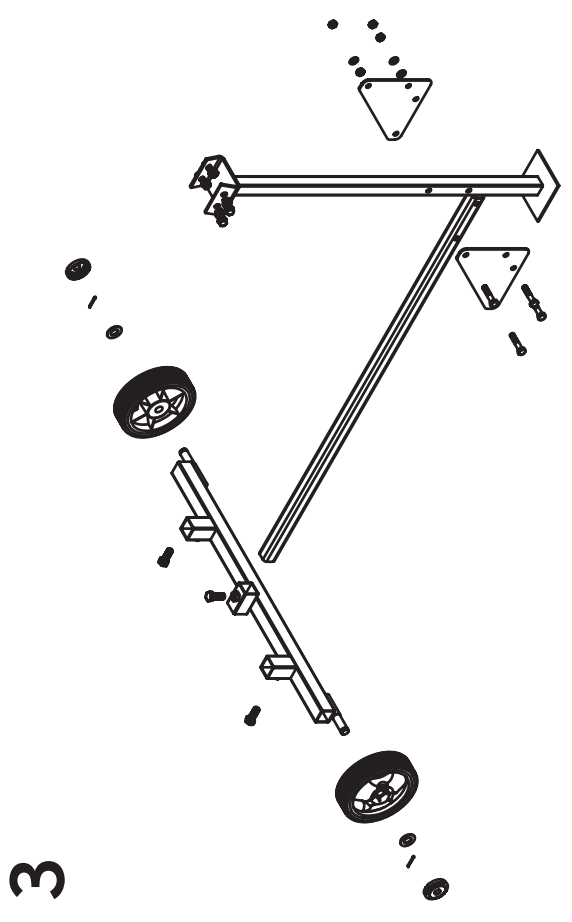
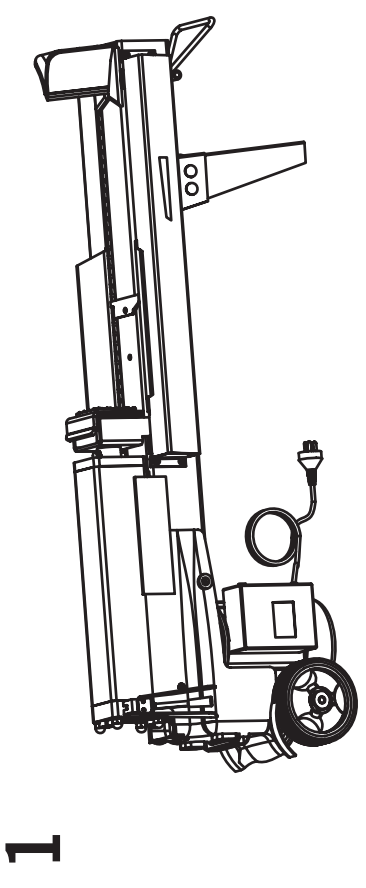
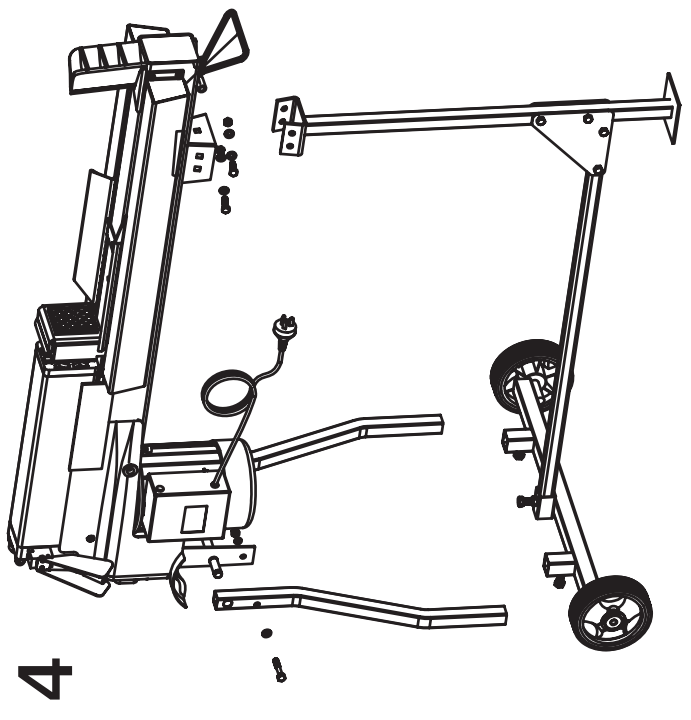
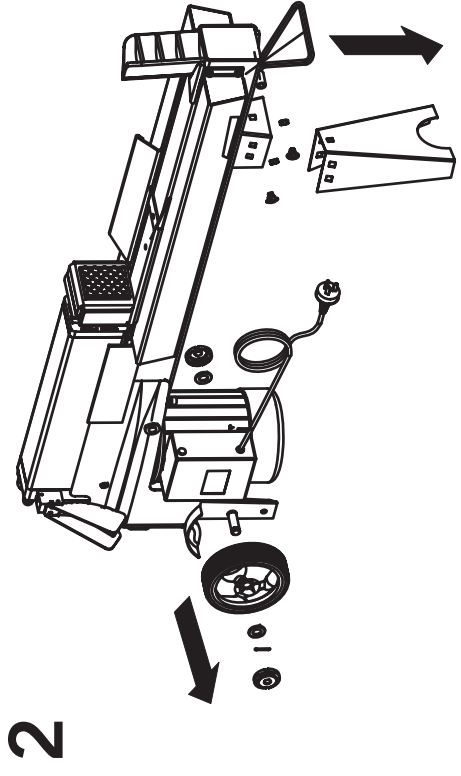


Please provide for the proper disposal of waste oil!

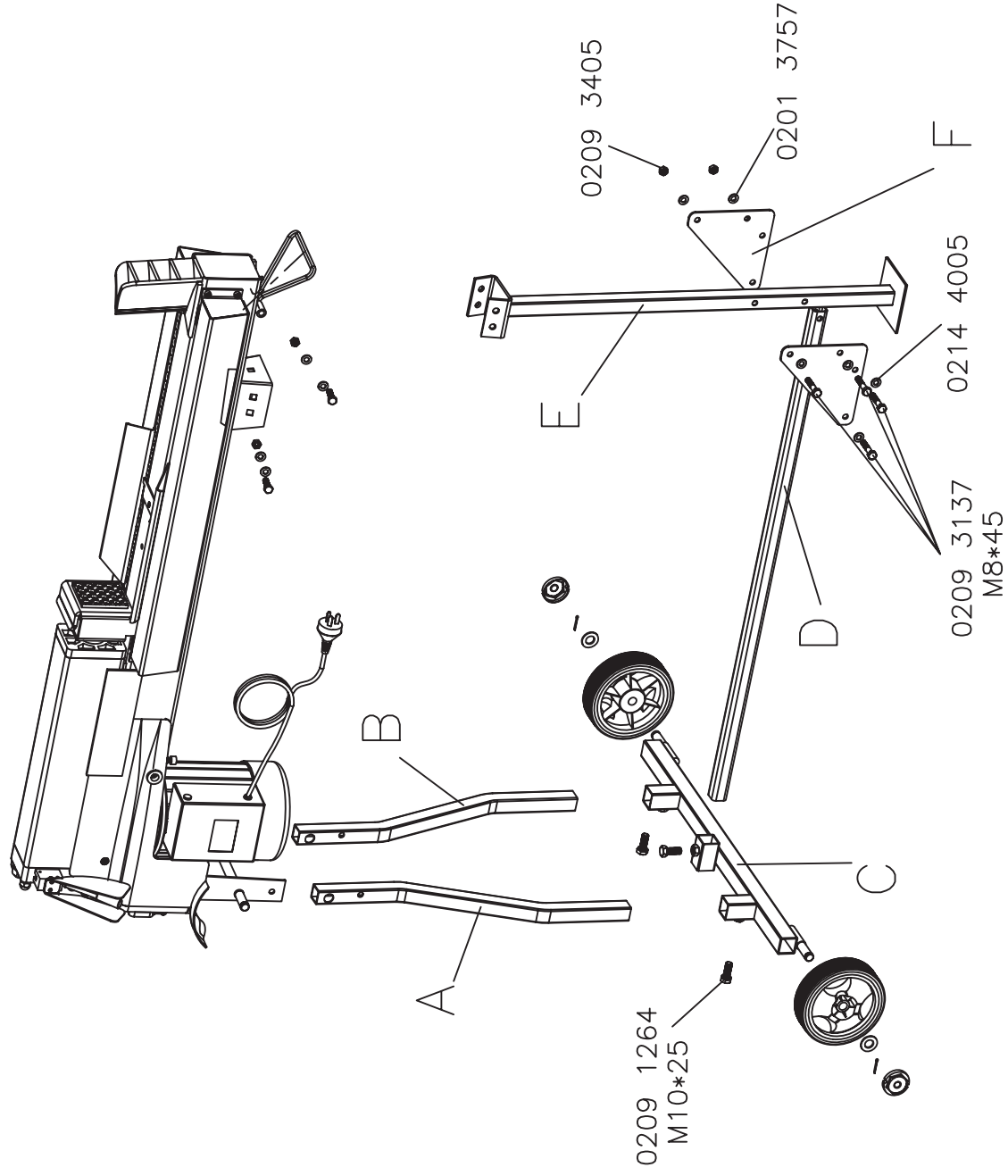
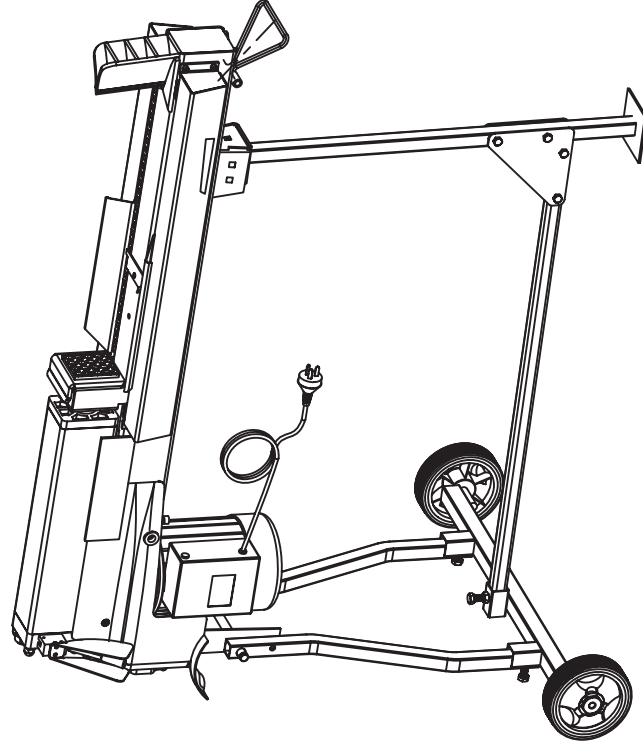


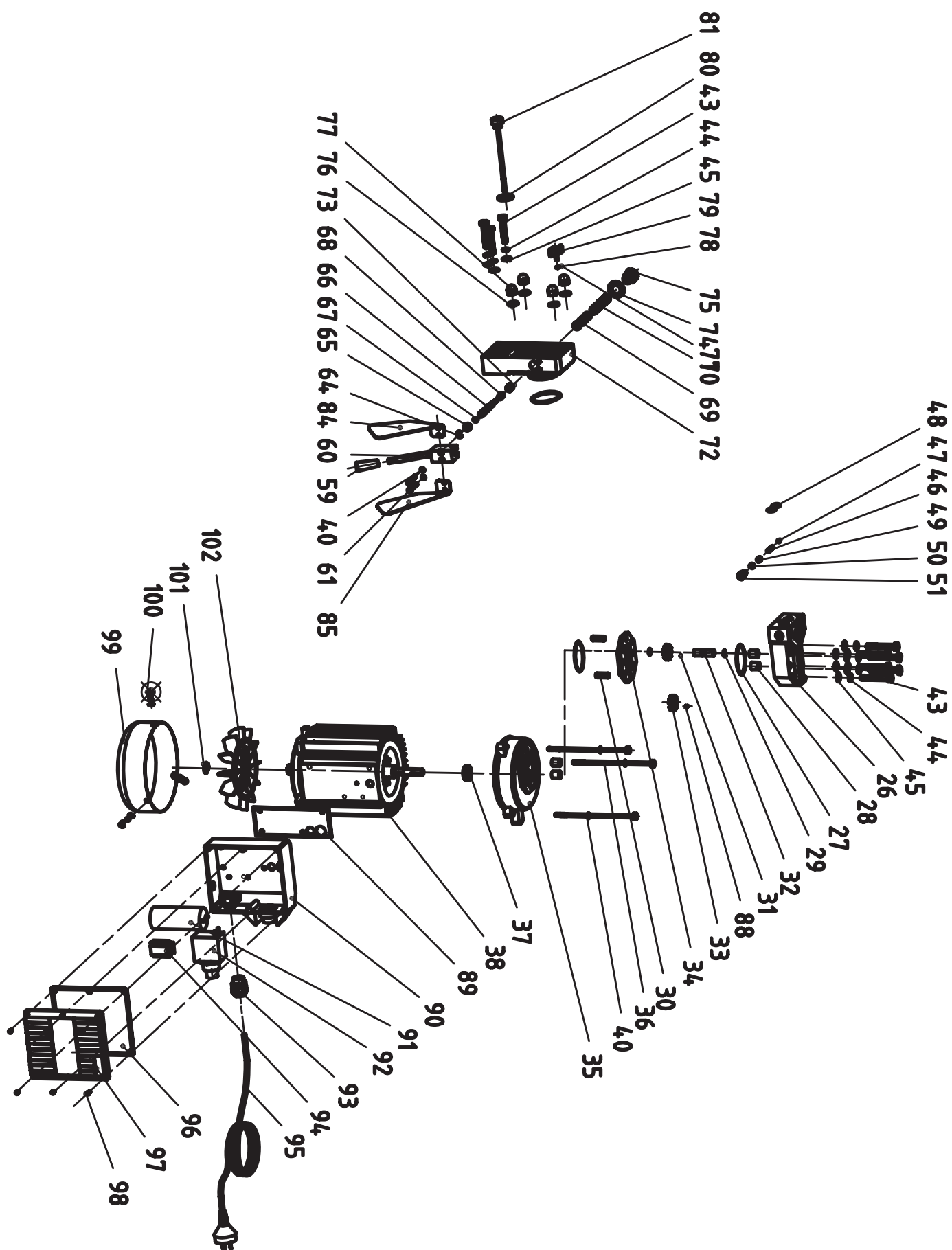
Keep your distance!

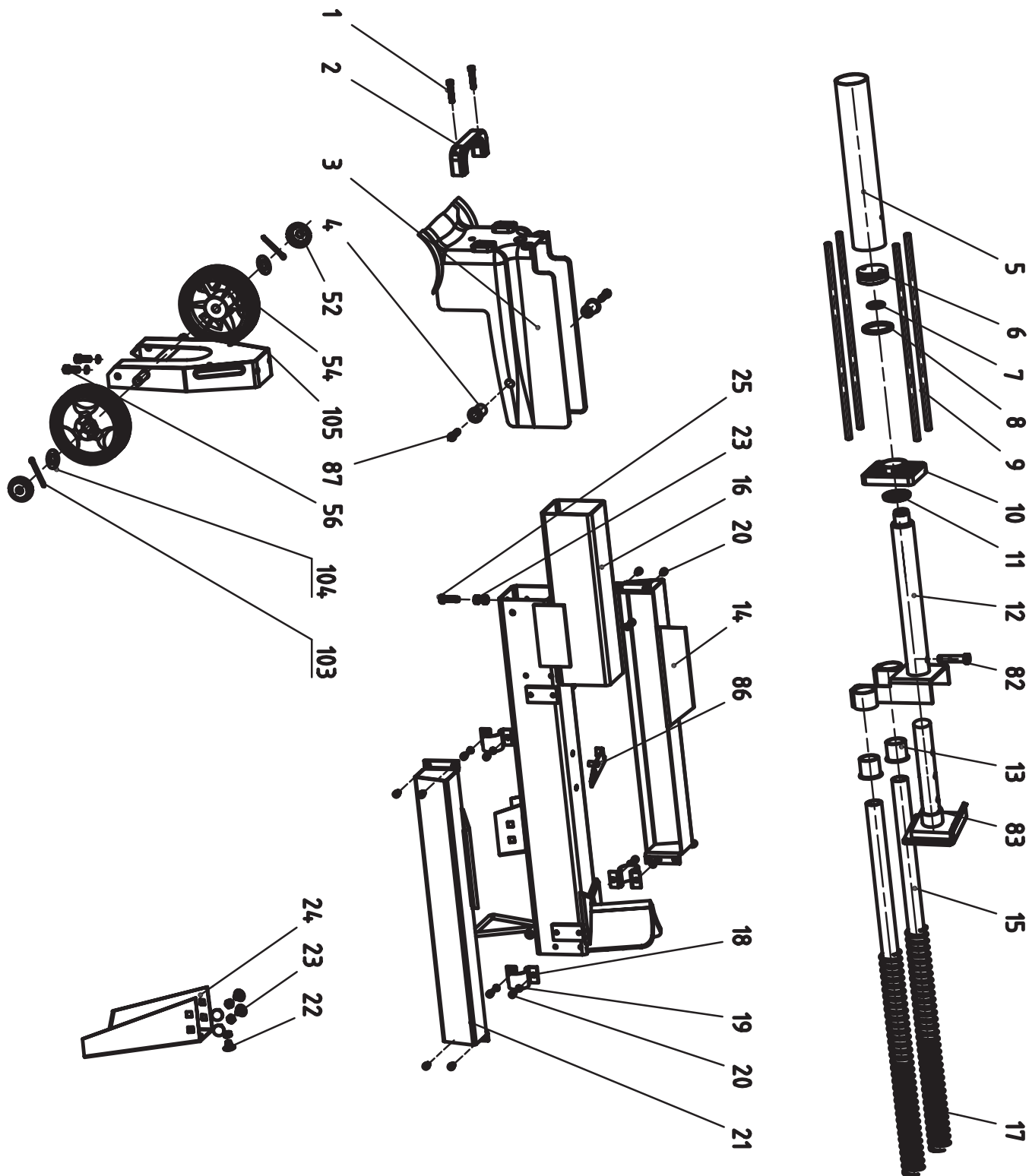




5







ox t500 available replacement parts			
Ref No.	Description	Part Number	Qty.
6 - 11	Set of Cylinder Seals	35559.00	1
26	Gearbox Assembly	35560.00	1
38	Motor	35561.00	1
54	Transport Wheel	35562.00	1
59-60	Switch Assembly	35563.00	1
91	Capacitor	35564.00	1
92	Circuit bReaker	35565.00	1
94	Switch	35566.00	1

CONTACT INFORMATION

If you are unable to solve a problem using this manual, please contact us for advice:

Exclusive USA Agent
Colovos Company
4444 West Ohio Street
Chicago, IL 60624
Tel.: (773) 533-4444

Repair

Repairs must be carried out only by qualified technical staff; and must follow the instructions and guidelines given in this manual. Should technical assistance be required, contact Colovos Company at (773) 533-4444.

Colovos Company is not liable for, nor do they guarantee against, damage or operating malfunctions resulting from alteration, abuse, and lack of maintenance or this product's use for other than its intended purpose. Failure to read and follow this operating manual is not covered.

For repairs only use

- Proper and suitable tools,
- Parts purchased from an authorized agent.

LIMITED WARRANTY

ONE-YEAR LIMITED WARRANTY: MODELS COVERED IN THIS MANUAL, ARE WARRANTED TO THE ORIGINAL USER AGAINST DEFECTS IN WORKMANSHIP OR MATERIALS UNDER NORMAL USE FOR ONE YEAR AFTER DATE OF PURCHASE. ANY PART WHICH IS DETERMINED TO BE DEFECTIVE IN MATERIAL OR WORKMANSHIP AND RETURNED SHIPPING COSTS PREPAID, WILL BE, AS THE EXCLUSIVE REMEDY, REPAIRED OR REPLACED AT OUR OPTION. FOR LIMITED WARRANTY CLAIM PROCEDURES, SEE "PROMPT DISPOSITION" BELOW. THIS LIMITED WARRANTY GIVES PURCHASERS SPECIFIC LEGAL RIGHTS WHICH VARY FROM JURISDICTION TO JURISDICTION.

LIMITATION OF LIABILITY. TO THE EXTENT ALLOWABLE UNDER APPLICABLE LAW, LIABILITY FOR CONSEQUENTIAL AND INCIDENTAL DAMAGES IS EXPRESSLY DISCLAIMED. LIABILITY IN ALL EVENTS IS LIMITED TO AND SHALL NOT EXCEED THE PURCHASE PRICE PAID.

WARRANTY DISCLAIMER. A DILIGENT EFFORT HAS BEEN MADE TO PROVIDE PRODUCT INFORMATION AND ILLUSTRATE THE PRODUCTS IN THIS LITERATURE ACCURATELY; HOWEVER, SUCH INFORMATION AND ILLUSTRATIONS ARE FOR THE SOLE PURPOSE OF IDENTIFICATION, AND DO NOT EXPRESS OR IMPLY A WARRANTY THAT THE PRODUCTS ARE MERCHANTABLE, OR FIT FOR A PARTICULAR PURPOSE, OR THAT THE PRODUCTS WILL NECESSARILY CONFORM TO THE ILLUSTRATIONS OR DESCRIPTIONS. EXCEPT AS PROVIDED BELOW, NO WARRANTY OR AFFIRMATION OF FACT, EXPRESSED OR IMPLIED, OTHER THAN AS STATED IN THE "LIMITED WARRANTY" ABOVE IS MADE OR AUTHORIZED.

Technical Advice and Recommendations, Disclaimer. Notwithstanding any past practice or dealings or trade custom, sales shall not include the furnishing of technical advice or assistance or system design. No obligations or liability on account of any unauthorized recommendations, opinions or advice as to the choice, installation or use of products shall be assumed for SCHEPPACH MODELS.

Product Suitability. Many jurisdictions have codes and regulations governing sales, construction, installation, and/or use of products for certain purposes, which may vary from those in neighboring areas. While attempts are made to assure that SCHEPPACH products comply with such codes, Colovos cannot guarantee FOR SCHEPPACH MODELS compliance, and cannot be responsible for how the product is installed or used. Before purchase and use of a product, review the product applications, and all applicable national and local codes and regulations, and be sure that the product, installation, and use will comply with them.

Certain aspects of disclaimers are not applicable to consumer products; e.g., (a) some jurisdictions do not allow the exclusion or limitation of incidental or consequential damages, so the above limitation or exclusion may not apply to you; (b) also, some jurisdictions do not allow a limitation on how long an implied warranty lasts, consequently the above limitation may not apply to you; and (c) by law, during the period of this Limited Warranty, any implied warranties of implied merchantability or fitness for a particular purpose applicable to consumer products purchased by consumers, may not be excluded or otherwise disclaimed.

Prompt Disposition. A good faith effort will be made for prompt correction or other adjustment with respect to any product which proves to be defective within limited warranty. For any product believed to be defective within limited warranty, first write or call dealer from whom the product was purchased. Dealer will give additional directions. If unable to resolve satisfactorily, write to the address below, giving dealer's name, address, date, and number of dealer's invoice, and describing the nature of the defect. Title and risk of loss pass to buyer on delivery to common carrier. If product was damaged in transit to you, file claim with carrier.

Contact Info: Scheppach US Agent Colovos Company @ 4444 West Ohio Street, Chicago, IL 60624, Tel.: 1-773-533-4444.