

Please read this manual before use

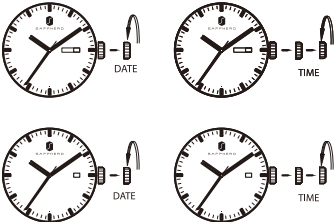


GUANGZHOU LUDI FEIHUA TRADE CO., LTD  
Email:Support@TheProWatches.com  
Website:www.TheProWatches.com

Two/Three Hands Quartz Watch

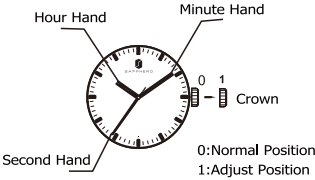


Single/Double Calendar Quartz Watch



USER MANUAL

Two/Three Hands Quartz Watch

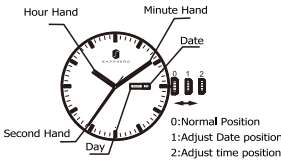


1. Description:  
0: Normal use position;  
1: Turn the crown to adjust time.
2. Time Setting:  
1) When the second hand is at 12 O'clock, pull out the crown; or just pull out the crown if there is no second hand;  
2) Turn the crown to adjust time, To make sure the time is accurate, first turn the minute hand 5 minutes ahead of the real time, then turn it anticlockwise back to the real time;  
3) Compare the adjusted time to the real time and wait until the second hand is at 12 O'clock in real time then push back the crown

USER MANUAL

Single/Double Calendar Quartz Watch

This watch has day and date display(Single calendar watch doesn't have day display)



1. Description:  
0: Normal use position;  
1: Turn the crown clockwise to adjust day;  
Turn the crown anti clockwise to adjust date;  
2: Turn the crown to adjust time.
2. Time Setting:  
1) When the second hand is at 12 O'clock, pull out the crown to 2 position;  
2) Turn the crown to adjust time, To make sure the time is accurate, first turn the minute hand 5 minutes ahead of the real time, then turn it anticlockwise back to the real time;

USER MANUAL

- 3) Compare the adjusted time to the real time and wait until the second hand is at 12 O'clock in real time then push back the crown.
- 4) When adjust time for over 24 hours, the day and date display will also change, which is why time setting is prior to day and date setting;
- 5) To set the right AM and PM, you can move the hour hand over 12 O'clock and see if the date display changes. If date doesn't change, means that is 12AM, otherwise it is 12PM.

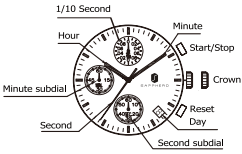
Day and Date Setting;

- 1) Pull out the crown to 1 position, turn the crown clockwise to adjust day and turn it anti clockwise to adjust date;
- 2) Push the crown back to 0 position;
- 3) Please do not adjust day and date display during 9pm-5am because they cannot automatically change the next day; if you need to reset, please change the time to other time period first, then set the day and date display and change back to the right time;
- 4) Please manually adjust date at the end of February and other months with 30 days;
- 5) The day and date display can be shown differently according to different movement, but the setting method is the same. For day only movement, please refer to above setting method.

USER MANUAL

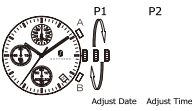
Function:

- Hour  
Minute  
Second  
Crown  
Minute subdial  
Start/Stop button  
Second subdial  
Day  
24 Hours



Before adjust time, make sure stop watch stops and the second subdial is at "0"

1. Pull out the crown to P1;  
2. Turn the crown until the day display moves to the day before;  
3. Pull the crown to P2 when second hand is at 12 O'clock; turn the crown and move the central hands until the day display is correct and then set the time to real time;  
(check if AM and PM is correct)  
\*If there is no day calendar, just pull the crown directly to P2 to adjust time;  
\*When crown is at P2, please do not press any buttons to avoid moving the second hand
4. Push the crown back to normal position  
\*Please do not adjust day and date display during 9pm-5am because they cannot automatically change the next day; if you need to reset, please change the time to other time period first, then set the day and date display and change back to the right time.



How To Adjust Second Hand

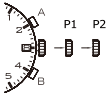
- \*The recorded seconds is in subdial, subdial is separated from the central hands display;  
\* The recording time limit is 60 minutes;  
\* The timing accuracy is 1/10 seconds; when 1/10 seconds hand started moving, the second subdial started moving at the first minute and will move back to "0" after each minute;  
Commonly used to record time (e.g., 100m race)

Follow below order: Press A to start - Press A to stop - Press B to reset



If the second hand isn't at "0", please follow below steps to adjust

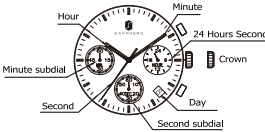
1. Pull out the crown to P2;  
2. Press A to adjust 1/10 second hand to "0";  
Press B to adjust second subdial to "0";  
\*the minute subdial moves according second subdial;  
\*press each button once to move one step; Hold the button to keep moving;  
\*24 Hours is in accordance with the central display;  
3. After setting, push the crown back to normal position.



USER MANUAL

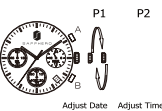
Function:

- Hour  
Minute  
Second  
Crown  
Minute subdial  
Start/Stop button  
Second subdial  
Day  
24 Hours



Before adjust time, make sure stop watch stops and the second subdial is at "0"

1. Pull out the crown to P1;  
2. Turn the crown until the day display moves to the day before;  
3. Pull the crown to P2 when second hand is at 12 O'clock; turn the crown and move the central hands until the day display is correct and then set the time to real time;  
(check if AM and PM is correct)  
\*If there is no day calendar, just pull the crown directly to P2 to adjust time;  
\*When crown is at P2, please do not press any buttons to avoid moving the second hand
4. Push the crown back to normal position  
\*Please do not adjust day and date display during 9pm-5am because they cannot automatically change the next day; if you need to reset, please change the time to other time period first, then set the day and date display and change back to the right time.



How To Adjust Second Hand

- \*The recorded seconds is in subdial, subdial is separated from the central hands display;  
\* The recording time limit is 60 minutes;

Follow below order: Press A to start - Press A to stop - Press B to reset



Operation Guarantee Certificate

Type: \_\_\_\_\_ Code: \_\_\_\_\_

Purchase date: \_\_\_\_\_

Dealer signature: \_\_\_\_\_

The company offers 12 months free maintenance after delivery with the exception of the following damage or losses caused by incorrect use, carelessness or accident; worn out if case surface, batteries, glass, and belt, etc. Please hand over the watch with the fully filled operation guarantee certificate to the dealer for our prompt maintenance for you. Note: this guarantee certificate will become valid only filled in fully and correctly by an SAPPHERO authorized dealer and sealed.

Maintenance record

Date	Maintenance code	Details